

AF-10 Polyclonal Antibody
Catalog # AP68322**Specification**

AF-10 Polyclonal Antibody - Product Information

Application	WB
Primary Accession	P55197
Reactivity	Human, Mouse
Host	Rabbit
Clonality	Polyclonal

AF-10 Polyclonal Antibody - Additional Information**Gene ID** 8028**Other Names**

MLLT10; AF10; Protein AF-10; ALL1-fused gene from chromosome 10 protein

Dilution

WB~~Western Blot: 1/500 - 1/2000. Immunohistochemistry: 1/100 - 1/300. Immunofluorescence: 1/200 - 1/1000. ELISA: 1/10000. Not yet tested in other applications.

Format

Liquid in PBS containing 50% glycerol, 0.5% BSA and 0.09% (W/V) sodium azide.

Storage Conditions

-20°C

AF-10 Polyclonal Antibody - Protein Information**Name** MLLT10 ([HGNC:16063](#))**Function**

Probably involved in transcriptional regulation. In vitro or as fusion protein with KMT2A/MLL1 has transactivation activity. Binds to cruciform DNA. In cells, binding to unmodified histone H3 regulates DOT1L functions including histone H3 'Lys-79' dimethylation (H3K79me2) and gene activation (PubMed:26439302).

Cellular Location

Nucleus.

Tissue Location

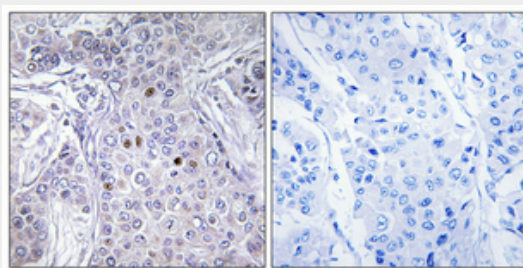
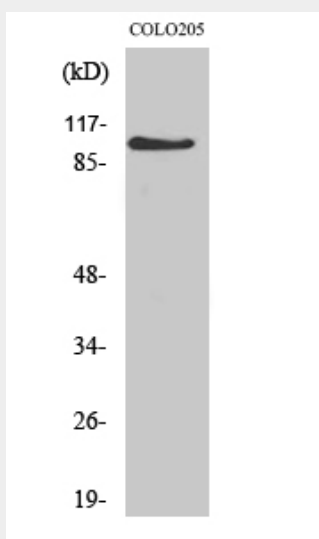
Expressed abundantly in testis.

AF-10 Polyclonal Antibody - Protocols

Provided below are standard protocols that you may find useful for product applications.

- [Western Blot](#)
- [Blocking Peptides](#)
- [Dot Blot](#)
- [Immunohistochemistry](#)
- [Immunofluorescence](#)
- [Immunoprecipitation](#)
- [Flow Cytometry](#)
- [Cell Culture](#)

AF-10 Polyclonal Antibody - Images



AF-10 Polyclonal Antibody - Background

Probably involved in transcriptional regulation. In vitro or as fusion protein with KMT2A/MLL1 has transactivation activity. Binds to cruciform DNA. In cells, binding to unmodified histone H3 regulates DOT1L functions including histone H3 'Lys-79' dimethylation (H3K79me2) and gene activation (PubMed:26439302).