

LAMB2 Antibody (C-term)
Purified Rabbit Polyclonal Antibody (Pab)
Catalog # AP6836b**Specification**

LAMB2 Antibody (C-term) - Product Information

Application	FC, IHC-P, WB,E
Primary Accession	P55268
Reactivity	Human
Host	Rabbit
Clonality	Polyclonal
Isotype	Rabbit IgG
Calculated MW	195981
Antigen Region	1579-1606

LAMB2 Antibody (C-term) - Additional Information**Gene ID** 3913**Other Names**

Laminin subunit beta-2, Laminin B1s chain, Laminin-11 subunit beta, Laminin-14 subunit beta, Laminin-15 subunit beta, Laminin-3 subunit beta, Laminin-4 subunit beta, Laminin-7 subunit beta, Laminin-9 subunit beta, S-laminin subunit beta, S-LAM beta, LAMB2, LAMS

Target/Specificity

This LAMB2 antibody is generated from rabbits immunized with a KLH conjugated synthetic peptide between 1579-1606 amino acids from the C-terminal region of human LAMB2.

Dilution

FC~~1:10~50

IHC-P~~1:50~100

WB~~1:1000

E~~Use at an assay dependent concentration.

Format

Purified polyclonal antibody supplied in PBS with 0.09% (W/V) sodium azide. This antibody is prepared by Saturated Ammonium Sulfate (SAS) precipitation followed by dialysis against PBS.

Storage

Maintain refrigerated at 2-8°C for up to 2 weeks. For long term storage store at -20°C in small aliquots to prevent freeze-thaw cycles.

Precautions

LAMB2 Antibody (C-term) is for research use only and not for use in diagnostic or therapeutic procedures.

LAMB2 Antibody (C-term) - Protein Information

Name LAMB2

Synonyms LAMS

Function Binding to cells via a high affinity receptor, laminin is thought to mediate the attachment, migration and organization of cells into tissues during embryonic development by interacting with other extracellular matrix components.

Cellular Location

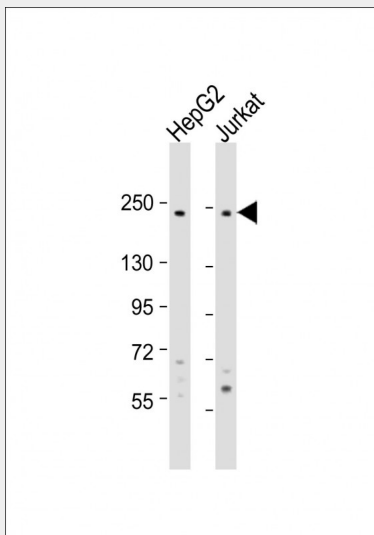
Secreted, extracellular space, extracellular matrix, basement membrane. Note=S-laminin is concentrated in the synaptic cleft of the neuromuscular junction

LAMB2 Antibody (C-term) - Protocols

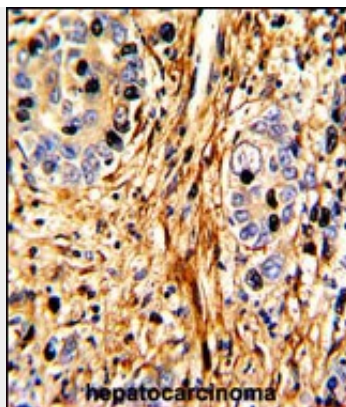
Provided below are standard protocols that you may find useful for product applications.

- [Western Blot](#)
- [Blocking Peptides](#)
- [Dot Blot](#)
- [Immunohistochemistry](#)
- [Immunofluorescence](#)
- [Immunoprecipitation](#)
- [Flow Cytometry](#)
- [Cell Culture](#)

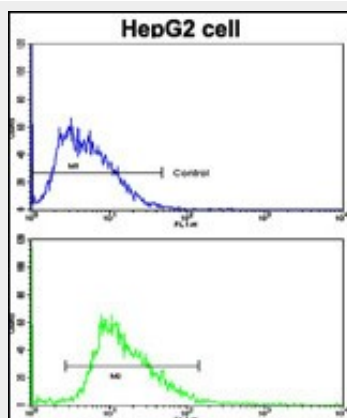
LAMB2 Antibody (C-term) - Images



All lanes : Anti-LAMB2 Antibody (C-term) at 1:1000 dilution Lane 1: HepG2 whole cell lysate Lane 2: Jurkat whole cell lysate Lysates/proteins at 20 µg per lane. Secondary Goat Anti-Rabbit IgG, (H+L), Peroxidase conjugated at 1/10000 dilution. Predicted band size : 196 kDa Blocking/Dilution buffer: 5% NFDM/TBST.



Formalin-fixed and paraffin-embedded human hepatocarcinoma with LAMB2 Antibody (C-term), which was peroxidase-conjugated to the secondary antibody, followed by DAB staining. This data demonstrates the use of this antibody for immunohistochemistry; clinical relevance has not been evaluated.



Flow cytometric analysis of HepG2 cells using LAMB2 Antibody (C-term)(bottom histogram) compared to a negative control cell (top histogram). FITC-conjugated goat-anti-rabbit secondary antibodies were used for the analysis.

LAMB2 Antibody (C-term) - Background

Binding to cells via a high affinity receptor, laminin is thought to mediate the attachment, migration and organization of cells into tissues during embryonic development by interacting with other extracellular matrix components.

LAMB2 Antibody (C-term) - References

So,H.C., et.al., Am. J. Med. Genet. B Neuropsychiatr. Genet. (2009)

LAMB2 Antibody (C-term) - Citations

- [Role of intestinal extracellular matrix-related signaling in porcine epidemic diarrhea virus infection](#)