

Angptl7 Polyclonal Antibody
Catalog # AP68412**Specification**

Angptl7 Polyclonal Antibody - Product Information

Application	WB, IHC-P
Primary Accession	O43827
Reactivity	Human, Mouse
Host	Rabbit
Clonality	Polyclonal

Angptl7 Polyclonal Antibody - Additional Information**Gene ID** 10218**Other Names**

ANGPTL7; CDT6; Angiopoietin-related protein 7; Angiopoietin-like factor; Angiopoietin-like protein 7; Cornea-derived transcript 6 protein

Dilution

WB~~Western Blot: 1/500 - 1/2000. Immunohistochemistry: 1/100 - 1/300. ELISA: 1/10000. Not yet tested in other applications.

IHC-P~~N/A

Format

Liquid in PBS containing 50% glycerol, 0.5% BSA and 0.09% (W/V) sodium azide.

Storage Conditions

-20°C

Angptl7 Polyclonal Antibody - Protein Information**Name** ANGPTL7**Synonyms** CDT6**Function**

Has a role in the formation and organization of the extracellular matrix. In the eye, it functions as a mediator of dexamethasone-induced matrix deposition in the trabecular meshwork, the tissue responsible for the outflow of the ocular aqueous humor and for the maintenance of intraocular pressure (PubMed:21199193). Is a negative regulator of angiogenesis in the cornea, and plays a major role in maintaining corneal avascularity and transparency (PubMed:25622036).

Cellular Location

Secreted.

Tissue Location

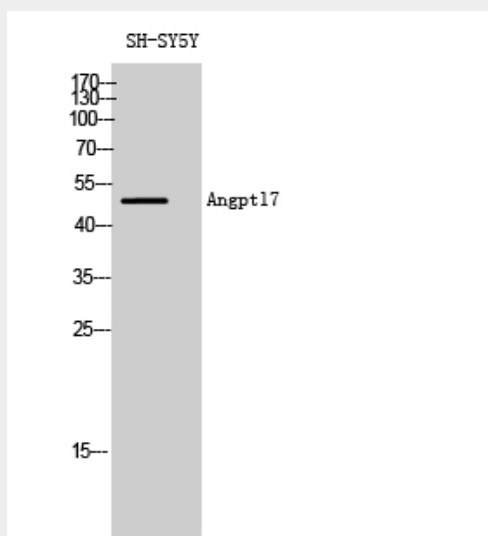
Highly expressed in the cornea (at protein level) (PubMed:11682471). Expression is restricted to the stromal layer (PubMed:11682471). Also detected at the junction between the corneal stromal layer and the conjunctiva. Not detected in the sclera (PubMed:11682471).

Angptl7 Polyclonal Antibody - Protocols

Provided below are standard protocols that you may find useful for product applications.

- [Western Blot](#)
- [Blocking Peptides](#)
- [Dot Blot](#)
- [Immunohistochemistry](#)
- [Immunofluorescence](#)
- [Immunoprecipitation](#)
- [Flow Cytometry](#)
- [Cell Culture](#)

Angptl7 Polyclonal Antibody - Images



Western Blot analysis of SH-SY5Y cells using Angptl7 Polyclonal Antibody diluted at 1:2000