

ANKT Polyclonal Antibody
Catalog # AP68416**Specification**

ANKT Polyclonal Antibody - Product Information

Application	WB
Primary Accession	Q9BXS6
Reactivity	Human
Host	Rabbit
Clonality	Polyclonal

ANKT Polyclonal Antibody - Additional Information**Gene ID** 51203**Other Names**

NUSAP1; ANKT; BM-037; Nucleolar and spindle-associated protein 1; NuSAP

Dilution

WB~~Western Blot: 1/500 - 1/2000. ELISA: 1/20000. Not yet tested in other applications.

Format

Liquid in PBS containing 50% glycerol, 0.5% BSA and 0.09% (W/V) sodium azide.

Storage Conditions

-20°C

ANKT Polyclonal Antibody - Protein Information**Name** NUSAP1**Synonyms** ANKT**Function**

Microtubule-associated protein with the capacity to bundle and stabilize microtubules (By similarity). May associate with chromosomes and promote the organization of mitotic spindle microtubules around them.

Cellular Location

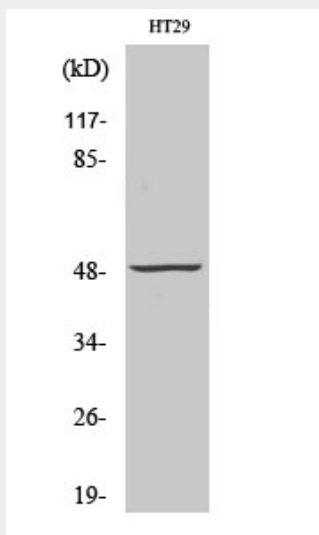
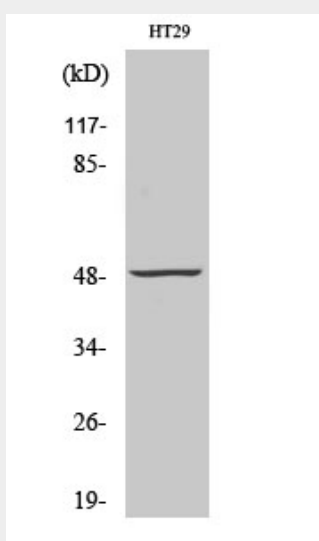
Cytoplasm. Nucleus, nucleolus. Cytoplasm, cytoskeleton, spindle Chromosome. Note=Found in the cytoplasm and nucleolus during interphase and redistributes to the mitotic spindle in prometaphase (By similarity). Localizes to the mitotic spindle during anaphase and telophase then disappears from around the chromosomes during cytokinesis (By similarity). Localizes to multiple distinct regions of chromosomes throughout mitosis. {ECO:0000250, ECO:0000269|PubMed:17276916, ECO:0000269|PubMed:17618083}

ANKT Polyclonal Antibody - Protocols

Provided below are standard protocols that you may find useful for product applications.

- [Western Blot](#)
- [Blocking Peptides](#)
- [Dot Blot](#)
- [Immunohistochemistry](#)
- [Immunofluorescence](#)
- [Immunoprecipitation](#)
- [Flow Cytometry](#)
- [Cell Culture](#)

ANKT Polyclonal Antibody - Images



ANKT Polyclonal Antibody - Background

Microtubule-associated protein with the capacity to bundle and stabilize microtubules (By

similarity). May associate with chromosomes and promote the organization of mitotic spindle microtubules around them.