

**SNRPD2 Antibody (N-term)**  
**Purified Rabbit Polyclonal Antibody (Pab)**  
**Catalog # AP6841a****Specification**

---

**SNRPD2 Antibody (N-term) - Product Information**

Application	WB, IHC-P, FC,E
Primary Accession	<a href="#">P62316</a>
Other Accession	<a href="#">Q29329</a> , <a href="#">P62317</a> , <a href="#">Q3SZF8</a>
Reactivity	Human
Predicted	Bovine, Mouse, Pig
Host	Rabbit
Clonality	Polyclonal
Isotype	Rabbit IgG
Calculated MW	13527
Antigen Region	1-30

**SNRPD2 Antibody (N-term) - Additional Information****Gene ID** 6633**Other Names**

Small nuclear ribonucleoprotein Sm D2, Sm-D2, snRNP core protein D2, SNRPD2, SNRPD1

**Target/Specificity**

This SNRPD2 antibody is generated from rabbits immunized with a KLH conjugated synthetic peptide between 1-30 amino acids from the N-terminal region of human SNRPD2.

**Dilution**WB~~1:1000  
IHC-P~~1:50~100  
FC~~1:10~50**Format**

Purified polyclonal antibody supplied in PBS with 0.09% (W/V) sodium azide. This antibody is prepared by Saturated Ammonium Sulfate (SAS) precipitation followed by dialysis against PBS.

**Storage**

Maintain refrigerated at 2-8°C for up to 2 weeks. For long term storage store at -20°C in small aliquots to prevent freeze-thaw cycles.

**Precautions**

SNRPD2 Antibody (N-term) is for research use only and not for use in diagnostic or therapeutic procedures.

**SNRPD2 Antibody (N-term) - Protein Information****Name** SNRPD2

## Synonyms SNRPD1

**Function** Plays a role in pre-mRNA splicing as a core component of the spliceosomal U1, U2, U4 and U5 small nuclear ribonucleoproteins (snRNPs), the building blocks of the spliceosome (PubMed:[11991638](#), PubMed:[18984161](#), PubMed:[19325628](#), PubMed:[23333303](#), PubMed:[25555158](#), PubMed:[26912367](#), PubMed:[28076346](#), PubMed:[28502770](#), PubMed:[28781166](#), PubMed:[32494006](#)). Component of both the pre-catalytic spliceosome B complex and activated spliceosome C complexes (PubMed:[11991638](#), PubMed:[28076346](#), PubMed:[28502770](#), PubMed:[28781166](#)). As a component of the minor spliceosome, involved in the splicing of U12-type introns in pre-mRNAs (PubMed:[15146077](#)).

## Cellular Location

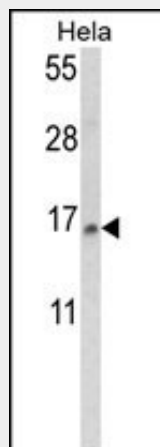
Cytoplasm, cytosol. Nucleus. Note=SMN-mediated assembly into core snRNPs occurs in the cytosol before SMN-mediated transport to the nucleus to be included in spliceosomes.

## SNRPD2 Antibody (N-term) - Protocols

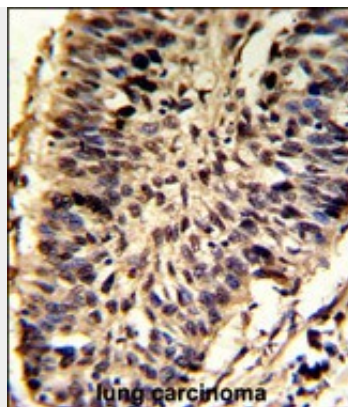
Provided below are standard protocols that you may find useful for product applications.

- [Western Blot](#)
- [Blocking Peptides](#)
- [Dot Blot](#)
- [Immunohistochemistry](#)
- [Immunofluorescence](#)
- [Immunoprecipitation](#)
- [Flow Cytometry](#)
- [Cell Culture](#)

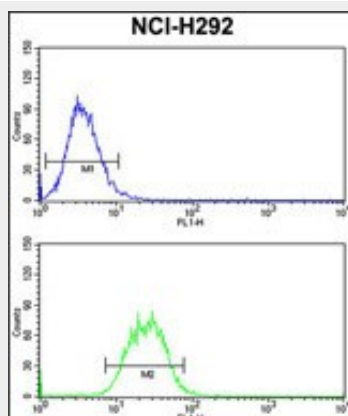
## SNRPD2 Antibody (N-term) - Images



Western blot analysis of SNRPD2 Antibody (N-term) (Cat. #AP6841a) in HeLa cell line lysates (35ug/lane). SNRPD2 (arrow) was detected using the purified Pab.



Formalin-fixed and paraffin-embedded human lung carcinoma reacted with SNRPD2 Antibody (N-term), which was peroxidase-conjugated to the secondary antibody, followed by DAB staining. This data demonstrates the use of this antibody for immunohistochemistry; clinical relevance has not been evaluated.



SNRPD2 Antibody (N-term) (Cat. #AP6841a) flow cytometry analysis of NCI-H292 cells (bottom histogram) compared to a negative control cell (top histogram). FITC-conjugated goat-anti-rabbit secondary antibodies were used for the analysis.

### **SNRPD2 Antibody (N-term) - Background**

SNRPD2 belongs to the small nuclear ribonucleoprotein core protein family. It is required for pre-mRNA splicing and small nuclear ribonucleoprotein biogenesis.

### **SNRPD2 Antibody (N-term) - References**

Stelzl, U., et al., Cell 122 (6), 957-968 (2005)