

APS Polyclonal Antibody
Catalog # AP68468**Specification**

APS Polyclonal Antibody - Product Information

| | |
|-------------------|------------------------|
| Application | WB |
| Primary Accession | O14492 |
| Reactivity | Human, Mouse, Rat |
| Host | Rabbit |
| Clonality | Polyclonal |

APS Polyclonal Antibody - Additional Information**Gene ID** 10603**Other Names**

SH2B2; APS; SH2B adapter protein 2; Adapter protein with pleckstrin homology and Src homology 2 domains; SH2 and PH domain-containing adapter protein APS

Dilution

WB~~Western Blot: 1/500 - 1/2000. ELISA: 1/20000. Not yet tested in other applications.

Format

Liquid in PBS containing 50% glycerol, 0.5% BSA and 0.09% (W/V) sodium azide.

Storage Conditions

-20°C

APS Polyclonal Antibody - Protein Information**Name** SH2B2**Synonyms** APS**Function**

Adapter protein for several members of the tyrosine kinase receptor family. Involved in multiple signaling pathways. May be involved in coupling from immunoreceptor to Ras signaling. Acts as a negative regulator of cytokine signaling in collaboration with CBL. Binds to EPOR and suppresses EPO-induced STAT5 activation, possibly through a masking effect on STAT5 docking sites in EPOR. Suppresses PDGF-induced mitogenesis. May induce cytoskeletal reorganization via interaction with VAV3.

Cellular Location

Cytoplasm. Cell membrane. Note=Cytoplasmic before PDGF stimulation. After PDGF stimulation, localized at the cell membrane and peripheral region

Tissue Location

Expressed in spleen, prostate, testis, uterus, small intestine and skeletal muscle. Among

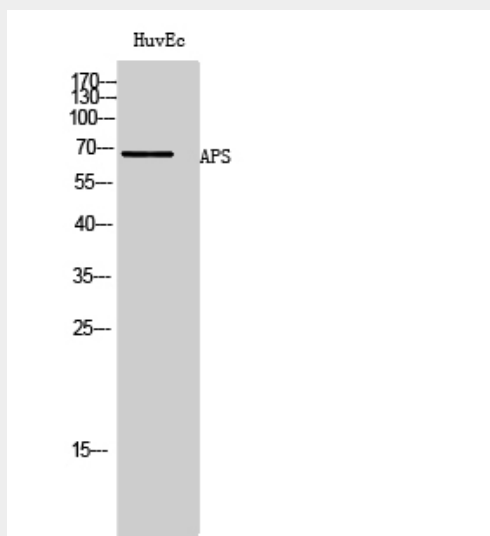
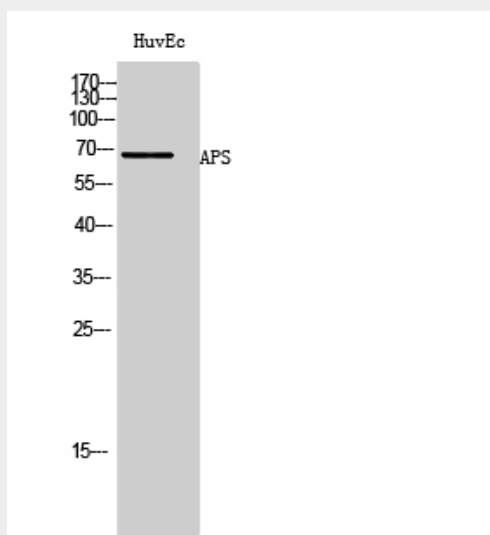
hematopoietic cell lines, expressed exclusively in B-cells. Not expressed in most tumor cell lines.

APS Polyclonal Antibody - Protocols

Provided below are standard protocols that you may find useful for product applications.

- [Western Blot](#)
- [Blocking Peptides](#)
- [Dot Blot](#)
- [Immunohistochemistry](#)
- [Immunofluorescence](#)
- [Immunoprecipitation](#)
- [Flow Cytometry](#)
- [Cell Culture](#)

APS Polyclonal Antibody - Images



APS Polyclonal Antibody - Background

Adapter protein for several members of the tyrosine kinase receptor family. Involved in multiple signaling pathways. May be involved in coupling from immunoreceptor to Ras signaling. Acts as a negative regulator of cytokine signaling in collaboration with CBL. Binds to EPOR and suppresses EPO-induced STAT5 activation, possibly through a masking effect on STAT5 docking sites in EPOR. Suppresses PDGF-induced mitogenesis. May induce cytoskeletal reorganization via interaction with VAV3.