

ENTH Antibody (Center)
Purified Rabbit Polyclonal Antibody (Pab)
Catalog # AP6850c**Specification**

ENTH Antibody (Center) - Product Information

Application	IHC-P, WB,E
Primary Accession	Q14677
Other Accession	Q99KN9 , A7Z035
Reactivity	Human
Predicted	Bovine, Mouse
Host	Rabbit
Clonality	Polyclonal
Isotype	Rabbit IgG
Calculated MW	68259
Antigen Region	222-249

ENTH Antibody (Center) - Additional Information**Gene ID** 9685**Other Names**

Clathrin interactor 1, Clathrin-interacting protein localized in the trans-Golgi region, Clint, Enthoprotin, Epsin-4, Epsin-related protein, EpsinR, CLINT1, ENTH, EPN4, EPNR, KIAA0171

Target/Specificity

This ENTH antibody is generated from rabbits immunized with a KLH conjugated synthetic peptide between 222-249 amino acids from the Central region of human ENTH.

Dilution

IHC-P~~1:50~100

WB~~1:1000

E~~Use at an assay dependent concentration.

Format

Purified polyclonal antibody supplied in PBS with 0.09% (W/V) sodium azide. This antibody is prepared by Saturated Ammonium Sulfate (SAS) precipitation followed by dialysis against PBS.

Storage

Maintain refrigerated at 2-8°C for up to 2 weeks. For long term storage store at -20°C in small aliquots to prevent freeze-thaw cycles.

Precautions

ENTH Antibody (Center) is for research use only and not for use in diagnostic or therapeutic procedures.

ENTH Antibody (Center) - Protein Information

Name CLINT1

Synonyms ENTH, EPN4, EPNR, KIAA0171

Function Binds to membranes enriched in phosphatidylinositol 4,5- bisphosphate (PtdIns(4,5)P₂). May have a role in transport via clathrin-coated vesicles from the trans-Golgi network to endosomes. Stimulates clathrin assembly.

Cellular Location

Cytoplasm. Cytoplasm, perinuclear region. Membrane; Peripheral membrane protein. Cytoplasmic vesicle, clathrin- coated vesicle. Note=Found throughout the cell, with the exception of the cell surface. Concentrated in the perinuclear region and associated with clathrin-coated vesicles close to the trans-Golgi network

Tissue Location

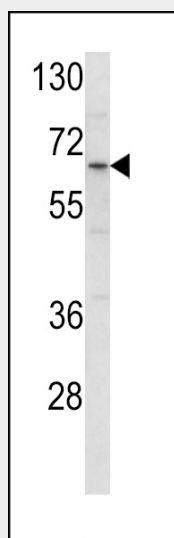
Ubiquitously expressed at low to intermediate levels.

ENTH Antibody (Center) - Protocols

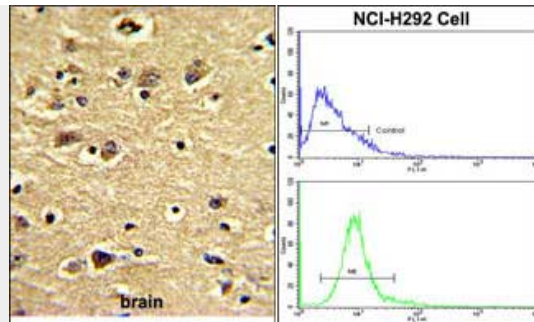
Provided below are standard protocols that you may find useful for product applications.

- [Western Blot](#)
- [Blocking Peptides](#)
- [Dot Blot](#)
- [Immunohistochemistry](#)
- [Immunofluorescence](#)
- [Immunoprecipitation](#)
- [Flow Cytometry](#)
- [Cell Culture](#)

ENTH Antibody (Center) - Images



Western blot analysis of ENTH Antibody (Center) (Cat. #AP6850c) in HL-60 cell line lysates (35ug/lane). ENTH (arrow) was detected using the purified Pab.



(LEFT) Formalin-fixed and paraffin-embedded human brain with ENTH Antibody (Center), which was peroxidase-conjugated to the secondary antibody, followed by DAB staining. This data demonstrates the use of this antibody for immunohistochemistry; clinical relevance has not been evaluated. (RIGHT) Flow cytometric analysis of NCI-H292 cells using ENTH Antibody (Center) (bottom histogram) compared to a negative control cell (top histogram). FITC-conjugated goat-anti-rabbit secondary antibodies were used for the analysis.

ENTH Antibody (Center) - Background

ENTH binds to membranes enriched in phosphatidylinositol-4,5-bisphosphate (PtdIns(4,5)P₂). It may have a role in transport via clathrin-coated vesicles from the trans-Golgi network to endosomes. It stimulates clathrin assembly.

ENTH Antibody (Center) - References

Richards, M., et al., J. Neural Transm. 115 (9), 1347-1354 (2008)