

ARMCX1 Polyclonal Antibody
Catalog # AP68514**Specification**

ARMCX1 Polyclonal Antibody - Product Information

Application	WB, IHC-P, IF
Primary Accession	Q9P291
Reactivity	Human
Host	Rabbit
Clonality	Polyclonal

ARMCX1 Polyclonal Antibody - Additional Information**Gene ID** 51309**Other Names**

ARMCX1; ALEX1; AD032; Armadillo repeat-containing X-linked protein 1; ARM protein lost in epithelial cancers on chromosome X 1; Protein ALEX1

Dilution

WB~~Western Blot: 1/500 - 1/2000. Immunohistochemistry: 1/100 - 1/300. Immunofluorescence: 1/200 - 1/1000. ELISA: 1/20000. Not yet tested in other applications.
IHC-P~~N/A
IF~~1:50~200

Format

Liquid in PBS containing 50% glycerol, 0.5% BSA and 0.09% (W/V) sodium azide.

Storage Conditions

-20°C

ARMCX1 Polyclonal Antibody - Protein Information**Name** ARMCX1**Synonyms** ALEX1**Function**

Regulates mitochondrial transport during axon regeneration. Increases the proportion of motile mitochondria by recruiting stationary mitochondria into the motile pool. Enhances mitochondria movement and neurite growth in both adult axons and embryonic neurons. Promotes neuronal survival and axon regeneration after nerve injury. May link mitochondria to the Trak1-kinesin motor complex via its interaction with MIRO1.

Cellular Location

Mitochondrion {ECO:0000250|UniProtKB:Q9CX83}. Mitochondrion outer membrane {ECO:0000250|UniProtKB:Q9CX83}; Single-pass membrane protein

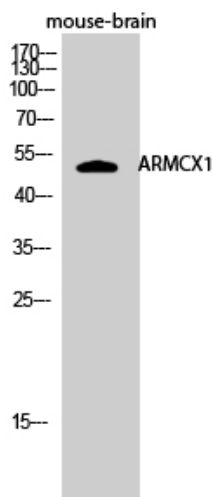
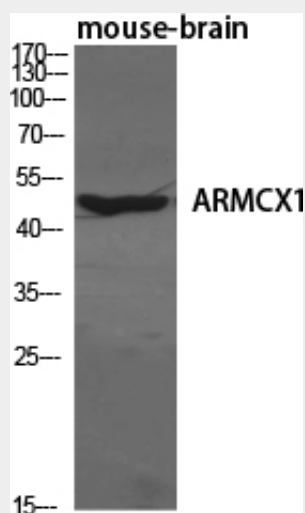
Tissue Location

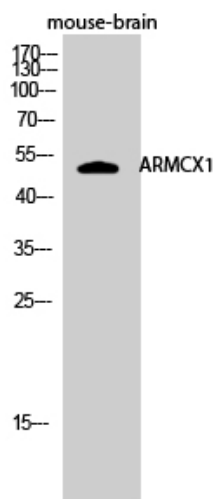
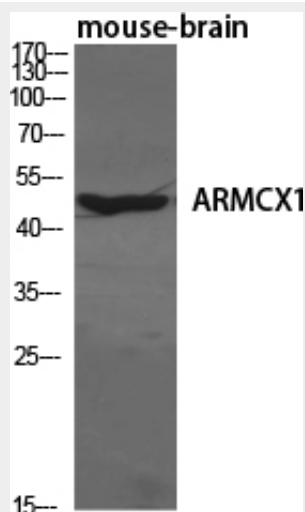
Expressed at high levels ovary, heart, testis, prostate, brain, spleen and colon. Expressed at very low levels in liver and thymus. Not expressed in peripheral blood leukocytes. Not or reduced expressed in lung, prostate, colon, pancreas and ovarian carcinomas.

ARMCX1 Polyclonal Antibody - Protocols

Provided below are standard protocols that you may find useful for product applications.

- [Western Blot](#)
- [Blocking Peptides](#)
- [Dot Blot](#)
- [Immunohistochemistry](#)
- [Immunofluorescence](#)
- [Immunoprecipitation](#)
- [Flow Cytometry](#)
- [Cell Culture](#)

ARMCX1 Polyclonal Antibody - Images



ARMCX1 Polyclonal Antibody - Background

Regulates mitochondrial transport during axon regeneration. Increases the proportion of motile mitochondria by recruiting stationary mitochondria into the motile pool. Enhances mitochondria movement and neurite growth in both adult axons and embryonic neurons. Promotes neuronal survival and axon regeneration after nerve injury. May link mitochondria to the Trak1-kinesin motor complex via its interaction with MIRO1.