

EPB41L4B Antibody (C-term)
Purified Rabbit Polyclonal Antibody (Pab)
Catalog # AP6851b**Specification**

EPB41L4B Antibody (C-term) - Product Information

Application	IHC-P, WB,E
Primary Accession	Q9H329
Reactivity	Human
Host	Rabbit
Clonality	Polyclonal
Isotype	Rabbit IgG
Calculated MW	99712
Antigen Region	650-677

EPB41L4B Antibody (C-term) - Additional Information**Gene ID** 54566**Other Names**

Band 41-like protein 4B, FERM-containing protein CG1, Protein EHM2, EPB41L4B, EHM2

Target/Specificity

This EPB41L4B antibody is generated from rabbits immunized with a KLH conjugated synthetic peptide between 650-677 amino acids from the C-terminal region of human EPB41L4B.

Dilution

IHC-P~~1:50~100

WB~~1:1000

E~~Use at an assay dependent concentration.

Format

Purified polyclonal antibody supplied in PBS with 0.09% (W/V) sodium azide. This antibody is prepared by Saturated Ammonium Sulfate (SAS) precipitation followed by dialysis against PBS.

Storage

Maintain refrigerated at 2-8°C for up to 2 weeks. For long term storage store at -20°C in small aliquots to prevent freeze-thaw cycles.

Precautions

EPB41L4B Antibody (C-term) is for research use only and not for use in diagnostic or therapeutic procedures.

EPB41L4B Antibody (C-term) - Protein Information**Name** EPB41L4B ([HGNC:19818](#))**Function** Up-regulates the activity of the Rho guanine nucleotide exchange factor ARHGEF18 (By

similarity). Involved in the regulation of the circumferential actomyosin belt in epithelial cells (PubMed:[22006950](#)). Promotes cellular adhesion, migration and motility in vitro and may play a role in wound healing (PubMed:[23664528](#)). May have a role in mediating cytoskeletal changes associated with steroid- induced cell differentiation (PubMed:[14521927](#)).

Cellular Location

Cytoplasm. Cell junction, tight junction Note=Accumulates along apical cell-cell boundaries and is also detected in the cytoplasm in a punctate manner.

Tissue Location

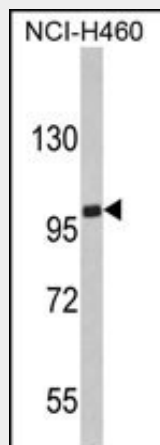
Expressed at higher levels in acute wounds than chronic wounds with increased expression in healing wounds, especially at the leading wound edge (PubMed:23664528). Isoform 1 is highly expressed in brain. Isoform 2 is highly expressed in testis with lower levels in prostate and breast (PubMed:14521927)

EPB41L4B Antibody (C-term) - Protocols

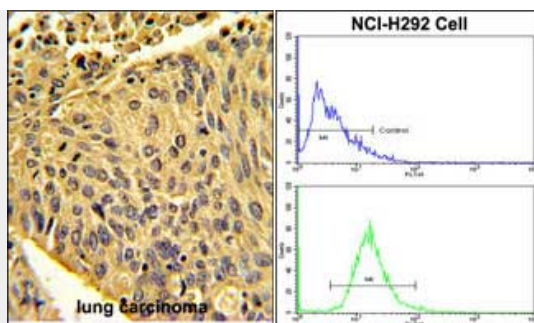
Provided below are standard protocols that you may find useful for product applications.

- [Western Blot](#)
- [Blocking Peptides](#)
- [Dot Blot](#)
- [Immunohistochemistry](#)
- [Immunofluorescence](#)
- [Immunoprecipitation](#)
- [Flow Cytometry](#)
- [Cell Culture](#)

EPB41L4B Antibody (C-term) - Images



Western blot analysis of EPB41L4B Antibody (C-term) (Cat. #AP6851b) in NCI-H460 cell line lysates (35ug/lane). EPB41L4B (arrow) was detected using the purified Pab.(2ug/ml)



(LEFT) Formalin-fixed and paraffin-embedded human lung carcinoma with EPB41L4B Antibody (C-term), which was peroxidase-conjugated to the secondary antibody, followed by DAB staining. This data demonstrates the use of this antibody for immunohistochemistry; clinical relevance has not been evaluated. (RIGHT) Flow cytometric analysis of NCI-H292 cells using EPB41L4B Antibody (C-term) (bottom histogram) compared to a negative control cell (top histogram). FITC-conjugated goat-anti-rabbit secondary antibodies were used for the analysis.

EPB41L4B Antibody (C-term) - References

Leyne, M., et al., Unpublished