

Arylsulfatase F Polyclonal Antibody
Catalog # AP68533**Specification**

Arylsulfatase F Polyclonal Antibody - Product Information

Application	WB, IHC-P
Primary Accession	P54793
Reactivity	Human, Monkey
Host	Rabbit
Clonality	Polyclonal

Arylsulfatase F Polyclonal Antibody - Additional Information**Gene ID** 416**Other Names**

ARSF; Arylsulfatase F; ASF

Dilution

WB~~Western Blot: 1/500 - 1/2000. Immunohistochemistry: 1/100 - 1/300. ELISA: 1/40000. Not yet tested in other applications.

IHC-P~~N/A

Format

Liquid in PBS containing 50% glycerol, 0.5% BSA and 0.09% (W/V) sodium azide.

Storage Conditions

-20°C

Arylsulfatase F Polyclonal Antibody - Protein Information**Name** ARSF**Function**

Exhibits arylsulfatase activity towards the artificial substrate 4-methylumbelliferyl sulfate.

Cellular Location

Secreted.

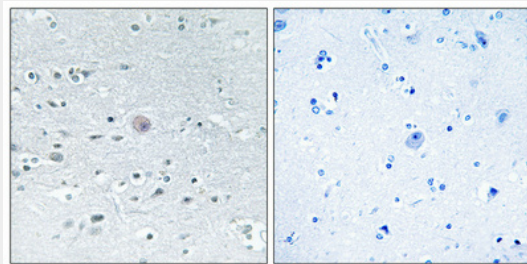
Arylsulfatase F Polyclonal Antibody - Protocols

Provided below are standard protocols that you may find useful for product applications.

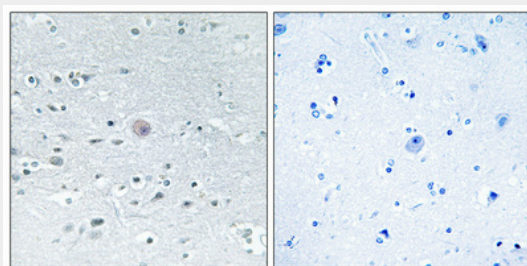
- [Western Blot](#)
- [Blocking Peptides](#)
- [Dot Blot](#)

- [Immunohistochemistry](#)
- [Immunofluorescence](#)
- [Immunoprecipitation](#)
- [Flow Cytometry](#)
- [Cell Culture](#)

Arylsulfatase F Polyclonal Antibody - Images



Immunohistochemical analysis of paraffin-embedded Human brain. Antibody was diluted at 1:100(4°,overnight). High-pressure and temperature Tris-EDTA,pH8.0 was used for antigen retrieval. Negative contrl (right) obtaned from antibody was pre-absorbed by immunogen peptide.



Immunohistochemical analysis of paraffin-embedded Human brain. Antibody was diluted at 1:100(4°,overnight). High-pressure and temperature Tris-EDTA,pH8.0 was used for antigen retrieval. Negative contrl (right) obtaned from antibody was pre-absorbed by immunogen peptide.