

**WSB2 Antibody (C-term)**  
**Purified Rabbit Polyclonal Antibody (Pab)**  
**Catalog # AP6853b****Specification**

---

**WSB2 Antibody (C-term) - Product Information**

Application	WB,E
Primary Accession	<a href="#">Q9NYS7</a>
Other Accession	<a href="#">O54929</a> , <a href="#">Q0V8J1</a>
Reactivity	Human
Predicted	Bovine, Mouse
Host	Rabbit
Clonality	Polyclonal
Isotype	Rabbit IgG
Calculated MW	45286
Antigen Region	375-404

**WSB2 Antibody (C-term) - Additional Information****Gene ID** 55884**Other Names**

WD repeat and SOCS box-containing protein 2, WSB-2, CS box-containing WD protein, WSB2

**Target/Specificity**

This WSB2 antibody is generated from rabbits immunized with a KLH conjugated synthetic peptide between 375-404 amino acids from the C-terminal region of human WSB2.

**Dilution**

WB~~1:1000

E~~Use at an assay dependent concentration.

**Format**

Purified polyclonal antibody supplied in PBS with 0.09% (W/V) sodium azide. This antibody is purified through a protein A column, followed by peptide affinity purification.

**Storage**

Maintain refrigerated at 2-8°C for up to 2 weeks. For long term storage store at -20°C in small aliquots to prevent freeze-thaw cycles.

**Precautions**

WSB2 Antibody (C-term) is for research use only and not for use in diagnostic or therapeutic procedures.

**WSB2 Antibody (C-term) - Protein Information****Name** WSB2

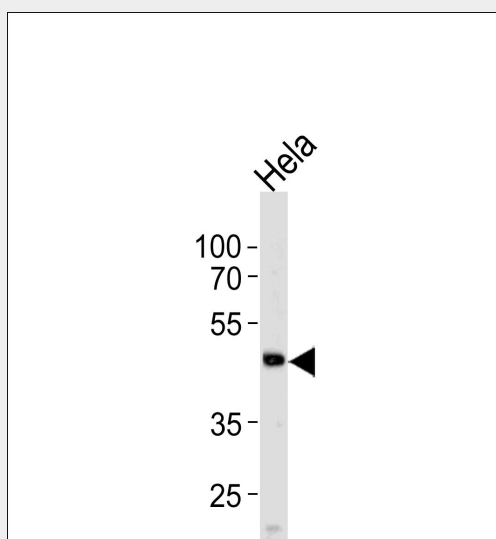
**Function** May be a substrate-recognition component of a SCF-like ECS (Elongin-Cullin-SOCS-box protein) E3 ubiquitin ligase complex which mediates the ubiquitination and subsequent proteasomal degradation of target proteins.

### **WSB2 Antibody (C-term) - Protocols**

Provided below are standard protocols that you may find useful for product applications.

- [Western Blot](#)
- [Blocking Peptides](#)
- [Dot Blot](#)
- [Immunohistochemistry](#)
- [Immunofluorescence](#)
- [Immunoprecipitation](#)
- [Flow Cytometry](#)
- [Cell Culture](#)

### **WSB2 Antibody (C-term) - Images**



Western blot analysis of lysate from HeLa cell line, using WSB2 Antibody (C-term)(Cat. #AP6853b). AP6853b was diluted at 1:1000 at each lane. A goat anti-rabbit IgG H&L(HRP) at 1:5000 dilution was used as the secondary antibody. Lysate at 35ug per lane.

### **WSB2 Antibody (C-term) - Background**

WSB2 is a member of the WD-protein subfamily. This protein contains five WD-repeats spanning most of the protein and an SOCS box in the C-terminus. The SOCS box may act as a bridge between specific substrate-binding domains and E3 ubiquitin protein ligases.

### **WSB2 Antibody (C-term) - References**

Kile,B.T., et.al., Trends Biochem. Sci. 27 (5), 235-241 (2002)