

Asf1a Polyclonal Antibody Catalog # AP68551

Specification

Asf1a Polyclonal Antibody - Product Information

Application	WB, IF
Primary Accession	O9Y294
Reactivity	Human, Mouse
Host	Rabbit
Clonality	Polyclonal

Asf1a Polyclonal Antibody - Additional Information

Gene ID 25842

Other Names

ASF1A; CGI-98; HSPC146; Histone chaperone ASF1A; Anti-silencing function protein 1 homolog A; hAsf1; hAsf1a; CCG1-interacting factor A; CIA; hCIA

Dilution

WB~~Western Blot: 1/500 - 1/2000. Immunofluorescence: 1/200 - 1/1000. ELISA: 1/20000. Not yet tested in other applications.

IF~~1:50~200

Format

Liquid in PBS containing 50% glycerol, 0.5% BSA and 0.09% (W/V) sodium azide.

Storage Conditions

-20°C

Asf1a Polyclonal Antibody - Protein Information

Name ASF1A {ECO:0000303|PubMed:10759893, ECO:0000312|HGNC:HGNC:20995}

Function

Histone chaperone that facilitates histone deposition and histone exchange and removal during nucleosome assembly and disassembly (PubMed:10759893, PubMed:11897662, PubMed:12842904, PubMed:14718166, PubMed:15664198, PubMed:16151251, PubMed:21454524). Cooperates with chromatin assembly factor 1 (CAF-1) to promote replication-dependent chromatin assembly and with HIRA to promote replication-independent chromatin assembly (PubMed:11897662, PubMed:14718166, PubMed:<a

[15664198](http://www.uniprot.org/citations/15664198)). Promotes homologous recombination-mediated repair of double-strand breaks (DSBs) at stalled or collapsed replication forks: acts by mediating histone replacement at DSBs, leading to recruitment of the MMS22L-TONSL complex and subsequent loading of RAD51 (PubMed:[29478807](http://www.uniprot.org/citations/29478807)). Also involved in the nuclear import of the histone H3-H4 dimer together with importin-4 (IPO4): specifically recognizes and binds newly synthesized histones with the monomethylation of H3 'Lys-9' and acetylation at 'Lys-14' (H3K9me1K14ac) marks, and diacetylation at 'Lys-5' and 'Lys-12' of H4 (H4K5K12ac) marks in the cytosol (PubMed:[21454524](http://www.uniprot.org/citations/21454524), PubMed:[29408485](http://www.uniprot.org/citations/29408485)). Required for the formation of senescence-associated heterochromatin foci (SAHF) and efficient senescence-associated cell cycle exit (PubMed:[15621527](http://www.uniprot.org/citations/15621527)).

Cellular Location

Nucleus. Chromosome

Tissue Location

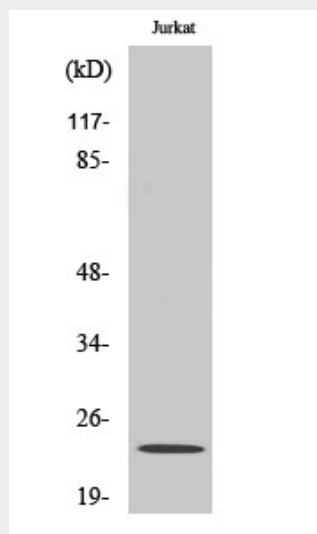
Ubiquitously expressed.

Asf1a Polyclonal Antibody - Protocols

Provided below are standard protocols that you may find useful for product applications.

- [Western Blot](#)
- [Blocking Peptides](#)
- [Dot Blot](#)
- [Immunohistochemistry](#)
- [Immunofluorescence](#)
- [Immunoprecipitation](#)
- [Flow Cytometry](#)
- [Cell Culture](#)

Asf1a Polyclonal Antibody - Images



Western Blot analysis of various cells using Asf1a Polyclonal Antibody cells nucleus extracted by Minute TM Cytoplasmic and Nuclear Fractionation kit (SC-003, Inventibiotec, MN, USA).

Asf1a Polyclonal Antibody - Background

Histone chaperone that facilitates histone deposition and histone exchange and removal during nucleosome assembly and disassembly. Cooperates with chromatin assembly factor 1 (CAF-1) to promote replication-dependent chromatin assembly and with HIRA to promote replication-independent chromatin assembly. Required for the formation of senescence-associated heterochromatin foci (SAHF) and efficient senescence-associated cell cycle exit.