

ECE-1 Antibody (C-term)
Affinity Purified Rabbit Polyclonal Antibody (Pab)
Catalog # AP6855b**Specification**

ECE-1 Antibody (C-term) - Product Information

Application	WB, IHC-P, FC,E
Primary Accession	P42892
Other Accession	P42893 , Q4PZA2 , P42891
Reactivity	Human
Predicted	Bovine, Mouse, Rat
Host	Rabbit
Clonality	Polyclonal
Isotype	Rabbit IgG
Antigen Region	528-556

ECE-1 Antibody (C-term) - Additional Information**Gene ID** 1889**Other Names**

Endothelin-converting enzyme 1, ECE-1, ECE1

Target/Specificity

This ECE-1 antibody is generated from rabbits immunized with a KLH conjugated synthetic peptide between 528-556 amino acids of human ECE-1.

Dilution

WB~~1:1000
IHC-P~~1:50~100
FC~~1:10~50

Format

Purified polyclonal antibody supplied in PBS with 0.09% (W/V) sodium azide. This antibody is purified through a protein A column, followed by peptide affinity purification.

Storage

Maintain refrigerated at 2-8°C for up to 2 weeks. For long term storage store at -20°C in small aliquots to prevent freeze-thaw cycles.

Precautions

ECE-1 Antibody (C-term) is for research use only and not for use in diagnostic or therapeutic procedures.

ECE-1 Antibody (C-term) - Protein Information**Name** ECE1

Function Converts big endothelin-1 to endothelin-1.

Cellular Location

Cell membrane; Single-pass type II membrane protein

Tissue Location

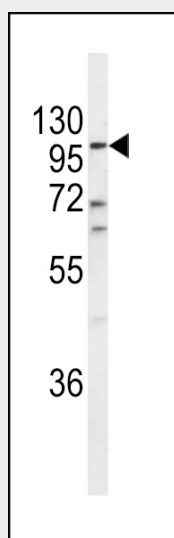
All isoforms are expressed in umbilical vein endothelial cells, polynuclear neutrophils, fibroblasts, atrium cardiomyocytes and ventricles. Isoforms A, B and C are also expressed in placenta, lung, heart, adrenal gland and pheochromocytoma; isoforms A and C in liver, testis and small intestine; isoform B, C and D in endothelial cells and umbilical vein smooth muscle cells; isoforms C and D in saphenous vein cells, and isoform C in kidney

ECE-1 Antibody (C-term) - Protocols

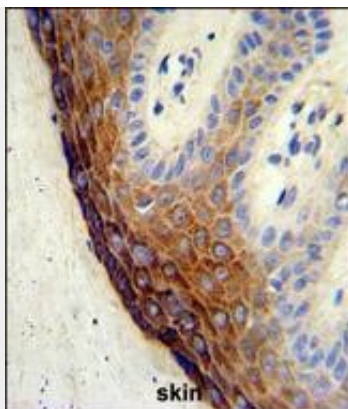
Provided below are standard protocols that you may find useful for product applications.

- [Western Blot](#)
- [Blocking Peptides](#)
- [Dot Blot](#)
- [Immunohistochemistry](#)
- [Immunofluorescence](#)
- [Immunoprecipitation](#)
- [Flow Cytometry](#)
- [Cell Culture](#)

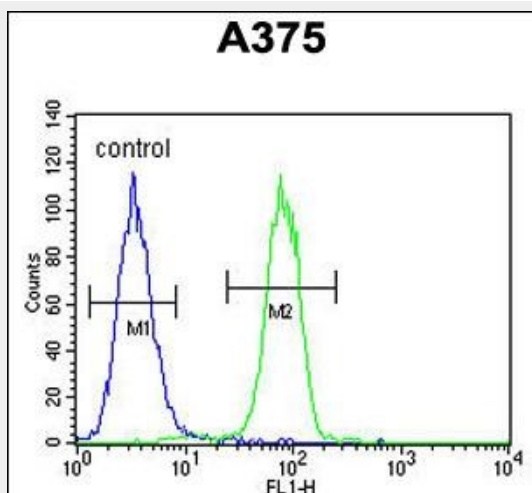
ECE-1 Antibody (C-term) - Images



Western blot analysis of ECE-1 Antibody (C-term) (Cat. #AP6855b) in A2058 cell line lysates (35ug/lane). ECE-1 (arrow) was detected using the purified Pab.



Formalin-fixed and paraffin-embedded human skin tissue reacted with ECE-1 Antibody (C-term), which was peroxidase-conjugated to the secondary antibody, followed by DAB staining. This data demonstrates the use of this antibody for immunohistochemistry; clinical relevance has not been evaluated.



ECE-1 Antibody (C-term) (Cat. #AP6855b) flow cytometric analysis of A375 cells (right histogram) compared to a negative control cell (left histogram). FITC-conjugated goat-anti-rabbit secondary antibodies were used for the analysis.

ECE-1 Antibody (C-term) - Background

ECE-1 is involved in proteolytic processing of endothelin precursors to biologically active peptides.

ECE-1 Antibody (C-term) - References

Cottrell, G.S., et al., J. Biol. Chem. 284 (33), 22411-22425 (2009)