

BART1 Polyclonal Antibody
Catalog # AP68636**Specification**

BART1 Polyclonal Antibody - Product Information

Application	WB
Primary Accession	Q9Y2Y0
Reactivity	Human, Mouse, Rat
Host	Rabbit
Clonality	Polyclonal

BART1 Polyclonal Antibody - Additional Information**Gene ID** 23568**Other Names**

ARL2BP; BART; BART1; ADP-ribosylation factor-like protein 2-binding protein; ARF-like 2-binding protein; Binder of ARF2 protein 1

Dilution

WB~~Western Blot: 1/500 - 1/2000. ELISA: 1/20000. Not yet tested in other applications.

Format

Liquid in PBS containing 50% glycerol, 0.5% BSA and 0.09% (W/V) sodium azide.

Storage Conditions

-20°C

BART1 Polyclonal Antibody - Protein Information**Name** ARL2BP**Synonyms** BART, BART1**Function**

Together with ARL2, plays a role in the nuclear translocation, retention and transcriptional activity of STAT3. May play a role as an effector of ARL2.

Cellular Location

Cytoplasm. Mitochondrion intermembrane space. Cytoplasm, cytoskeleton, microtubule organizing center, centrosome Nucleus. Cytoplasm, cytoskeleton, spindle. Cytoplasm, cytoskeleton, cilium basal body. Note=The complex formed with ARL2BP, ARL2 and SLC25A4 is expressed in mitochondria (By similarity). Detected in the midbody matrix. Not detected in the Golgi, nucleus and on the mitotic spindle. Centrosome-associated throughout the cell cycle. Not detected to interphase microtubules. In retina photoreceptor cells, localized in the distal connecting cilia, basal body, ciliary-associated centriole, and ciliary rootlet. Interaction with ARL2 may be required for cilia basal body localization.

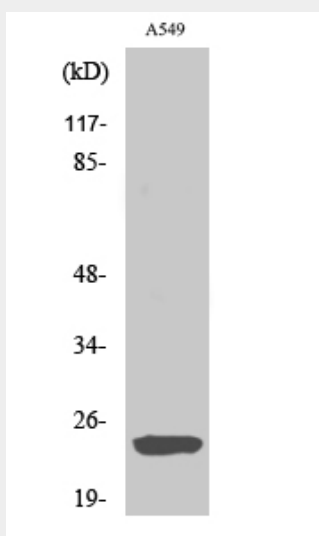
Tissue Location

Expressed in retina pigment epithelial cells (at protein level). Widely expressed.

BART1 Polyclonal Antibody - Protocols

Provided below are standard protocols that you may find useful for product applications.

- [Western Blot](#)
- [Blocking Peptides](#)
- [Dot Blot](#)
- [Immunohistochemistry](#)
- [Immunofluorescence](#)
- [Immunoprecipitation](#)
- [Flow Cytometry](#)
- [Cell Culture](#)

BART1 Polyclonal Antibody - Images**BART1 Polyclonal Antibody - Background**

Together with ARL2, plays a role in the nuclear translocation, retention and transcriptional activity of STAT3. May play a role as an effector of ARL2.