

**BCSC-1 Polyclonal Antibody**  
**Catalog # AP68666****Specification**

---

**BCSC-1 Polyclonal Antibody - Product Information**

Application	WB
Primary Accession	<a href="#">O00534</a>
Reactivity	Human
Host	Rabbit
Clonality	Polyclonal

**BCSC-1 Polyclonal Antibody - Additional Information****Gene ID** 4013**Other Names**

VWA5A; BCSC1; LOH11CR2A; von Willebrand factor A domain-containing protein 5A; Breast cancer suppressor candidate 1; BCSC-1; Loss of heterozygosity 11 chromosomal region 2 gene A protein

**Dilution**

WB~~Western Blot: 1/500 - 1/2000. ELISA: 1/20000. Not yet tested in other applications.

**Format**

Liquid in PBS containing 50% glycerol, 0.5% BSA and 0.09% (W/V) sodium azide.

**Storage Conditions**

-20°C

**BCSC-1 Polyclonal Antibody - Protein Information****Name** VWA5A**Synonyms** BCSC1, LOH11CR2A**Function**

May play a role in tumorigenesis as a tumor suppressor. Altered expression of this protein and disruption of the molecular pathway it is involved in, may contribute directly to or modify tumorigenesis.

**Tissue Location**

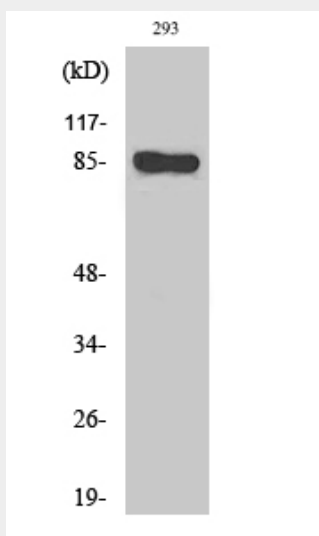
Expressed at low level in many tissues. Not expressed in 80% of tumor cell lines tested

**BCSC-1 Polyclonal Antibody - Protocols**

Provided below are standard protocols that you may find useful for product applications.

- [Western Blot](#)
- [Blocking Peptides](#)
- [Dot Blot](#)
- [Immunohistochemistry](#)
- [Immunofluorescence](#)
- [Immunoprecipitation](#)
- [Flow Cytometry](#)
- [Cell Culture](#)

#### BCSC-1 Polyclonal Antibody - Images



Western Blot analysis of various cells using BCSC-1 Polyclonal Antibody

#### BCSC-1 Polyclonal Antibody - Background

May play a role in tumorigenesis as a tumor suppressor. Altered expression of this protein and disruption of the molecular pathway it is involved in, may contribute directly to or modify tumorigenesis.