

BET3 Polyclonal Antibody
Catalog # AP68669**Specification**

BET3 Polyclonal Antibody - Product Information

Application	WB, IHC-P
Primary Accession	O43617
Reactivity	Human, Mouse, Rat
Host	Rabbit
Clonality	Polyclonal

BET3 Polyclonal Antibody - Additional Information**Gene ID** 27095**Other Names**

TRAPPC3; BET3; CDABP0066; Trafficking protein particle complex subunit 3; BET3 homolog

Dilution

WB~~Western Blot: 1/500 - 1/2000. Immunohistochemistry: 1/100 - 1/300. ELISA: 1/5000. Not yet tested in other applications.

IHC-P~~N/A

Format

Liquid in PBS containing 50% glycerol, 0.5% BSA and 0.09% (W/V) sodium azide.

Storage Conditions

-20°C

BET3 Polyclonal Antibody - Protein Information**Name** TRAPPC3 {ECO:0000303|PubMed:19416478, ECO:0000312|HGNC:HGNC:19942}**Function**

May play a role in vesicular transport from endoplasmic reticulum to Golgi.

Cellular Location

Golgi apparatus, cis-Golgi network. Endoplasmic reticulum

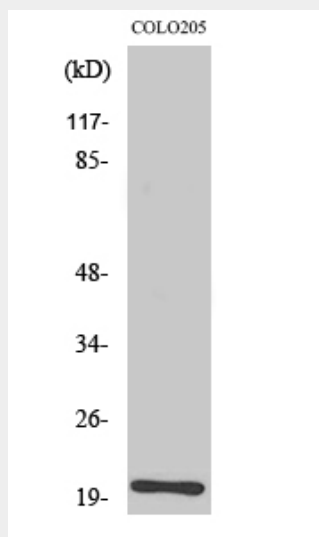
BET3 Polyclonal Antibody - Protocols

Provided below are standard protocols that you may find useful for product applications.

- [Western Blot](#)
- [Blocking Peptides](#)
- [Dot Blot](#)

- [Immunohistochemistry](#)
- [Immunofluorescence](#)
- [Immunoprecipitation](#)
- [Flow Cytometry](#)
- [Cell Culture](#)

BET3 Polyclonal Antibody - Images



Western Blot analysis of various cells using BET3 Polyclonal Antibody diluted at 1:500

BET3 Polyclonal Antibody - Background

May play a role in vesicular transport from endoplasmic reticulum to Golgi.