

BMP-8A Polyclonal Antibody
Catalog # AP68688**Specification**

BMP-8A Polyclonal Antibody - Product Information

| | |
|-------------------|------------------------|
| Application | WB, IHC-P, IF |
| Primary Accession | Q7Z5Y6 |
| Reactivity | Human |
| Host | Rabbit |
| Clonality | Polyclonal |

BMP-8A Polyclonal Antibody - Additional Information**Gene ID** 353500**Other Names**

BMP8A; Bone morphogenetic protein 8A; BMP-8A

Dilution

WB~~Western Blot: 1/500 - 1/2000. Immunohistochemistry: 1/100 - 1/300. Immunofluorescence: 1/200 - 1/1000. ELISA: 1/20000. Not yet tested in other applications.

IHC-P~~N/A

IF~~1:50~200

Format

Liquid in PBS containing 50% glycerol, 0.5% BSA and 0.09% (W/V) sodium azide.

Storage Conditions

-20°C

BMP-8A Polyclonal Antibody - Protein Information**Name** BMP8A**Function**

Induces cartilage and bone formation. May be the osteoinductive factor responsible for the phenomenon of epithelial osteogenesis. Plays a role in calcium regulation and bone homeostasis (By similarity). Signaling protein involved in regulation of thermogenesis and energy balance. Proposed to increase the peripheral response of brown adipose tissue (BAT) to adrenergic stimulation while acting centrally in the hypothalamus to increase sympathetic output to BAT.

Cellular Location

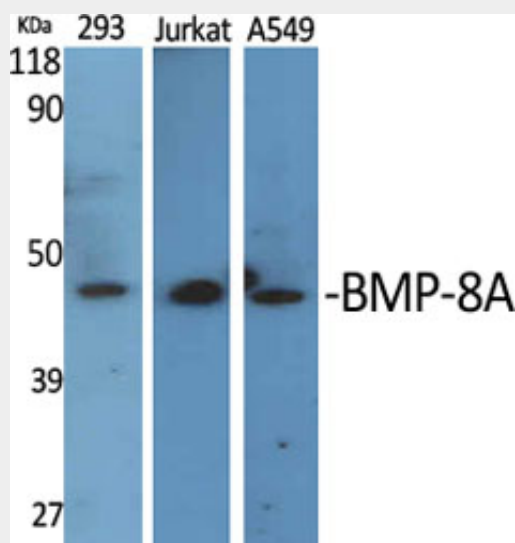
Secreted.

BMP-8A Polyclonal Antibody - Protocols

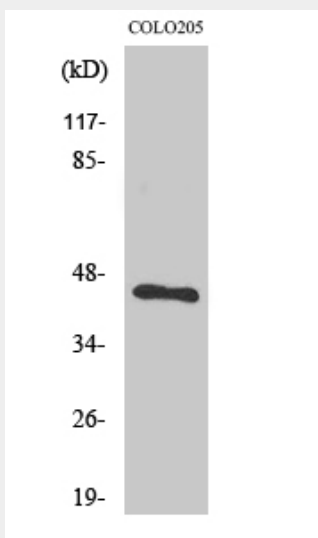
Provided below are standard protocols that you may find useful for product applications.

- [Western Blot](#)
- [Blocking Peptides](#)
- [Dot Blot](#)
- [Immunohistochemistry](#)
- [Immunofluorescence](#)
- [Immunoprecipitation](#)
- [Flow Cytometry](#)
- [Cell Culture](#)

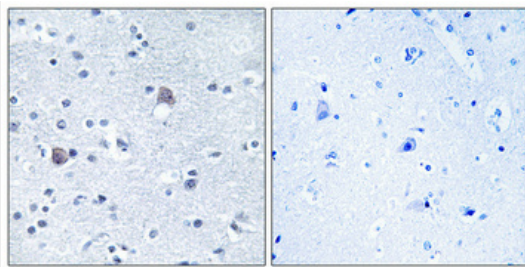
BMP-8A Polyclonal Antibody - Images



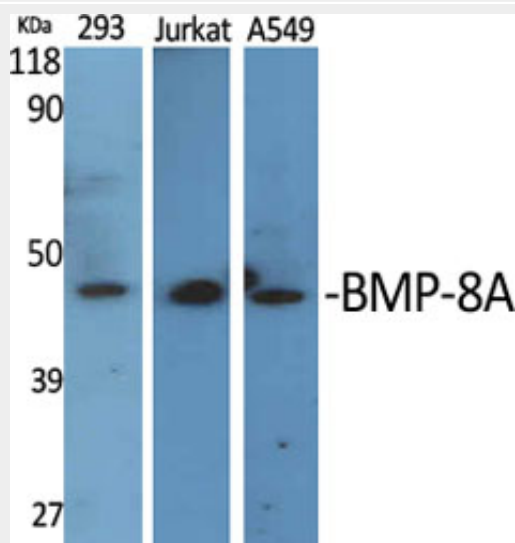
Western Blot analysis of various cells using BMP-8A Polyclonal Antibody



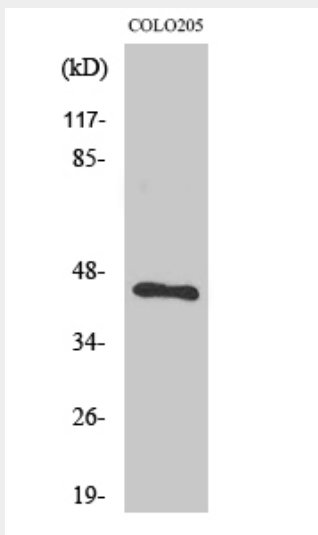
Western Blot analysis of COLO205 cells using BMP-8A Polyclonal Antibody



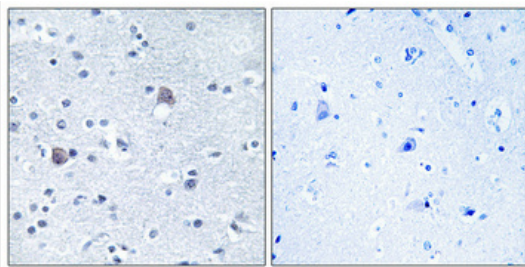
Immunohistochemical analysis of paraffin-embedded Human brain. Antibody was diluted at 1:100(4°,overnight). High-pressure and temperature Tris-EDTA,pH8.0 was used for antigen retrieval. Negative contrl (right) obtaned from antibody was pre-absorbed by immunogen peptide.



Western Blot analysis of various cells using BMP-8A Polyclonal Antibody



Western Blot analysis of COLO205 cells using BMP-8A Polyclonal Antibody



Immunohistochemical analysis of paraffin-embedded Human brain. Antibody was diluted at 1:100(4°,overnight). High-pressure and temperature Tris-EDTA,pH8.0 was used for antigen retrieval. Negative contrl (right) obtained from antibody was pre-absorbed by immunogen peptide.

BMP-8A Polyclonal Antibody - Background

Induces cartilage and bone formation. May be the osteoinductive factor responsible for the phenomenon of epithelial osteogenesis. Plays a role in calcium regulation and bone homeostasis (By similarity). Signaling protein involved in regulation of thermogenesis and energy balance. Proposed to increase the peripheral response of brown adipose tissue (BAT) to adrenergic stimulation while acting centrally in the hypothalamus to increase sympathetic output to BAT.