

**BRCAA1 Polyclonal Antibody**  
**Catalog # AP68704****Specification****BRCAA1 Polyclonal Antibody - Product Information**

Application	WB
Primary Accession	<a href="#">Q4LE39</a>
Reactivity	Human, Mouse, Rat
Host	Rabbit
Clonality	Polyclonal

**BRCAA1 Polyclonal Antibody - Additional Information****Gene ID** 51742**Other Names**

ARID4B; BRCAA1; RBBP1L1; RBP1L1; SAP180; AT-rich interactive domain-containing protein 4B; ARID domain-containing protein 4B; 180 kDa Sin3-associated polypeptide; Sin3-associated polypeptide p180; Breast cancer-associated antigen BRCAA1; Hi

**Dilution**

WB~~Western Blot: 1/500 - 1/2000. ELISA: 1/10000. Not yet tested in other applications.

**Format**

Liquid in PBS containing 50% glycerol, 0.5% BSA and 0.09% (W/V) sodium azide.

**Storage Conditions**

-20°C

**BRCAA1 Polyclonal Antibody - Protein Information****Name** ARID4B**Synonyms** BRCAA1, RBBP1L1, RBP1L1, SAP180**Function**

Acts as a transcriptional repressor (PubMed:<a href="http://www.uniprot.org/citations/12724404" target="\_blank">12724404</a>). May function in the assembly and/or enzymatic activity of the Sin3A corepressor complex or in mediating interactions between the complex and other regulatory complexes (PubMed:<a href="http://www.uniprot.org/citations/12724404" target="\_blank">12724404</a>). Plays a role in the regulation of epigenetic modifications at the PWS/AS imprinting center near the SNRPN promoter, where it might function as part of a complex with RB1 and ARID4A. Involved in spermatogenesis, together with ARID4A, where it functions as a transcriptional coactivator for AR (androgen receptor) and enhances expression of genes required for sperm maturation. Regulates expression of the tight junction protein CLDN3 in the testis, which is important for integrity of the blood-testis barrier. Plays a role in myeloid homeostasis where it regulates the histone methylation state of bone marrow cells and expression of various genes involved in hematopoiesis. May function as a leukemia suppressor (By similarity).

**Cellular Location**

Nucleus {ECO:0000255|PROSITE-ProRule:PRU00355}. Cytoplasm Note=Cytoplasmic in breast cancer cells.

**Tissue Location**

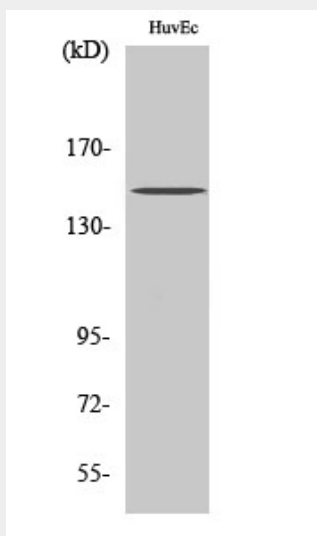
Highly expressed in the testis and in breast, lung, colon, pancreatic and ovarian cancers.

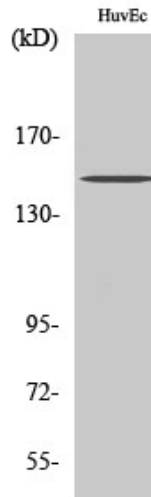
Expressed at low levels in the thymus, prostate and ovary.

**BRCAA1 Polyclonal Antibody - Protocols**

Provided below are standard protocols that you may find useful for product applications.

- [Western Blot](#)
- [Blocking Peptides](#)
- [Dot Blot](#)
- [Immunohistochemistry](#)
- [Immunofluorescence](#)
- [Immunoprecipitation](#)
- [Flow Cytometry](#)
- [Cell Culture](#)

**BRCAA1 Polyclonal Antibody - Images**



### **BRCAA1 Polyclonal Antibody - Background**

Acts as a transcriptional repressor (PubMed:12724404). May function in the assembly and/or enzymatic activity of the Sin3A corepressor complex or in mediating interactions between the complex and other regulatory complexes (PubMed:12724404). Plays a role in the regulation of epigenetic modifications at the PWS/AS imprinting center near the SNRPN promoter, where it might function as part of a complex with RB1 and ARID4A. Involved in spermatogenesis, together with ARID4A, where it functions as a transcriptional coactivator for AR (androgen receptor) and enhances expression of genes required for sperm maturation. Regulates expression of the tight junction protein CLDN3 in the testis, which is important for integrity of the blood-testis barrier. Plays a role in myeloid homeostasis where it regulates the histone methylation state of bone marrow cells and expression of various genes involved in hematopoiesis. May function as a leukemia suppressor (By similarity).