

BSX Polyclonal Antibody
Catalog # AP68723**Specification**

BSX Polyclonal Antibody - Product Information

Application	WB
Primary Accession	Q3C1V8
Reactivity	Human, Mouse, Rat
Host	Rabbit
Clonality	Polyclonal

BSX Polyclonal Antibody - Additional Information**Gene ID** 390259**Other Names**

BSX; BSX1; Brain-specific homeobox protein homolog

Dilution

WB~~Western Blot: 1/500 - 1/2000. ELISA: 1/5000. Not yet tested in other applications.

Format

Liquid in PBS containing 50% glycerol, 0.5% BSA and 0.09% (W/V) sodium azide.

Storage Conditions

-20°C

BSX Polyclonal Antibody - Protein Information**Name** BSX**Synonyms** BSX1**Function**

DNA binding protein that function as transcriptional activator. Is essential for normal postnatal growth and nursing. Is an essential factor for neuronal neuropeptide Y and agouti-related peptide function and locomotory behavior in the control of energy balance (By similarity).

Cellular Location

Nucleus {ECO:0000250|UniProtKB:Q810B3}.

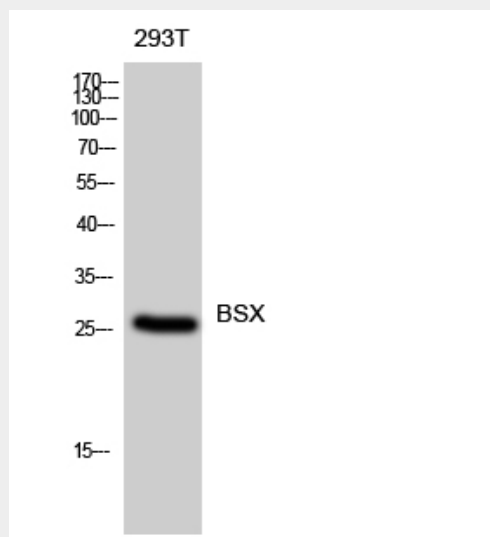
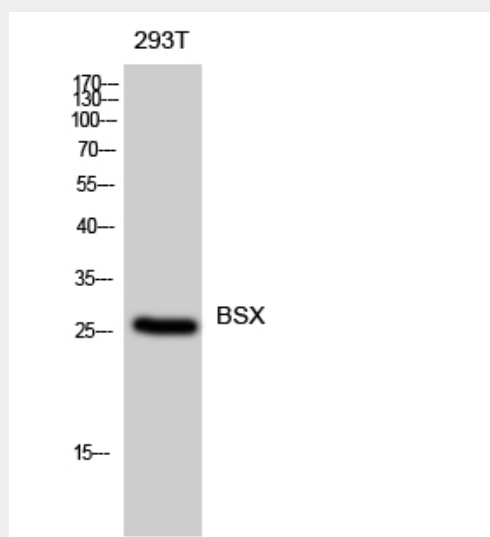
BSX Polyclonal Antibody - Protocols

Provided below are standard protocols that you may find useful for product applications.

- [Western Blot](#)

- [Blocking Peptides](#)
- [Dot Blot](#)
- [Immunohistochemistry](#)
- [Immunofluorescence](#)
- [Immunoprecipitation](#)
- [Flow Cytometry](#)
- [Cell Culture](#)

BSX Polyclonal Antibody - Images



BSX Polyclonal Antibody - Background

DNA binding protein that function as transcriptional activator. Is essential for normal postnatal growth and nursing. Is an essential factor for neuronal neuropeptide Y and agouti- related peptide function and locomotory behavior in the control of energy balance (By similarity).