

Bub3 Polyclonal Antibody
Catalog # AP68731**Specification**

Bub3 Polyclonal Antibody - Product Information

Application	WB, IHC-P, IF
Primary Accession	O43684
Reactivity	Human, Mouse, Rat
Host	Rabbit
Clonality	Polyclonal

Bub3 Polyclonal Antibody - Additional Information**Gene ID** 9184**Other Names**

BUB3; Mitotic checkpoint protein BUB3

Dilution

WB~~Western Blot: 1/500 - 1/2000. Immunohistochemistry: 1/100 - 1/300. Immunofluorescence: 1/200 - 1/1000. ELISA: 1/5000. Not yet tested in other applications.

IHC-P~~N/A

IF~~1:50~200

Format

Liquid in PBS containing 50% glycerol, 0.5% BSA and 0.09% (W/V) sodium azide.

Storage Conditions

-20°C

Bub3 Polyclonal Antibody - Protein Information**Name** BUB3**Function**

Has a dual function in spindle-assembly checkpoint signaling and in promoting the establishment of correct kinetochore-microtubule (K-MT) attachments. Promotes the formation of stable end-on bipolar attachments. Necessary for kinetochore localization of BUB1. Regulates chromosome segregation during oocyte meiosis. The BUB1/BUB3 complex plays a role in the inhibition of anaphase-promoting complex or cyclosome (APC/C) when spindle-assembly checkpoint is activated and inhibits the ubiquitin ligase activity of APC/C by phosphorylating its activator CDC20. This complex can also phosphorylate MAD1L1.

Cellular Location

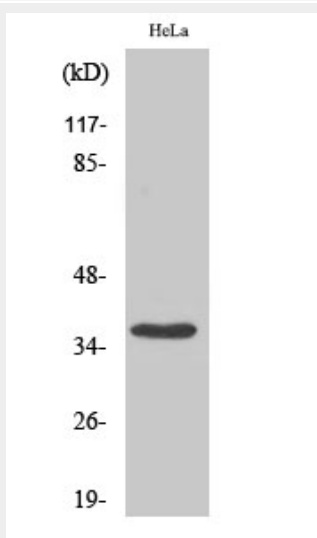
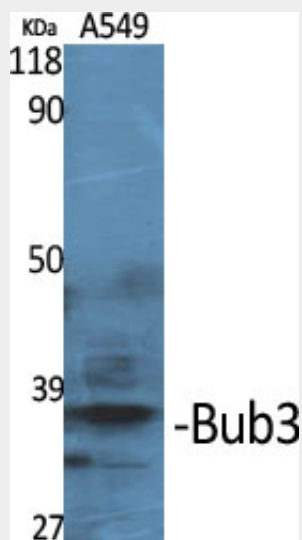
Nucleus. Chromosome, centromere, kinetochore. Note=Starts to localize at kinetochores in prometaphase I (Pro-MI) stage and maintains the localization until the metaphase I- anaphase I (MI-AI) transition.

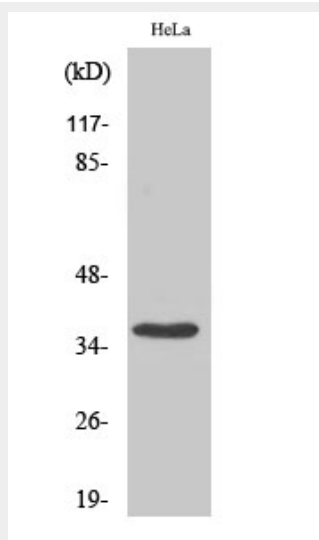
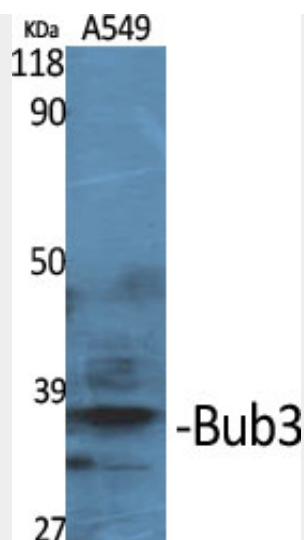
Bub3 Polyclonal Antibody - Protocols

Provided below are standard protocols that you may find useful for product applications.

- [Western Blot](#)
- [Blocking Peptides](#)
- [Dot Blot](#)
- [Immunohistochemistry](#)
- [Immunofluorescence](#)
- [Immunoprecipitation](#)
- [Flow Cytometry](#)
- [Cell Culture](#)

Bub3 Polyclonal Antibody - Images





Bub3 Polyclonal Antibody - Background

Has a dual function in spindle-assembly checkpoint signaling and in promoting the establishment of correct kinetochore-microtubule (K-MT) attachments. Promotes the formation of stable end-on bipolar attachments. Necessary for kinetochore localization of BUB1. Regulates chromosome segregation during oocyte meiosis. The BUB1/BUB3 complex plays a role in the inhibition of anaphase-promoting complex or cyclosome (APC/C) when spindle-assembly checkpoint is activated and inhibits the ubiquitin ligase activity of APC/C by phosphorylating its activator CDC20. This complex can also phosphorylate MAD1L1.