

PAX8 Antibody (Center)
Affinity Purified Rabbit Polyclonal Antibody (Pab)
Catalog # AP6874C

Specification

PAX8 Antibody (Center) - Product Information

Application	FC, IHC-P, WB,E
Primary Accession	Q06710
Other Accession	Q00288
Reactivity	Human
Predicted	Mouse
Host	Rabbit
Clonality	Polyclonal
Isotype	Rabbit IgG
Antigen Region	285-313

PAX8 Antibody (Center) - Additional Information

Gene ID 7849

Other Names

Paired box protein Pax-8, PAX8

Target/Specificity

This PAX8 antibody is generated from rabbits immunized with a KLH conjugated synthetic peptide between 285-313 amino acids from the Central region of human PAX8.

Dilution

FC~~1:10~50

IHC-P~~1:10~50

WB~~1:1000

E~~Use at an assay dependent concentration.

Format

Purified polyclonal antibody supplied in PBS with 0.09% (W/V) sodium azide. This antibody is purified through a protein A column, followed by peptide affinity purification.

Storage

Maintain refrigerated at 2-8°C for up to 2 weeks. For long term storage store at -20°C in small aliquots to prevent freeze-thaw cycles.

Precautions

PAX8 Antibody (Center) is for research use only and not for use in diagnostic or therapeutic procedures.

PAX8 Antibody (Center) - Protein Information

Name PAX8

Function Transcription factor for the thyroid-specific expression of the genes exclusively expressed in the thyroid cell type, maintaining the functional differentiation of such cells.

Cellular Location

Nucleus.

Tissue Location

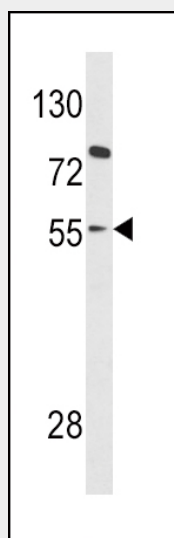
Expressed in the excretory system, thyroid gland and Wilms tumors

PAX8 Antibody (Center) - Protocols

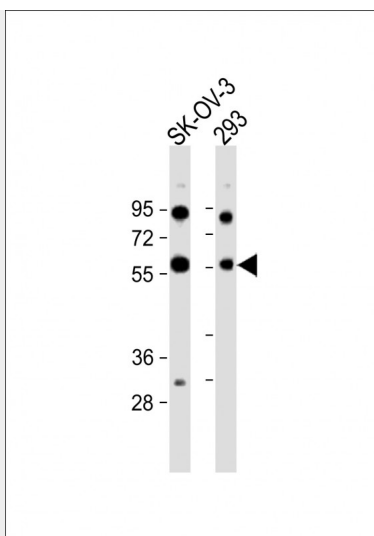
Provided below are standard protocols that you may find useful for product applications.

- [Western Blot](#)
- [Blocking Peptides](#)
- [Dot Blot](#)
- [Immunohistochemistry](#)
- [Immunofluorescence](#)
- [Immunoprecipitation](#)
- [Flow Cytometry](#)
- [Cell Culture](#)

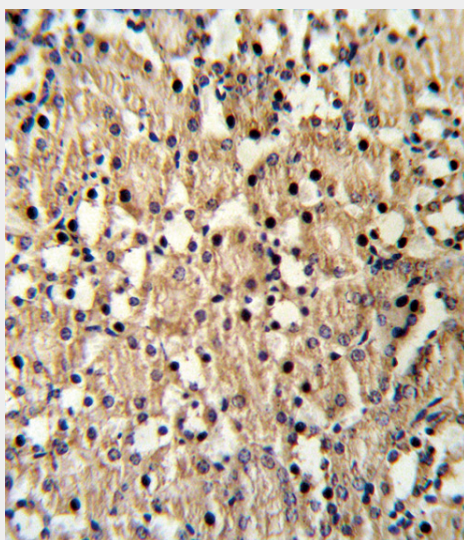
PAX8 Antibody (Center) - Images



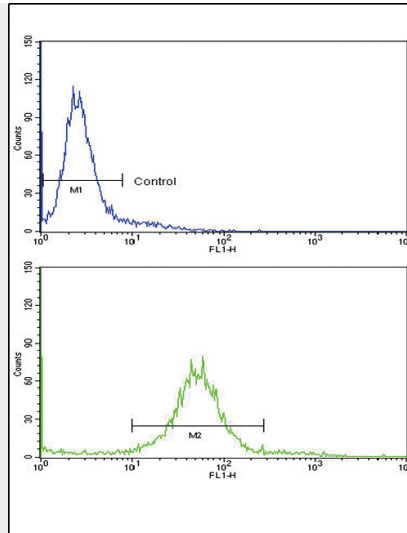
Western blot analysis of PAX8 Antibody (Center) (Cat. #AP6874c) in HL-60 cell line lysates (35ug/lane). PAX8 (arrow) was detected using the purified Pab.



All lanes : Anti-PAX8 Antibody (Center) at 1:1000 dilution Lane 1: SK-OV-3 whole cell lysate Lane 2: 293 whole cell lysate Lysates/proteins at 20 μ g per lane. Secondary Goat Anti-Rabbit IgG, (H+L), Peroxidase conjugated at 1/10000 dilution. Predicted band size : 48 kDa Blocking/Dilution buffer: 5% NFDM/TBST.



Formalin-fixed and paraffin-embedded mouse kidney reacted with PAX8 Antibody (Center), which was peroxidase-conjugated to the secondary antibody, followed by DAB staining. This data demonstrates the use of this antibody for immunohistochemistry; clinical relevance has not been evaluated.



Flow cytometric analysis of 293 cells using PAX8 Antibody (Center)(bottom histogram) compared to a negative control cell (top histogram). FITC-conjugated goat-anti-rabbit secondary antibodies were used for the analysis.

PAX8 Antibody (Center) - Background

PAX8 is a member of the paired box (PAX) family of transcription factors. Members of this family contain a paired box domain, an octapeptide, and a paired-type homeodomain. This nuclear protein is involved in thyroid follicular cell development and expression of thyroid-specific genes.

PAX8 Antibody (Center) - References

Ramos,H.E., et.al., Thyroid 19 (1), 61-68 (2009)