

Cables1 Polyclonal Antibody
Catalog # AP68771**Specification**

Cables1 Polyclonal Antibody - Product Information

Application	WB, IHC-P, IF
Primary Accession	Q8TDN4
Reactivity	Human, Mouse
Host	Rabbit
Clonality	Polyclonal

Cables1 Polyclonal Antibody - Additional Information**Gene ID** 91768**Other Names**

CABLES1; CABLES; CDK5 and ABL1 enzyme substrate 1; Interactor with CDK3 1; Ik3-1

Dilution

WB~~Western Blot: 1/500 - 1/2000. Immunohistochemistry: 1/100 - 1/300. Immunofluorescence: 1/200 - 1/1000. ELISA: 1/20000. Not yet tested in other applications.

IHC-P~~N/A

IF~~1:50~200

Format

Liquid in PBS containing 50% glycerol, 0.5% BSA and 0.09% (W/V) sodium azide.

Storage Conditions

-20°C

Cables1 Polyclonal Antibody - Protein Information**Name** CABLES1**Synonyms** CABLES**Function**

Cyclin-dependent kinase binding protein. Enhances cyclin- dependent kinase tyrosine phosphorylation by nonreceptor tyrosine kinases, such as that of CDK5 by activated ABL1, which leads to increased CDK5 activity and is critical for neuronal development, and that of CDK2 by WEE1, which leads to decreased CDK2 activity and growth inhibition. Positively affects neuronal outgrowth. Plays a role as a regulator for p53/p73-induced cell death (By similarity).

Cellular Location

Nucleus. Cytoplasm. Note=Located in the cell body and proximal region of the developing axonal shaft of immature neurons. Located in axonal growth cone, but not in the distal part of the axon shaft or in dendritic growth cone of mature neurons (By similarity).

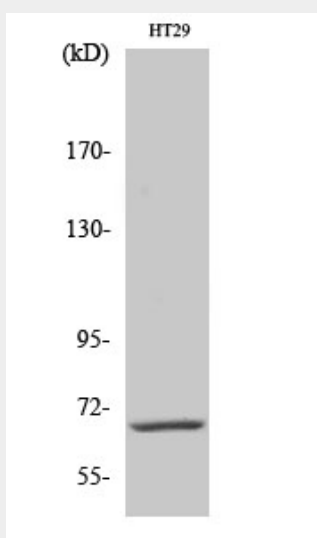
Tissue Location

Expressed in breast, pancreas, colon, head and neck (at protein level). Strongly decreased in more than half of cases of atypical endometrial hyperplasia and in more than 90% of endometrial cancers.

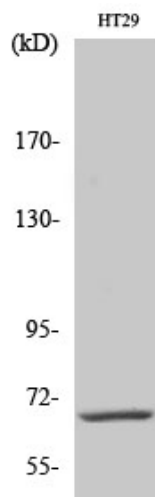
Cables1 Polyclonal Antibody - Protocols

Provided below are standard protocols that you may find useful for product applications.

- [Western Blot](#)
- [Blocking Peptides](#)
- [Dot Blot](#)
- [Immunohistochemistry](#)
- [Immunofluorescence](#)
- [Immunoprecipitation](#)
- [Flow Cytometry](#)
- [Cell Culture](#)

Cables1 Polyclonal Antibody - Images

Western Blot analysis of various cells using Cables1 Polyclonal Antibody diluted at 1:500



Western Blot analysis of various cells using Cables1 Polyclonal Antibody diluted at 1:500

Cables1 Polyclonal Antibody - Background

Cyclin-dependent kinase binding protein. Enhances cyclin-dependent kinase tyrosine phosphorylation by nonreceptor tyrosine kinases, such as that of CDK5 by activated ABL1, which leads to increased CDK5 activity and is critical for neuronal development, and that of CDK2 by WEE1, which leads to decreased CDK2 activity and growth inhibition. Positively affects neuronal outgrowth. Plays a role as a regulator for p53/p73-induced cell death (By similarity).