

Cadherin-19 Polyclonal Antibody
Catalog # AP68779**Specification**

Cadherin-19 Polyclonal Antibody - Product Information

Application	WB
Primary Accession	Q9H159
Reactivity	Human
Host	Rabbit
Clonality	Polyclonal

Cadherin-19 Polyclonal Antibody - Additional Information**Gene ID** 28513**Other Names**

CDH19; CDH7L2; Cadherin-19

Dilution

WB~~Western Blot: 1/500 - 1/2000. Immunohistochemistry: 1/100 - 1/300. Immunofluorescence: 1/200 - 1/1000. ELISA: 1/20000. Not yet tested in other applications.

Format

Liquid in PBS containing 50% glycerol, 0.5% BSA and 0.09% (W/V) sodium azide.

Storage Conditions

-20°C

Cadherin-19 Polyclonal Antibody - Protein Information**Name** CDH19**Synonyms** CDH7L2**Function**

Cadherins are calcium-dependent cell adhesion proteins. They preferentially interact with themselves in a homophilic manner in connecting cells; cadherins may thus contribute to the sorting of heterogeneous cell types.

Cellular Location

Cell membrane; Single-pass type I membrane protein

Tissue Location

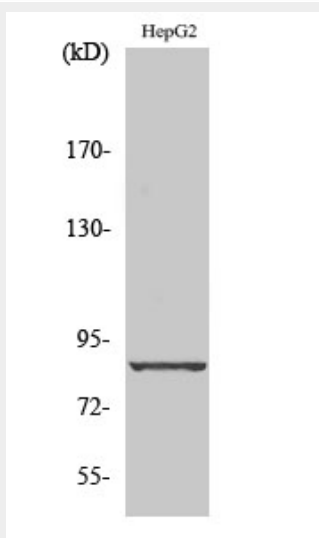
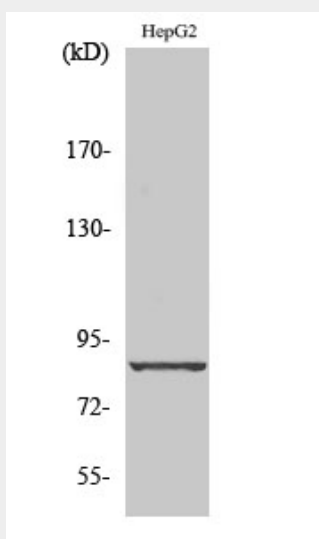
Expressed in many tissues, with the exception of uterus

Cadherin-19 Polyclonal Antibody - Protocols

Provided below are standard protocols that you may find useful for product applications.

- [Western Blot](#)
- [Blocking Peptides](#)
- [Dot Blot](#)
- [Immunohistochemistry](#)
- [Immunofluorescence](#)
- [Immunoprecipitation](#)
- [Flow Cytometry](#)
- [Cell Culture](#)

Cadherin-19 Polyclonal Antibody - Images



Cadherin-19 Polyclonal Antibody - Background

Cadherins are calcium-dependent cell adhesion proteins. They preferentially interact with themselves in a homophilic manner in connecting cells; cadherins may thus contribute to the sorting of heterogeneous cell types.