

CAF-1 p60 Polyclonal Antibody
Catalog # AP68788**Specification**

CAF-1 p60 Polyclonal Antibody - Product Information

Application	WB, IHC-P, IF
Primary Accession	Q13112
Reactivity	Human, Mouse, Rat
Host	Rabbit
Clonality	Polyclonal

CAF-1 p60 Polyclonal Antibody - Additional Information**Gene ID** 8208**Other Names**

CHAF1B; CAF1A; CAF1P60; MPHOSPH7; MPP7; Chromatin assembly factor 1 subunit B; CAF-1 subunit B; Chromatin assembly factor I p60 subunit; CAF-I 60 kDa subunit; CAF-I p60; M-phase phosphoprotein 7

Dilution

WB~~Western Blot: 1/500 - 1/2000. Immunohistochemistry: 1/100 - 1/300. Immunofluorescence: 1/200 - 1/1000. ELISA: 1/20000. Not yet tested in other applications.
IHC-P~~N/A
IF~~1:50~200

Format

Liquid in PBS containing 50% glycerol, 0.5% BSA and 0.09% (W/V) sodium azide.

Storage Conditions

-20°C

CAF-1 p60 Polyclonal Antibody - Protein Information**Name** CHAF1B ([HGNC:1911](#))**Function**

Acts as a component of the histone chaperone complex chromatin assembly factor 1 (CAF-1), which assembles histone octamers onto DNA during replication and repair. CAF-1 performs the first step of the nucleosome assembly process, bringing newly synthesized histones H3 and H4 to replicating DNA; histones H2A/H2B can bind to this chromatin precursor subsequent to DNA replication to complete the histone octamer.

Cellular Location

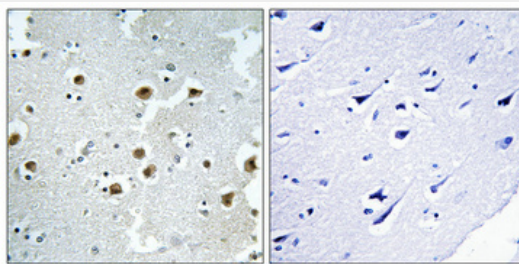
Nucleus. Cytoplasm. Note=DNA replication foci. Cytoplasmic in M phase

CAF-1 p60 Polyclonal Antibody - Protocols

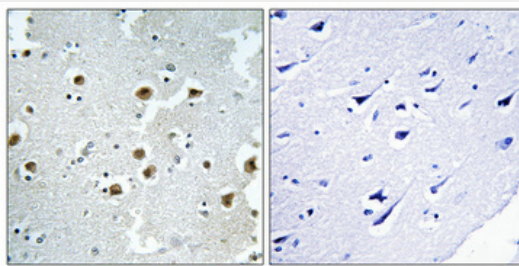
Provided below are standard protocols that you may find useful for product applications.

- [Western Blot](#)
- [Blocking Peptides](#)
- [Dot Blot](#)
- [Immunohistochemistry](#)
- [Immunofluorescence](#)
- [Immunoprecipitation](#)
- [Flow Cytometry](#)
- [Cell Culture](#)

CAF-1 p60 Polyclonal Antibody - Images



Immunohistochemical analysis of paraffin-embedded Human brain. Antibody was diluted at 1:100(4°,overnight). High-pressure and temperature Tris-EDTA,pH8.0 was used for antigen retrieval. Negative contrl (right) obtaned from antibody was pre-absorbed by immunogen peptide.



Immunohistochemical analysis of paraffin-embedded Human brain. Antibody was diluted at 1:100(4°,overnight). High-pressure and temperature Tris-EDTA,pH8.0 was used for antigen retrieval. Negative contrl (right) obtaned from antibody was pre-absorbed by immunogen peptide.

CAF-1 p60 Polyclonal Antibody - Background

Complex that is thought to mediate chromatin assembly in DNA replication and DNA repair. Assembles histone octamers onto replicating DNA in vitro. CAF-1 performs the first step of the nucleosome assembly process, bringing newly synthesized histones H3 and H4 to replicating DNA; histones H2A/H2B can bind to this chromatin precursor subsequent to DNA replication to complete the histone octamer.