

**Calpain 12 Polyclonal Antibody**  
Catalog # AP68799**Specification**

---

**Calpain 12 Polyclonal Antibody - Product Information**

Application	WB
Primary Accession	<a href="#">Q6ZSI9</a>
Reactivity	Human
Host	Rabbit
Clonality	Polyclonal

**Calpain 12 Polyclonal Antibody - Additional Information****Gene ID** 147968**Other Names**

CAPN12; Calpain-12; Calcium-activated neutral proteinase 12; CANP 12

**Dilution**

WB~~Western Blot: 1/500 - 1/2000. ELISA: 1/5000. Not yet tested in other applications.

**Format**

Liquid in PBS containing 50% glycerol, 0.5% BSA and 0.09% (W/V) sodium azide.

**Storage Conditions**

-20°C

**Calpain 12 Polyclonal Antibody - Protein Information****Name** CAPN12**Function**

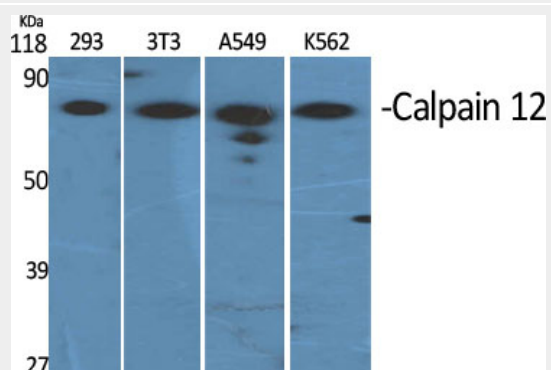
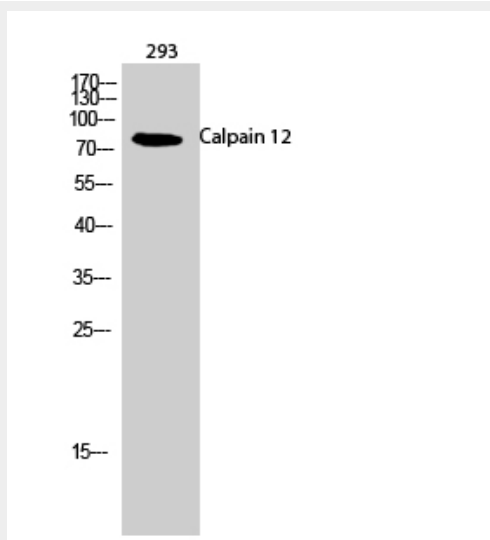
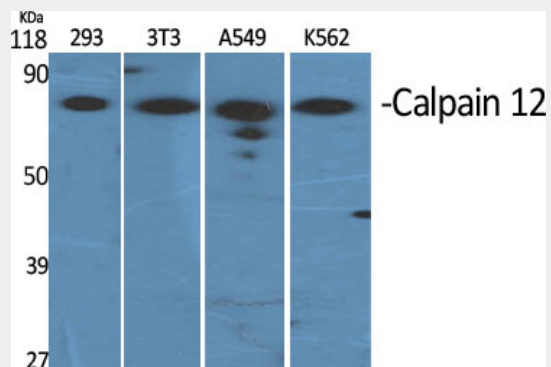
Calcium-regulated non-lysosomal thiol-protease.

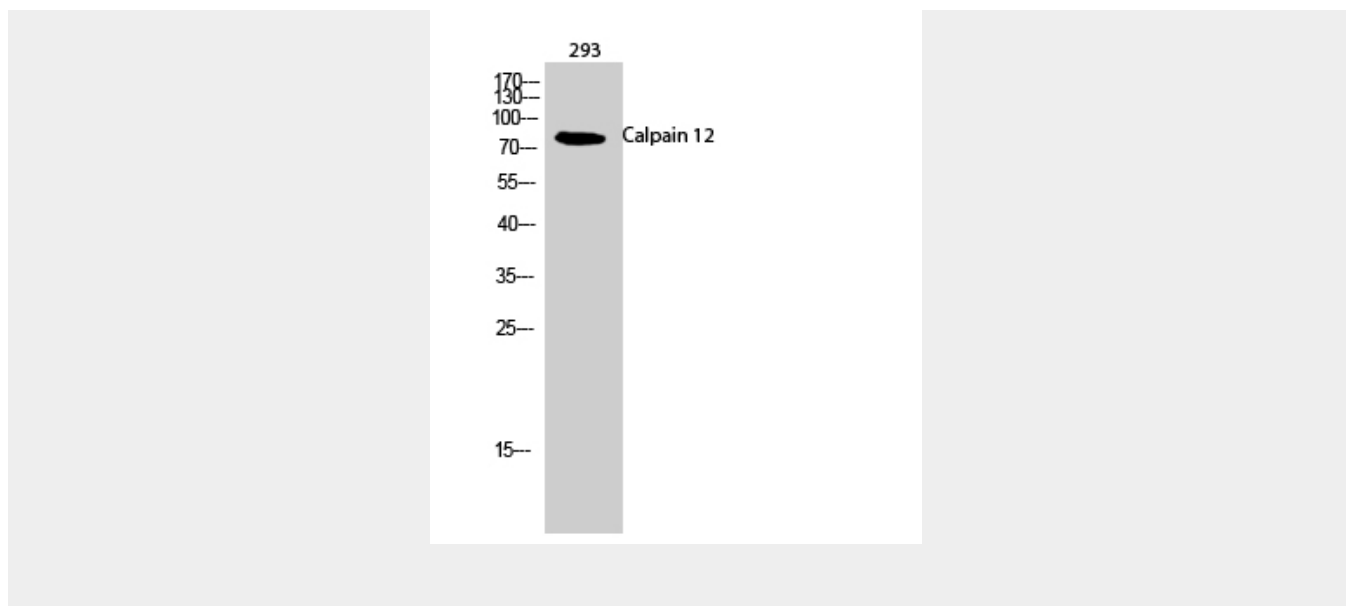
**Calpain 12 Polyclonal Antibody - Protocols**

Provided below are standard protocols that you may find useful for product applications.

- [Western Blot](#)
- [Blocking Peptides](#)
- [Dot Blot](#)
- [Immunohistochemistry](#)
- [Immunofluorescence](#)
- [Immunoprecipitation](#)
- [Flow Cytometry](#)
- [Cell Culture](#)

### Calpain 12 Polyclonal Antibody - Images





### Calpain 12 Polyclonal Antibody - Background

Calcium-regulated non-lysosomal thiol-protease.