

Casein Kinase Iγ1 Polyclonal Antibody
Catalog # AP68830**Specification**

Casein Kinase Iγ1 Polyclonal Antibody - Product Information

Application	WB
Primary Accession	Q9HCP0
Reactivity	Human, Mouse, Rat, Monkey
Host	Rabbit
Clonality	Polyclonal

Casein Kinase Iγ1 Polyclonal Antibody - Additional Information**Gene ID** 53944**Other Names**

CSNK1G1; Casein kinase I isoform gamma-1; CKI-gamma 1

Dilution

WB~~Western Blot: 1/500 - 1/2000. Immunohistochemistry: 1/100 - 1/300. Immunofluorescence: 1/200 - 1/1000. ELISA: 1/20000. Not yet tested in other applications.

Format

Liquid in PBS containing 50% glycerol, 0.5% BSA and 0.09% (W/V) sodium azide.

Storage Conditions

-20°C

Casein Kinase Iγ1 Polyclonal Antibody - Protein Information**Name** CSNK1G1**Function**

Serine/threonine-protein kinase. Casein kinases are operationally defined by their preferential utilization of acidic proteins such as caseins as substrates. It can phosphorylate a large number of proteins. Participates in Wnt signaling. Regulates fast synaptic transmission mediated by glutamate (By similarity). Phosphorylates CLSPN.

Cellular Location

Cytoplasm.

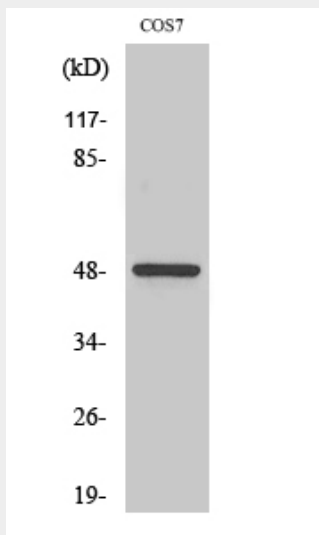
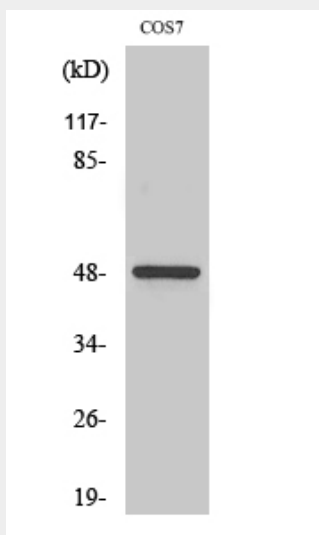
Casein Kinase Iγ1 Polyclonal Antibody - Protocols

Provided below are standard protocols that you may find useful for product applications.

- [Western Blot](#)

- [Blocking Peptides](#)
- [Dot Blot](#)
- [Immunohistochemistry](#)
- [Immunofluorescence](#)
- [Immunoprecipitation](#)
- [Flow Cytometry](#)
- [Cell Culture](#)

Casein Kinase Iy1 Polyclonal Antibody - Images



Casein Kinase Iy1 Polyclonal Antibody - Background

Serine/threonine-protein kinase. Casein kinases are operationally defined by their preferential utilization of acidic proteins such as caseins as substrates. It can phosphorylate a large number of proteins. Participates in Wnt signaling. Regulates fast synaptic transmission mediated by glutamate (By similarity). Phosphorylates CLSPN.