

**DLX2 Antibody (Center)**  
**Affinity Purified Rabbit Polyclonal Antibody (Pab)**  
**Catalog # AP6884C****Specification**

---

**DLX2 Antibody (Center) - Product Information**

Application	IHC-P, WB,E
Primary Accession	<a href="#">Q07687</a>
Reactivity	Human
Host	Rabbit
Clonality	Polyclonal
Isotype	Rabbit IgG
Calculated MW	34243
Antigen Region	194-222

**DLX2 Antibody (Center) - Additional Information****Gene ID** 1746**Other Names**

Homeobox protein DLX-2, DLX2

**Target/Specificity**

This DLX2 antibody is generated from rabbits immunized with a KLH conjugated synthetic peptide between 194-222 amino acids from the Central region of human DLX2.

**Dilution**

IHC-P~~1:50~100

WB~~1:1000

E~~Use at an assay dependent concentration.

**Format**

Purified polyclonal antibody supplied in PBS with 0.09% (W/V) sodium azide. This antibody is purified through a protein A column, followed by peptide affinity purification.

**Storage**

Maintain refrigerated at 2-8°C for up to 2 weeks. For long term storage store at -20°C in small aliquots to prevent freeze-thaw cycles.

**Precautions**

DLX2 Antibody (Center) is for research use only and not for use in diagnostic or therapeutic procedures.

**DLX2 Antibody (Center) - Protein Information****Name** DLX2**Function** Acts as a transcriptional activator (By similarity). Activates transcription of

CGA/alpha-GSU, via binding to the downstream activin regulatory element (DARE) in the gene promoter (By similarity). Plays a role in terminal differentiation of interneurons, such as amacrine and bipolar cells in the developing retina. Likely to play a regulatory role in the development of the ventral forebrain (By similarity). May play a role in craniofacial patterning and morphogenesis (By similarity).

#### Cellular Location

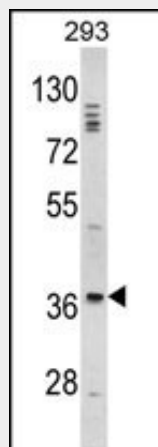
Nucleus.

#### DLX2 Antibody (Center) - Protocols

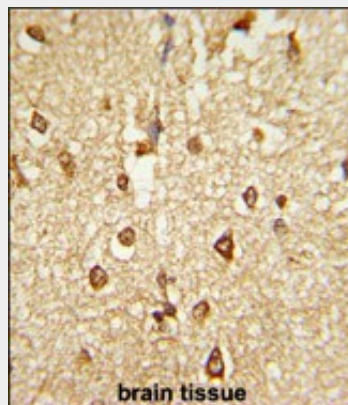
Provided below are standard protocols that you may find useful for product applications.

- [Western Blot](#)
- [Blocking Peptides](#)
- [Dot Blot](#)
- [Immunohistochemistry](#)
- [Immunofluorescence](#)
- [Immunoprecipitation](#)
- [Flow Cytometry](#)
- [Cell Culture](#)

#### DLX2 Antibody (Center) - Images



Western blot analysis of DLX2 Antibody (Center) (Cat. #AP6884c) in 293 cell line lysates (35ug/lane). DLX2 (arrow) was detected using the purified Pab.



Formalin-fixed and paraffin-embedded human brain tissue reacted with DLX2 Antibody (Center), which was peroxidase-conjugated to the secondary antibody, followed by DAB staining. This data demonstrates the use of this antibody for immunohistochemistry; clinical relevance has not been evaluated.

#### **DLX2 Antibody (Center) - Background**

DLX2 is likely to play a regulatory role in the development of the ventral forebrain. It may play a role in craniofacial patterning and morphogenesis.

Subcellular location: Nucleus (Potential).

#### **DLX2 Antibody (Center) - References**

Yerges,L.M., et.al., J. Bone Miner. Res. (2009)

##### **DLX2 Antibody (Center) - Citations**

- [DLX2 activates Wnt1 transcription and mediates Wnt/ \$\beta\$ -catenin signal to promote osteogenic differentiation of hBMSCs](#)
- [Inhibitory effect of Phalaenopsis orchid extract on WNT1-induced immature melanocyte precursor differentiation in a novel in vitro solar lentigo model.](#)