

CB2 Polyclonal Antibody
Catalog # AP68871**Specification**

CB2 Polyclonal Antibody - Product Information

Application	WB, IF
Primary Accession	P34972
Reactivity	Human
Host	Rabbit
Clonality	Polyclonal

CB2 Polyclonal Antibody - Additional Information**Gene ID** 1269**Other Names**

CNR2; Cannabinoid receptor 2; CB-2; CB2; hCB2; CX5

Dilution

WB~~Western Blot: 1/500 - 1/2000. Immunofluorescence: 1/200 - 1/1000. ELISA: 1/5000. Not yet tested in other applications.

IF~~1:50~200

Format

Liquid in PBS containing 50% glycerol, 0.5% BSA and 0.09% (W/V) sodium azide.

Storage Conditions

-20°C

CB2 Polyclonal Antibody - Protein Information**Name** CNR2**Synonyms** CB2A, CB2B**Function**

Heterotrimeric G protein-coupled receptor for endocannabinoid 2-arachidonoylglycerol mediating inhibition of adenylate cyclase. May function in inflammatory response, nociceptive transmission and bone homeostasis.

Cellular Location

Cell membrane; Multi-pass membrane protein. Cell projection, dendrite. Perikaryon Note=Localizes to apical dendrite of pyramidal neurons.

Tissue Location

Preferentially expressed in cells of the immune system with higher expression in B-cells and NK cells (at protein level). Expressed in skin in suprabasal layers and hair follicles (at protein level). Highly expressed in tonsil and to a lower extent in spleen, peripheral blood mononuclear cells, and

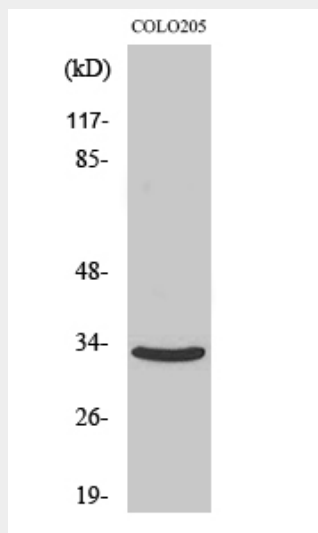
thymus. PubMed:14657172 could not detect expression in normal brain. Expressed in brain by perivascular microglial cells and dorsal root ganglion sensory neurons (at protein level). Two isoforms are produced by alternative promoter usage and differ only in the 5' UTR: isoform CB2A is observed predominantly in testis with some expression in brain, while isoform CB2B is predominant in spleen and leukocytes

CB2 Polyclonal Antibody - Protocols

Provided below are standard protocols that you may find useful for product applications.

- [Western Blot](#)
- [Blocking Peptides](#)
- [Dot Blot](#)
- [Immunohistochemistry](#)
- [Immunofluorescence](#)
- [Immunoprecipitation](#)
- [Flow Cytometry](#)
- [Cell Culture](#)

CB2 Polyclonal Antibody - Images



Western Blot analysis of various cells using CB2 Polyclonal Antibody

CB2 Polyclonal Antibody - Background

Heterotrimeric G protein-coupled receptor for endocannabinoid 2-arachidonoylglycerol mediating inhibition of adenylate cyclase. May function in inflammatory response, nociceptive transmission and bone homeostasis.