

**RS18 Antibody (Center)**  
**Affinity Purified Rabbit Polyclonal Antibody (Pab)**  
**Catalog # AP6887c****Specification**

---

**RS18 Antibody (Center) - Product Information**

Application	IHC-P, WB, FC, IF, IHC-P-Leica,E
Primary Accession	<a href="#">P62269</a>
Other Accession	<a href="#">P62271</a> , <a href="#">P62272</a> , <a href="#">P62270</a> , <a href="#">Q3T0R1</a> , <a href="#">G1TPG3</a>
Reactivity	Human, Mouse, Rat
Predicted	Bovine, Pig, Rabbit
Host	Rabbit
Clonality	Polyclonal
Isotype	Rabbit IgG
Antigen Region	62-91

**RS18 Antibody (Center) - Additional Information****Gene ID** 6222**Other Names**

40S ribosomal protein S18, Ke-3, Ke3, RPS18, D6S218E

**Target/Specificity**

This RS18 antibody is generated from rabbits immunized with a KLH conjugated synthetic peptide between 62-91 amino acids from the Central region of human RS18.

**Dilution**

IHC-P~~1:100

WB~~1:1000

FC~~1:25

IF~~1:25

IHC-P-Leica~~1:500

E~~Use at an assay dependent concentration.

**Format**

Purified polyclonal antibody supplied in PBS with 0.09% (W/V) sodium azide. This antibody is purified through a protein A column, followed by peptide affinity purification.

**Storage**

Maintain refrigerated at 2-8°C for up to 2 weeks. For long term storage store at -20°C in small aliquots to prevent freeze-thaw cycles.

**Precautions**

RS18 Antibody (Center) is for research use only and not for use in diagnostic or therapeutic procedures.

**RS18 Antibody (Center) - Protein Information**

**Name** RPS18

**Synonyms** D6S218E

**Function** Component of the small ribosomal subunit. The ribosome is a large ribonucleoprotein complex responsible for the synthesis of proteins in the cell.

**Cellular Location**

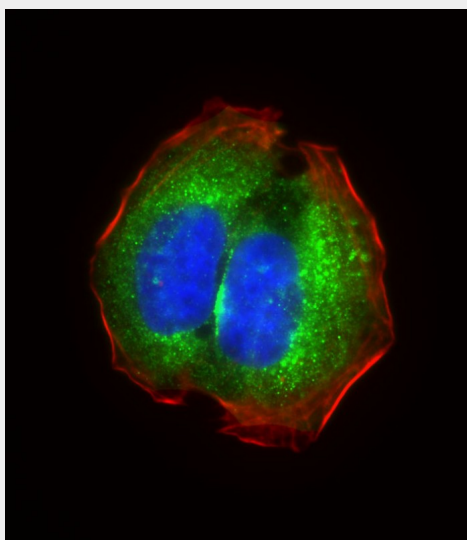
Cytoplasm.

### RS18 Antibody (Center) - Protocols

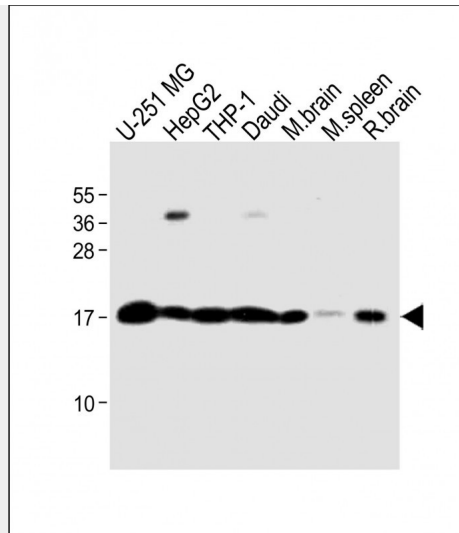
Provided below are standard protocols that you may find useful for product applications.

- [Western Blot](#)
- [Blocking Peptides](#)
- [Dot Blot](#)
- [Immunohistochemistry](#)
- [Immunofluorescence](#)
- [Immunoprecipitation](#)
- [Flow Cytometry](#)
- [Cell Culture](#)

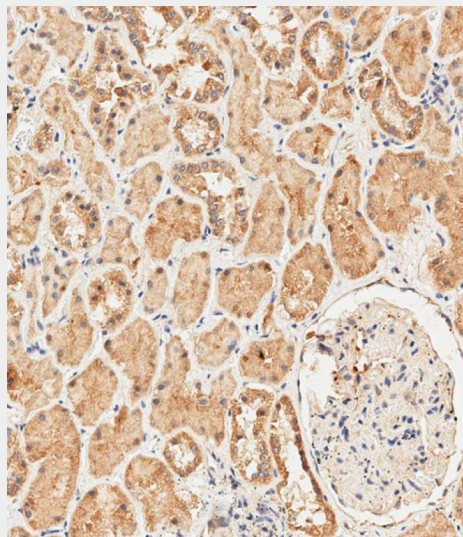
### RS18 Antibody (Center) - Images



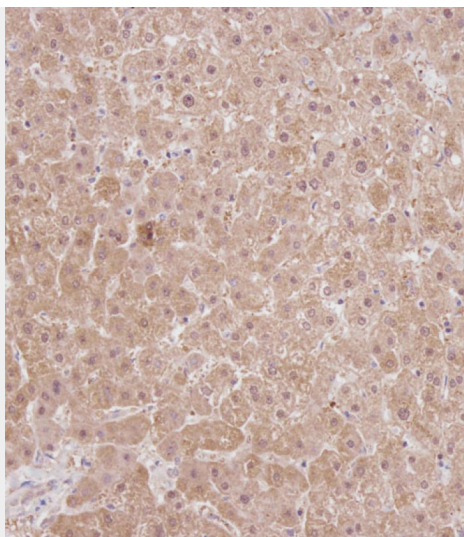
Immunofluorescent analysis of 4% paraformaldehyde-fixed, 0.1% Triton X-100 permeabilized U-2OS cells labeling RPS18 with AP6887C at 1/25 dilution, followed by Dylight® 488-conjugated goat anti-Rabbit IgG (OH191631) secondary antibody at 1/200 dilution (green). Immunofluorescence image showing cytoplasm staining on U-2OS cell line. Cytoplasmic actin is detected with Dylight® 554 Phalloidin (1186255) at 1/500 dilution (red). The nuclear counter stain is DAPI (blue).



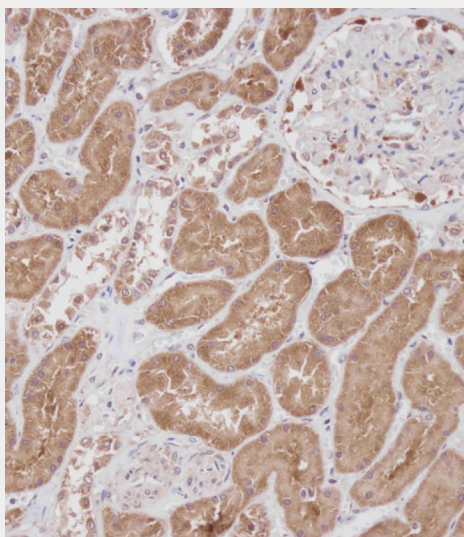
All lanes : Anti-RS18 Antibody (Center) at 1:1000 dilution Lane 1: U-251 MG whole cell lysate Lane 2: HepG2 whole cell lysate Lane 3: THP-1 whole cell lysate Lane 4: Daudi whole cell lysate Lane 5: Mouse brain lysate Lane 6: Mouse spleen lysate Lane 7: Rat brain lysate Lysates/proteins at 20  $\mu$ g per lane. Secondary Goat Anti-Rabbit IgG, (H+L), Peroxidase conjugated at 1/10000 dilution. Predicted band size : 18 kDa Blocking/Dilution buffer: 5% NFDm/TBST.



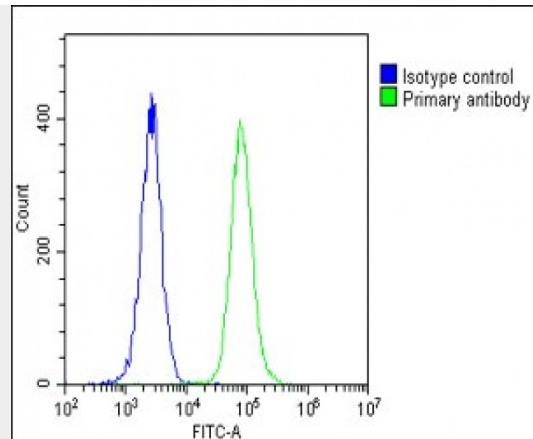
Immunohistochemical analysis of paraffin-embedded human kidney tissue using AP6887C performed on the Leica® BOND RXm. Samples were incubated with primary antibody(1/500) for 1 hours at room temperature. A undiluted biotinylated CRF Anti-Polyvalent HRP Polymer antibody was used as the secondary antibody.



Immunohistochemical analysis of AP6887C on paraffin-embedded Human liver tissue. Tissue was fixed with formaldehyde at room temperature. Heat induced epitope retrieval was performed by EDTA buffer (pH9.0). Samples were incubated with primary antibody(1:100) for 1 hour at room temperature. Undiluted CRF Anti-Polyvalent HRP Polymer antibody was used as the secondary antibody.



Immunohistochemical analysis of AP6887C on paraffin-embedded Human kidney tissue. Tissue was fixed with formaldehyde at room temperature. Heat induced epitope retrieval was performed by EDTA buffer (pH9.0). Samples were incubated with primary antibody(1:100) for 1 hour at room temperature. Undiluted CRF Anti-Polyvalent HRP Polymer antibody was used as the secondary antibody.



Overlay histogram showing U-2 OS cells stained with AP6887C (green line). The cells were fixed with 2% paraformaldehyde (10 min) and then permeabilized with 90% methanol for 10 min. The cells were then incubated in 2% bovine serum albumin to block non-specific protein-protein interactions followed by the antibody (AP6887C, 1:25 dilution) for 60 min at 37°C. The secondary antibody used was Goat-Anti-Rabbit IgG, DyLight® 488 Conjugated Highly Cross-Adsorbed (1583138) at 1/200 dilution for 40 min at 37°C. Isotype control antibody (blue line) was rabbit IgG1 (1 µg/1x10<sup>6</sup> cells) used under the same conditions. Acquisition of >10,000 events was performed.

#### RS18 Antibody (Center) - Background

Ribosomes, the organelles that catalyze protein synthesis, consist of a small 40S subunit and a large 60S subunit. Together these subunits are composed of 4 RNA species and approximately 80 structurally distinct proteins. This protein is a ribosomal protein that is a component of the 40S subunit. The protein belongs to the S13P family of ribosomal proteins. It is located in the cytoplasm.

#### RS18 Antibody (Center) - References

Yu, Y., Ji, H., et al., Protein Sci. 14 (6), 1438-1446 (2005)