

**CCP2 Polyclonal Antibody**  
**Catalog # AP68892****Specification**

---

**CCP2 Polyclonal Antibody - Product Information**

Application	WB
Primary Accession	<a href="#">Q5U5Z8</a>
Reactivity	Human, Mouse
Host	Rabbit
Clonality	Polyclonal

**CCP2 Polyclonal Antibody - Additional Information****Gene ID** 79841**Other Names**

AGBL2; CCP2; Cytosolic carboxypeptidase 2; ATP/GTP-binding protein-like 2

**Dilution**

WB~~Western Blot: 1/500 - 1/2000. Immunohistochemistry: 1/100 - 1/300. ELISA: 1/40000. Not yet tested in other applications.

**Format**

Liquid in PBS containing 50% glycerol, 0.5% BSA and 0.09% (W/V) sodium azide.

**Storage Conditions**

-20°C

**CCP2 Polyclonal Antibody - Protein Information****Name** AGBL2 ([HGNC:26296](#))**Function**

Metalloprotease that mediates deglutamylation of tubulin and non-tubulin target proteins. Catalyzes the removal of polyglutamate side chains present on the gamma-carboxyl group of glutamate residues within the C-terminal tail of tubulin protein. Specifically cleaves tubulin long-side-chains, while it is not able to remove the branching point glutamate. Also catalyzes the removal of polyglutamate residues from the carboxy-terminus of non-tubulin proteins such as MYLK.

**Cellular Location**

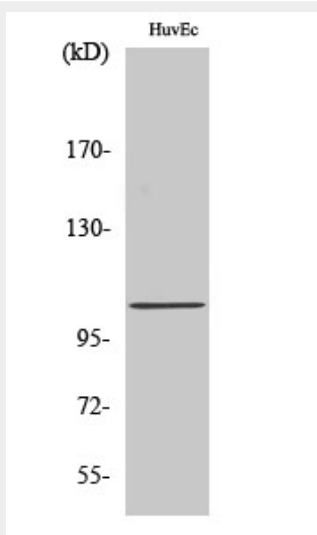
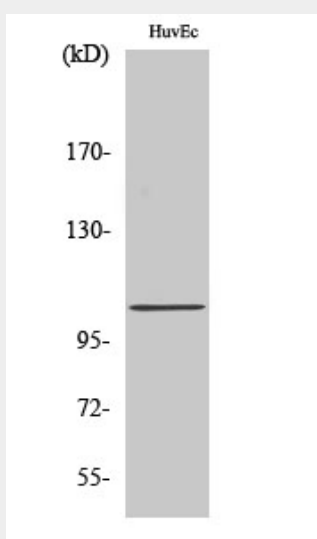
Cytoplasm, cytosol {ECO:0000250|UniProtKB:Q8CDK2}. Cytoplasm, cytoskeleton, microtubule organizing center, centrosome, centriole Cytoplasm, cytoskeleton, cilium basal body.  
Note=Colocalizes with gamma-tubulin in the centrioles and with glutamylated tubulin in the basal bodies of ciliated cells.

## CCP2 Polyclonal Antibody - Protocols

Provided below are standard protocols that you may find useful for product applications.

- [Western Blot](#)
- [Blocking Peptides](#)
- [Dot Blot](#)
- [Immunohistochemistry](#)
- [Immunofluorescence](#)
- [Immunoprecipitation](#)
- [Flow Cytometry](#)
- [Cell Culture](#)

## CCP2 Polyclonal Antibody - Images



## CCP2 Polyclonal Antibody - Background

Metalloprotease that mediates deglutamylation of target proteins. Catalyzes the

deglutamylation of polyglutamate side chains generated by post-translational polyglutamylation in proteins such as tubulins. Also removes gene-encoded polyglutamates from the carboxy-terminus of target proteins such as MYLK. Does not show de tyrosinase or deglycylase activities from the carboxy-terminus of tubulin.