

**CCRL2 Polyclonal Antibody**  
**Catalog # AP68897****Specification**

---

**CCRL2 Polyclonal Antibody - Product Information**

Application	WB, IF
Primary Accession	<a href="#">O00421</a>
Reactivity	Human
Host	Rabbit
Clonality	Polyclonal

**CCRL2 Polyclonal Antibody - Additional Information****Gene ID** 9034**Other Names**

CCRL2; CCR11; CCR6; CKRX; CRAM; HCR; C-C chemokine receptor-like 2; Chemokine receptor CCR11; Chemokine receptor X; Putative MCP-1 chemokine receptor

**Dilution**

WB~~Western Blot: 1/500 - 1/2000. Immunofluorescence: 1/200 - 1/1000. ELISA: 1/20000. Not yet tested in other applications.

IF~~1:50~200

**Format**

Liquid in PBS containing 50% glycerol, 0.5% BSA and 0.09% (W/V) sodium azide.

**Storage Conditions**

-20°C

**CCRL2 Polyclonal Antibody - Protein Information****Name** CCRL2**Synonyms** CCR11, CCR6, CKRX, CRAM, HCR**Function**

Receptor for CCL19 and chemerin/RARRES2. Does not appear to be a signaling receptor, but may have a role in modulating chemokine- triggered immune responses by capturing and internalizing CCL19 or by presenting RARRES2 ligand to CMKLR1, a functional signaling receptors. Plays a critical role for the development of Th2 responses.

**Cellular Location**

Cell membrane; Multi-pass membrane protein

**Tissue Location**

Expressed abundantly in immunal tissues such as spleen, fetal liver, lymph node and bone marrow. Strong expression also in lung and heart. Expressed in almost all hematopoietic cells

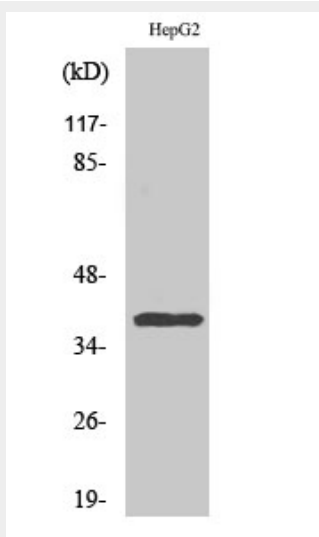
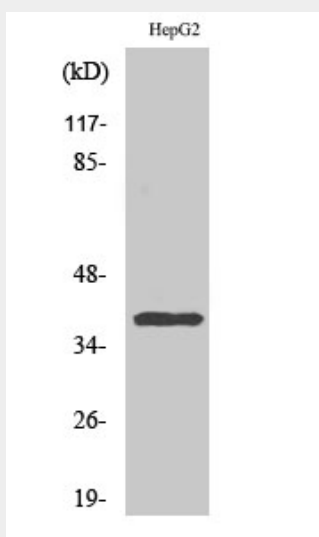
including monocytes, macrophages, PMNs, T-cells (both CD4+ and CD8+), monocyte-derived iDCs, NK cells, and CD34+ progenitor cells. B-cells expressed isoform 1 but not isoform 2. Up-regulated on synovial neutrophils of rheumatoid arthritis patients

## CCRL2 Polyclonal Antibody - Protocols

Provided below are standard protocols that you may find useful for product applications.

- [Western Blot](#)
- [Blocking Peptides](#)
- [Dot Blot](#)
- [Immunohistochemistry](#)
- [Immunofluorescence](#)
- [Immunoprecipitation](#)
- [Flow Cytometry](#)
- [Cell Culture](#)

## CCRL2 Polyclonal Antibody - Images



### **CCRL2 Polyclonal Antibody - Background**

Receptor for CCL19 and chemerin/RARRES2. Does not appear to be a signaling receptor, but may have a role in modulating chemokine-triggered immune responses by capturing and internalizing CCL19 or by presenting RARRES2 ligand to CMKLR1, a functional signaling receptors. Plays a critical role for the development of Th2 responses.

#### **CCRL2 Polyclonal Antibody - Citations**

- [Decreased IL-1 \$\beta\$ -induced CCL20 response in human iPSC-astrocytes in schizophrenia: Potential attenuating effects on recruitment of regulatory T cells](#)