

CD205 Polyclonal Antibody
Catalog # AP68921**Specification**

CD205 Polyclonal Antibody - Product Information

Application	WB
Primary Accession	O60449
Reactivity	Human
Host	Rabbit
Clonality	Polyclonal

CD205 Polyclonal Antibody - Additional Information**Gene ID** 100526664;4065**Other Names**

LY75; CD205; CLEC13B; Lymphocyte antigen 75; Ly-75; C-type lectin domain family 13 member B; DEC-205; gp200-MR6; CD antigen CD205

Dilution

WB~~Western Blot: 1/500 - 1/2000. ELISA: 1/40000. Not yet tested in other applications.

Format

Liquid in PBS containing 50% glycerol, 0.5% BSA and 0.09% (W/V) sodium azide.

Storage Conditions

-20°C

CD205 Polyclonal Antibody - Protein Information**Name** LY75**Synonyms** CD205, CLEC13B**Function**

Acts as an endocytic receptor to direct captured antigens from the extracellular space to a specialized antigen-processing compartment (By similarity). Causes reduced proliferation of B-lymphocytes.

Cellular Location

Membrane; Single-pass type I membrane protein

Tissue Location

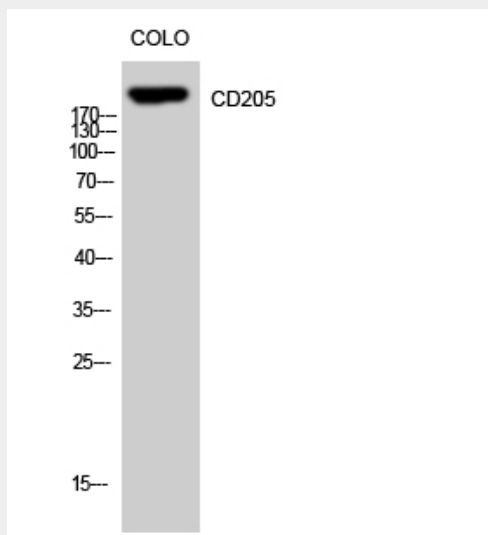
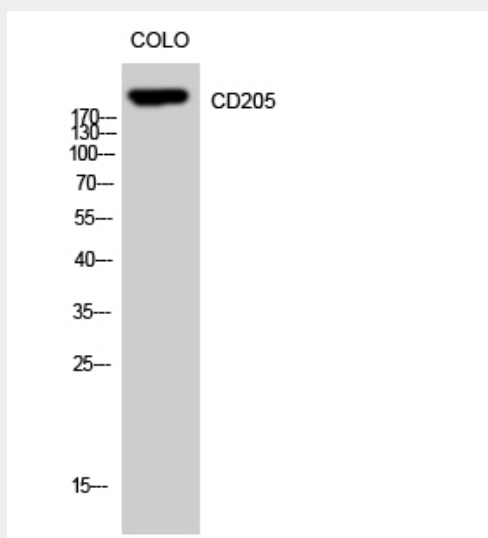
Expressed in spleen, thymus, colon and peripheral blood lymphocytes. Detected in myeloid and B-lymphoid cell lines Isoform 2 and isoform 3 are expressed in malignant Hodgkin lymphoma cells called Hodgkin and Reed-Sternberg (HRS) cells

CD205 Polyclonal Antibody - Protocols

Provided below are standard protocols that you may find useful for product applications.

- [Western Blot](#)
- [Blocking Peptides](#)
- [Dot Blot](#)
- [Immunohistochemistry](#)
- [Immunofluorescence](#)
- [Immunoprecipitation](#)
- [Flow Cytometry](#)
- [Cell Culture](#)

CD205 Polyclonal Antibody - Images



CD205 Polyclonal Antibody - Background

Acts as an endocytic receptor to direct captured antigens from the extracellular space to a

specialized antigen- processing compartment (By similarity). Causes reduced proliferation of B-lymphocytes.