

CD2BP2 Polyclonal Antibody
Catalog # AP68929**Specification**

CD2BP2 Polyclonal Antibody - Product Information

Application	WB, IHC-P
Primary Accession	O95400
Reactivity	Human, Monkey
Host	Rabbit
Clonality	Polyclonal

CD2BP2 Polyclonal Antibody - Additional Information**Gene ID** 10421**Other Names**

CD2BP2; KIAA1178; CD2 antigen cytoplasmic tail-binding protein 2; CD2 cytoplasmic domain-binding protein 2; CD2 tail-binding protein 2

Dilution

WB~~Western Blot: 1/500 - 1/2000. Immunohistochemistry: 1/100 - 1/300. ELISA: 1/40000. Not yet tested in other applications.

IHC-P~~N/A

Format

Liquid in PBS containing 50% glycerol, 0.5% BSA and 0.09% (W/V) sodium azide.

Storage Conditions

-20°C

CD2BP2 Polyclonal Antibody - Protein Information**Name** CD2BP2**Synonyms** KIAA1178**Function**

Involved in pre-mRNA splicing as component of the U5 snRNP complex that is involved in spliceosome assembly.

Cellular Location

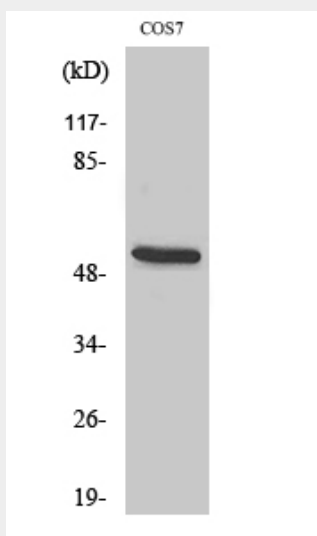
Cytoplasm. Nucleus. Note=Predominantly nuclear.

CD2BP2 Polyclonal Antibody - Protocols

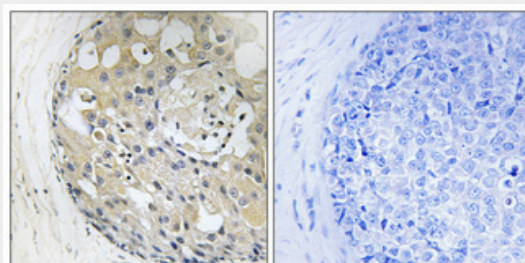
Provided below are standard protocols that you may find useful for product applications.

- [Western Blot](#)
- [Blocking Peptides](#)
- [Dot Blot](#)
- [Immunohistochemistry](#)
- [Immunofluorescence](#)
- [Immunoprecipitation](#)
- [Flow Cytometry](#)
- [Cell Culture](#)

CD2BP2 Polyclonal Antibody - Images



Western Blot analysis of various cells using CD2BP2 Polyclonal Antibody diluted at 1:1000



Immunohistochemical analysis of paraffin-embedded Human breast cancer. Antibody was diluted at 1:100 (4°C, overnight). High-pressure and temperature Tris-EDTA, pH 8.0 was used for antigen retrieval. Negative control (right) obtained from antibody was pre-absorbed by immunogen peptide.

CD2BP2 Polyclonal Antibody - Background

Involved in pre-mRNA splicing as component of the U5 snRNP complex that is involved in spliceosome assembly.