

**CD40 Polyclonal Antibody**  
Catalog # AP68946**Specification**

---

**CD40 Polyclonal Antibody - Product Information**

Application	WB
Primary Accession	<a href="#">P25942</a>
Reactivity	Human, Mouse, Monkey
Host	Rabbit
Clonality	Polyclonal

**CD40 Polyclonal Antibody - Additional Information****Gene ID** 958**Other Names**

CD40; TNFRSF5; Tumor necrosis factor receptor superfamily member 5; B-cell surface antigen CD40; Bp50; CD40L receptor; CDw40; CD antigen CD40

**Dilution**

WB~~Western Blot: 1/500 - 1/2000. Immunohistochemistry: 1/100 - 1/300. ELISA: 1/10000. Not yet tested in other applications.

**Format**

Liquid in PBS containing 50% glycerol, 0.5% BSA and 0.09% (W/V) sodium azide.

**Storage Conditions**

-20°C

**CD40 Polyclonal Antibody - Protein Information****Name** CD40**Synonyms** TNFRSF5**Function**

Receptor for TNFSF5/CD40LG (PubMed: &lt;a href="http://www.uniprot.org/citations/31331973" target="\_blank"&gt;31331973&lt;/a&gt;). Transduces TRAF6- and MAP3K8-mediated signals that activate ERK in macrophages and B cells, leading to induction of immunoglobulin secretion (By similarity).

**Cellular Location**

[Isoform I]: Cell membrane; Single-pass type I membrane protein

**Tissue Location**

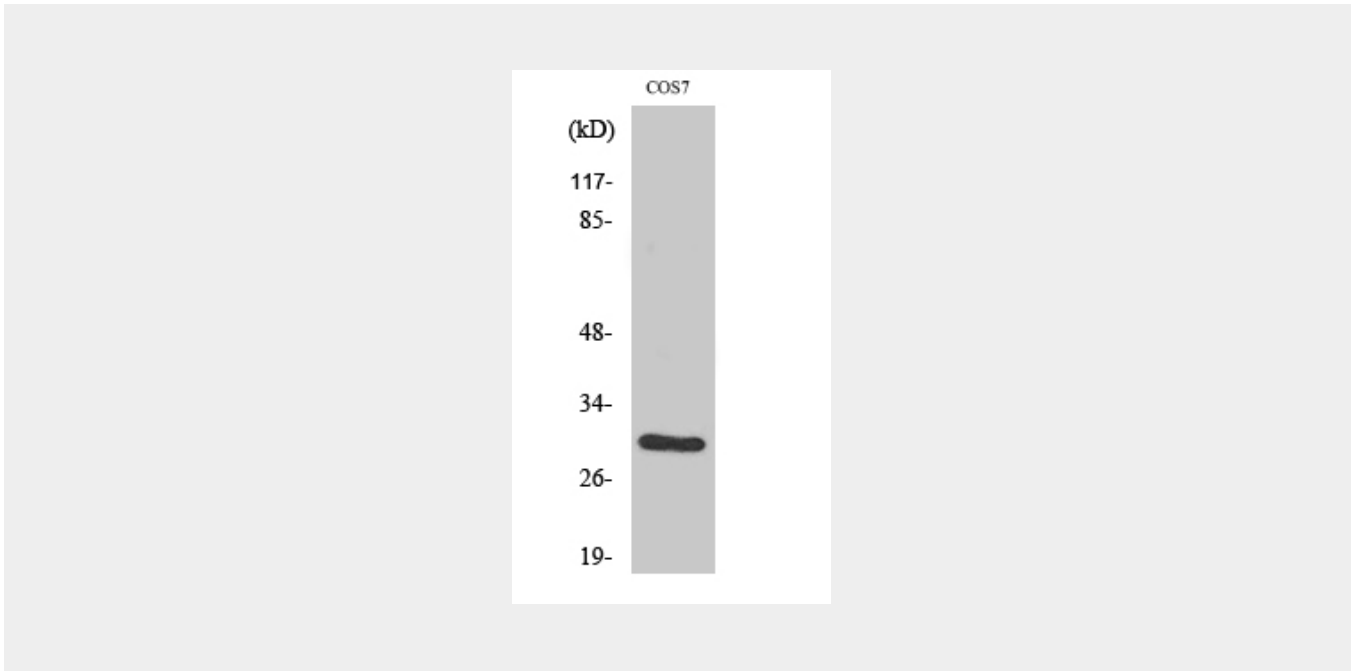
B-cells and in primary carcinomas.

## CD40 Polyclonal Antibody - Protocols

Provided below are standard protocols that you may find useful for product applications.

- [Western Blot](#)
- [Blocking Peptides](#)
- [Dot Blot](#)
- [Immunohistochemistry](#)
- [Immunofluorescence](#)
- [Immunoprecipitation](#)
- [Flow Cytometry](#)
- [Cell Culture](#)

## CD40 Polyclonal Antibody - Images



## CD40 Polyclonal Antibody - Background

Receptor for TNFSF5/CD40LG. Transduces TRAF6- and MAP3K8-mediated signals that activate ERK in macrophages and B cells, leading to induction of immunoglobulin secretion.