

Cdc16 Polyclonal Antibody
Catalog # AP68970**Specification**

Cdc16 Polyclonal Antibody - Product Information

Application	WB, IHC-P
Primary Accession	Q13042
Reactivity	Human, Mouse, Rat
Host	Rabbit
Clonality	Polyclonal

Cdc16 Polyclonal Antibody - Additional Information**Gene ID** 8881**Other Names**

CDC16; ANAPC6; Cell division cycle protein 16 homolog; Anaphase-promoting complex subunit 6; APC6; CDC16 homolog; CDC16Hs; Cyclosome subunit 6

Dilution

WB~~Western Blot: 1/500 - 1/2000. Immunohistochemistry: 1/100 - 1/300. ELISA: 1/20000. Not yet tested in other applications.

IHC-P~~N/A

Format

Liquid in PBS containing 50% glycerol, 0.5% BSA and 0.09% (W/V) sodium azide.

Storage Conditions

-20°C

Cdc16 Polyclonal Antibody - Protein Information**Name** CDC16**Synonyms** ANAPC6**Function**

Component of the anaphase promoting complex/cyclosome (APC/C), a cell cycle-regulated E3 ubiquitin ligase that controls progression through mitosis and the G1 phase of the cell cycle (PubMed:18485873). The APC/C complex acts by mediating ubiquitination and subsequent degradation of target proteins: it mainly mediates the formation of 'Lys-11'-linked polyubiquitin chains and, to a lower extent, the formation of 'Lys-48'- and 'Lys-63'-linked polyubiquitin chains (PubMed:18485873). The APC/C complex catalyzes assembly of branched 'Lys-11'-/'Lys-48'-linked branched ubiquitin chains on target proteins (PubMed:29033132).

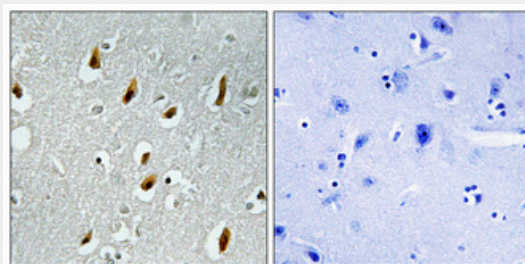
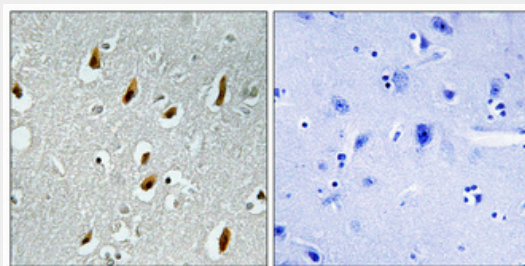
Cellular Location

Cytoplasm, cytoskeleton, microtubule organizing center, centrosome. Cytoplasm, cytoskeleton, spindle. Note=Colocalizes with CDC27 to the centrosome at all stages of the cell cycle and to the mitotic spindle.

Cdc16 Polyclonal Antibody - Protocols

Provided below are standard protocols that you may find useful for product applications.

- [Western Blot](#)
- [Blocking Peptides](#)
- [Dot Blot](#)
- [Immunohistochemistry](#)
- [Immunofluorescence](#)
- [Immunoprecipitation](#)
- [Flow Cytometry](#)
- [Cell Culture](#)

Cdc16 Polyclonal Antibody - Images**Cdc16 Polyclonal Antibody - Background**

Component of the anaphase promoting complex/cyclosome (APC/C), a cell cycle-regulated E3 ubiquitin ligase that controls progression through mitosis and the G1 phase of the cell cycle. The APC/C complex acts by mediating ubiquitination and subsequent degradation of target proteins: it mainly mediates the formation of 'Lys-11'-linked polyubiquitin chains and, to a lower extent, the formation of 'Lys-48'- and 'Lys-63'-linked polyubiquitin chains.