

Cdc37 Polyclonal Antibody
Catalog # AP68988**Specification****Cdc37 Polyclonal Antibody - Product Information**

Application	WB, IHC-P, IF
Primary Accession	Q16543
Reactivity	Human, Mouse, Rat, Monkey
Host	Rabbit
Clonality	Polyclonal

Cdc37 Polyclonal Antibody - Additional Information**Gene ID** 11140**Other Names**

CDC37; CDC37A; Hsp90 co-chaperone Cdc37; Hsp90 chaperone protein kinase-targeting subunit; p50Cdc37

Dilution

WB~~Western Blot: 1/500 - 1/2000. Immunohistochemistry: 1/100 - 1/300. Immunofluorescence: 1/200 - 1/1000. ELISA: 1/20000. Not yet tested in other applications.

IHC-P~~N/A

IF~~1:50~200

Format

Liquid in PBS containing 50% glycerol, 0.5% BSA and 0.09% (W/V) sodium azide.

Storage Conditions

-20°C

Cdc37 Polyclonal Antibody - Protein Information**Name** CDC37**Synonyms** CDC37A**Function**

Co-chaperone that binds to numerous kinases and promotes their interaction with the Hsp90 complex, resulting in stabilization and promotion of their activity (PubMed:8666233). Inhibits HSP90AA1 ATPase activity (PubMed:23569206).

Cellular Location

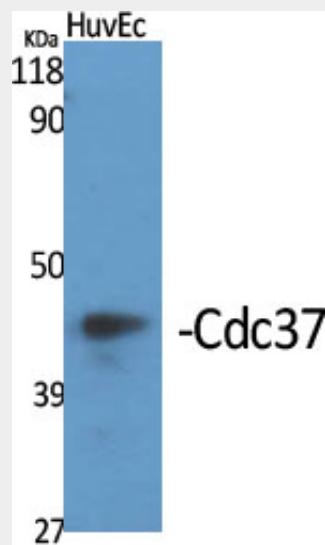
Cytoplasm.

Cdc37 Polyclonal Antibody - Protocols

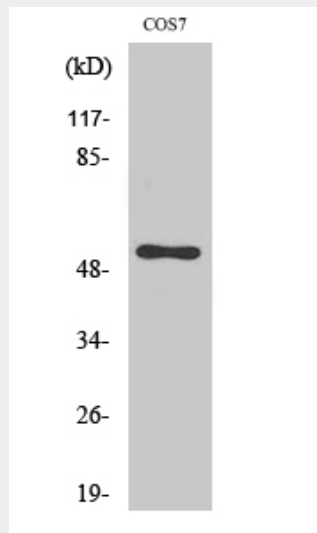
Provided below are standard protocols that you may find useful for product applications.

- [Western Blot](#)
- [Blocking Peptides](#)
- [Dot Blot](#)
- [Immunohistochemistry](#)
- [Immunofluorescence](#)
- [Immunoprecipitation](#)
- [Flow Cytometry](#)
- [Cell Culture](#)

Cdc37 Polyclonal Antibody - Images



Western Blot analysis of various cells using Cdc37 Polyclonal Antibody



Western Blot analysis of MCF7 cells using Cdc37 Polyclonal Antibody

Cdc37 Polyclonal Antibody - Background

Co-chaperone that binds to numerous kinases and promotes their interaction with the Hsp90

complex, resulting in stabilization and promotion of their activity (PubMed:8666233). Inhibits HSP90AA1 ATPase activity (PubMed:23569206).