

Cdc6 Polyclonal Antibody
Catalog # AP69000**Specification**

Cdc6 Polyclonal Antibody - Product Information

Application	WB, IHC-P
Primary Accession	Q99741
Reactivity	Human, Mouse
Host	Rabbit
Clonality	Polyclonal

Cdc6 Polyclonal Antibody - Additional Information**Gene ID** 990**Other Names**

CDC6; CDC18L; Cell division control protein 6 homolog; CDC6-related protein; Cdc18-related protein; HsCdc18; p62(cdc6); HsCDC6

Dilution

WB~~Western Blot: 1/500 - 1/2000. Immunohistochemistry: 1/100 - 1/300. ELISA: 1/5000. Not yet tested in other applications.

IHC-P~~N/A

Format

Liquid in PBS containing 50% glycerol, 0.5% BSA and 0.09% (W/V) sodium azide.

Storage Conditions

-20°C

Cdc6 Polyclonal Antibody - Protein Information**Name** CDC6**Synonyms** CDC18L**Function**

Involved in the initiation of DNA replication. Also participates in checkpoint controls that ensure DNA replication is completed before mitosis is initiated.

Cellular Location

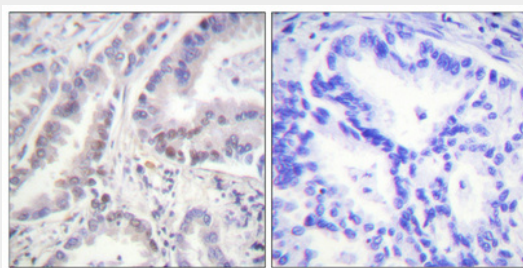
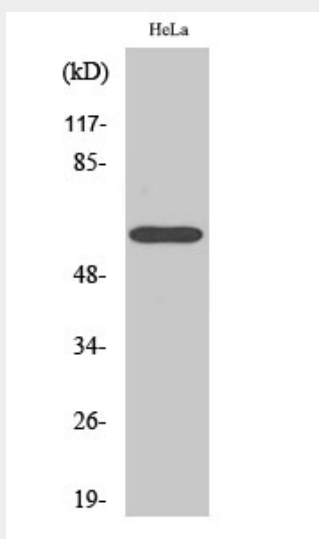
Nucleus. Cytoplasm Note=The protein is nuclear in G1 and cytoplasmic in S-phase cells (PubMed:9566895).

Cdc6 Polyclonal Antibody - Protocols

Provided below are standard protocols that you may find useful for product applications.

- [Western Blot](#)
- [Blocking Peptides](#)
- [Dot Blot](#)
- [Immunohistochemistry](#)
- [Immunofluorescence](#)
- [Immunoprecipitation](#)
- [Flow Cytometry](#)
- [Cell Culture](#)

Cdc6 Polyclonal Antibody - Images



Cdc6 Polyclonal Antibody - Background

Involved in the initiation of DNA replication. Also participates in checkpoint controls that ensure DNA replication is completed before mitosis is initiated.