

CEP70 Polyclonal Antibody
Catalog # AP69047**Specification**

CEP70 Polyclonal Antibody - Product Information

Application	WB, IHC-P
Primary Accession	Q8NHQ1
Reactivity	Human, Monkey
Host	Rabbit
Clonality	Polyclonal

CEP70 Polyclonal Antibody - Additional Information**Gene ID** 80321**Other Names**

CEP70; BITE; Centrosomal protein of 70 kDa; Cep70; p10-binding protein

Dilution

WB~~Western Blot: 1/500 - 1/2000. Immunohistochemistry: 1/100 - 1/300. ELISA: 1/40000. Not yet tested in other applications.

IHC-P~~N/A

Format

Liquid in PBS containing 50% glycerol, 0.5% BSA and 0.09% (W/V) sodium azide.

Storage Conditions

-20°C

CEP70 Polyclonal Antibody - Protein Information**Name** CEP70**Synonyms** BITE**Function**

Plays a role in the organization of both preexisting and nascent microtubules in interphase cells. During mitosis, required for the organization and orientation of the mitotic spindle.

Cellular Location

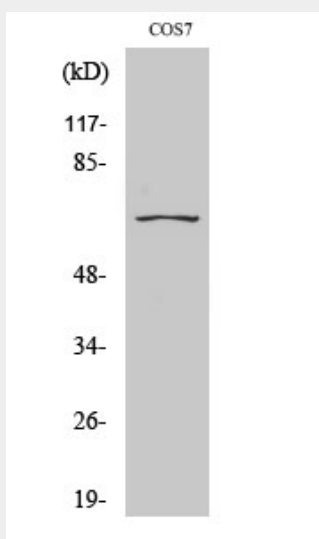
Cytoplasm, cytoskeleton, microtubule organizing center, centrosome. Note=Localized at the center of the radial microtubule array in interphase and at the spindle poles during various stages of mitosis

CEP70 Polyclonal Antibody - Protocols

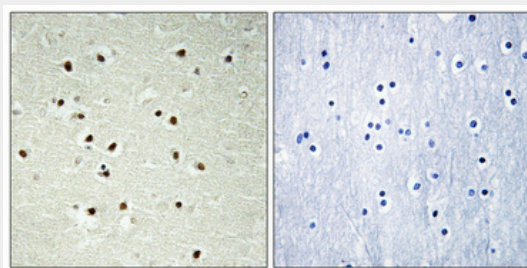
Provided below are standard protocols that you may find useful for product applications.

- [Western Blot](#)
- [Blocking Peptides](#)
- [Dot Blot](#)
- [Immunohistochemistry](#)
- [Immunofluorescence](#)
- [Immunoprecipitation](#)
- [Flow Cytometry](#)
- [Cell Culture](#)

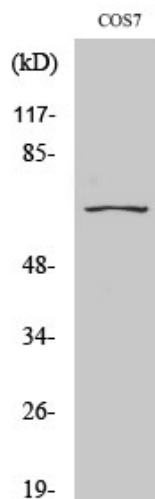
CEP70 Polyclonal Antibody - Images



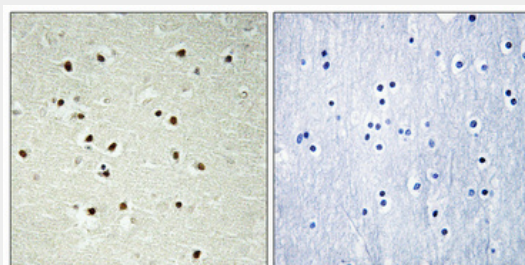
Western Blot analysis of various cells using CEP70 Polyclonal Antibody diluted at 1:2000



Immunohistochemical analysis of paraffin-embedded Human brain. Antibody was diluted at 1:100(4°,overnight). High-pressure and temperature Tris-EDTA,pH8.0 was used for antigen retrieval. Negative contrl (right) obtaned from antibody was pre-absorbed by immunogen peptide.



Western Blot analysis of various cells using CEP70 Polyclonal Antibody diluted at 1:2000



Immunohistochemical analysis of paraffin-embedded Human brain. Antibody was diluted at 1:100(4°,overnight). High-pressure and temperature Tris-EDTA,pH8.0 was used for antigen retrieval. Negative contrl (right) obtained from antibody was pre-absorbed by immunogen peptide.

CEP70 Polyclonal Antibody - Background

Plays a role in the organization of both preexisting and nascent microtubules in interphase cells. During mitosis, required for the organization and orientation of the mitotic spindle.