

Cerebellin 4 Polyclonal Antibody
Catalog # AP69054**Specification**

Cerebellin 4 Polyclonal Antibody - Product Information

Application	WB
Primary Accession	Q9NTU7
Reactivity	Human, Mouse, Monkey
Host	Rabbit
Clonality	Polyclonal

Cerebellin 4 Polyclonal Antibody - Additional Information**Gene ID** 140689**Other Names**

CBLN4; CBLNL1; Cerebellin-4; Cerebellin-like glycoprotein 1

Dilution

WB~~Western Blot: 1/500 - 1/2000. Immunohistochemistry: 1/100 - 1/300. ELISA: 1/40000. Not yet tested in other applications.

Format

Liquid in PBS containing 50% glycerol, 0.5% BSA and 0.09% (W/V) sodium azide.

Storage Conditions

-20°C

Cerebellin 4 Polyclonal Antibody - Protein Information**Name** CBLN4**Synonyms** CBLNL1**Function**

Acts as a synaptic organizer in specific subsets of neurons in the brain (By similarity). Essential for the formation and maintenance of inhibitory GABAergic synapses (By similarity). Promotes the development of dendrite-targeting inhibitory GABAergic synapses made by somatostatin-positive interneurons (By similarity). May contribute to the function of ventral medial habenula region of the brain implicated in the regulation of anxiety-related behaviors (By similarity). May play a role in CBLN3 export from the endoplasmic reticulum and secretion (By similarity).

Cellular Location

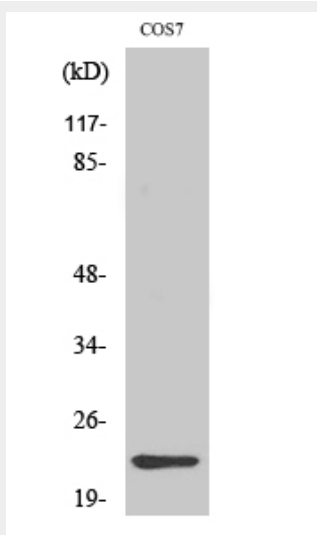
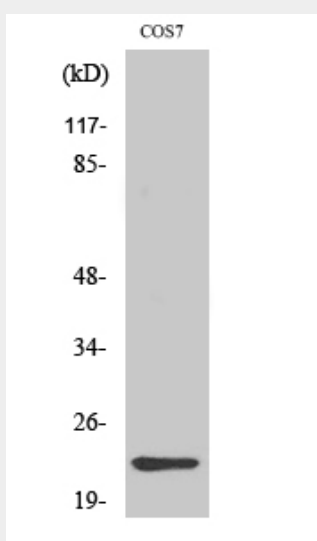
Secreted {ECO:0000250|UniProtKB:Q8BME9}. Synapse {ECO:0000250|UniProtKB:Q8BME9}.
Note=Detected at GABAergic synapses {ECO:0000250|UniProtKB:Q8BME9}

Cerebellin 4 Polyclonal Antibody - Protocols

Provided below are standard protocols that you may find useful for product applications.

- [Western Blot](#)
- [Blocking Peptides](#)
- [Dot Blot](#)
- [Immunohistochemistry](#)
- [Immunofluorescence](#)
- [Immunoprecipitation](#)
- [Flow Cytometry](#)
- [Cell Culture](#)

Cerebellin 4 Polyclonal Antibody - Images



Cerebellin 4 Polyclonal Antibody - Background

May be involved in synaptic functions in the CNS. May play a role in CBLN3 export from the

endoplasmic reticulum and secretion (By similarity).