

CHP2 Polyclonal Antibody
Catalog # AP69098**Specification**

CHP2 Polyclonal Antibody - Product Information

Application	WB
Primary Accession	O43745
Reactivity	Human, Mouse, Rat
Host	Rabbit
Clonality	Polyclonal

CHP2 Polyclonal Antibody - Additional Information**Gene ID** 63928**Other Names**

CHP2; HCA520; Calcineurin B homologous protein 2; Hepatocellular carcinoma-associated antigen 520

Dilution

WB~~Western Blot: 1/500 - 1/2000. ELISA: 1/40000. Not yet tested in other applications.

Format

Liquid in PBS containing 50% glycerol, 0.5% BSA and 0.09% (W/V) sodium azide.

Storage Conditions

-20°C

CHP2 Polyclonal Antibody - Protein Information**Name** CHP2**Synonyms** HCA520**Function**

Functions as an integral cofactor in cell pH regulation by controlling plasma membrane-type Na(+)/H(+) exchange activity. Binds to and activates SLC9A1/NHE1 in a serum-independent manner, thus increasing pH and protecting cells from serum deprivation-induced death. Also plays a role in the regulation of cell proliferation and tumor growth by increasing the phosphatase activity of PPP3CA in a calcium-dependent manner. Activator of the calcineurin/NFAT signaling pathway. Involved in the cytoplasmic translocation of the transcription factor NFATC3 to the nucleus.

Cellular Location

Nucleus. Cytoplasm. Cell membrane. Note=Predominantly localized in a juxtanuclear region. Colocalizes with SLC9A3 in the juxtanuclear region and at the plasma membrane (By similarity). Exported from the nucleus to the cytoplasm through a nuclear export signal (NES) pathway. May shuttle between nucleus and cytoplasm.

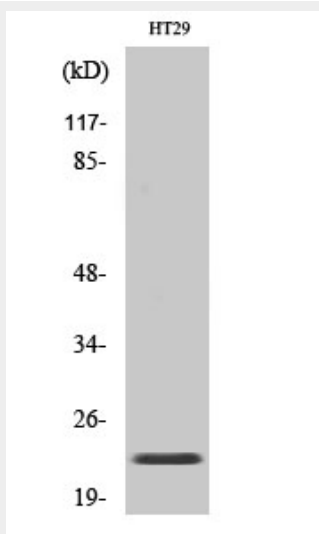
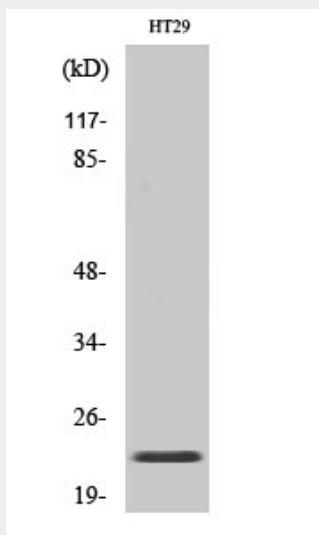
Tissue Location

Expressed in malignantly transformed cells but not detected in normal tissues.

CHP2 Polyclonal Antibody - Protocols

Provided below are standard protocols that you may find useful for product applications.

- [Western Blot](#)
- [Blocking Peptides](#)
- [Dot Blot](#)
- [Immunohistochemistry](#)
- [Immunofluorescence](#)
- [Immunoprecipitation](#)
- [Flow Cytometry](#)
- [Cell Culture](#)

CHP2 Polyclonal Antibody - Images

CHP2 Polyclonal Antibody - Background

Functions as an integral cofactor in cell pH regulation by controlling plasma membrane-type Na(+)/H(+) exchange activity. Binds to and activates SLC9A1/NHE1 in a serum-independent manner, thus increasing pH and protecting cells from serum deprivation- induced death. Also plays a role in the regulation of cell proliferation and tumor growth by increasing the phosphatase activity of PPP3CA in a calcium-dependent manner. Activator of the calcineurin/NFAT signaling pathway. Involved in the cytoplasmic translocation of the transcription factor NFATC3 to the nucleus.