

CHST2 Polyclonal Antibody
Catalog # AP69103**Specification**

CHST2 Polyclonal Antibody - Product Information

Application	WB
Primary Accession	Q9Y4C5
Reactivity	Human
Host	Rabbit
Clonality	Polyclonal

CHST2 Polyclonal Antibody - Additional Information**Gene ID** 9435**Other Names**

CHST2; GN6ST; Carbohydrate sulfotransferase 2;
Galactose/N-acetylglucosamine/N-acetylglucosamine 6-O-sulfotransferase 2; GST-2;
N-acetylglucosamine 6-O-sulfotransferase 1; GlcNAc6ST-1; Gn6ST-1

Dilution

WB~~Western Blot: 1/500 - 1/2000. ELISA: 1/10000. Not yet tested in other applications.

Format

Liquid in PBS containing 50% glycerol, 0.5% BSA and 0.09% (W/V) sodium azide.

Storage Conditions

-20°C

CHST2 Polyclonal Antibody - Protein Information**Name** CHST2**Synonyms** GN6ST**Function**

Sulfotransferase that utilizes 3'-phospho-5'-adenylyl sulfate (PAPS) as sulfonate donor to catalyze the transfer of sulfate to position 6 of non-reducing N-acetylglucosamine (GlcNAc) residues within keratan-like structures on N-linked glycans and within mucin-associated glycans that can ultimately serve as SELL ligands. SELL ligands are present in high endothelial cells (HEVs) and play a central role in lymphocyte homing at sites of inflammation. Participates in biosynthesis of the SELL ligand sialyl 6-sulfo Lewis X and in lymphocyte homing to Peyer patches. Has no activity toward O-linked sugars. Its substrate specificity may be influenced by its subcellular location. Sulfates GlcNAc residues at terminal, non-reducing ends of oligosaccharide chains.

Cellular Location

Golgi apparatus, trans-Golgi network membrane; Single-pass type II membrane protein

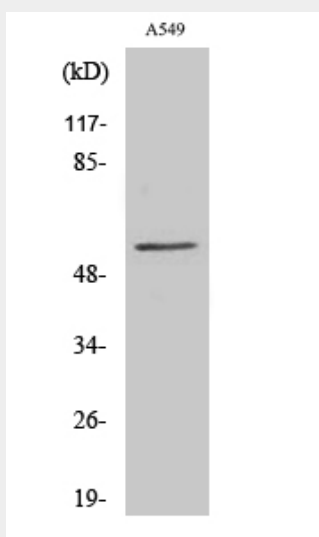
Tissue Location

Widely expressed. Highly expressed in bone marrow, peripheral blood leukocytes, spleen, brain, spinal cord, ovary and placenta. Expressed by high endothelial cells (HEVs) and leukocytes

CHST2 Polyclonal Antibody - Protocols

Provided below are standard protocols that you may find useful for product applications.

- [Western Blot](#)
- [Blocking Peptides](#)
- [Dot Blot](#)
- [Immunohistochemistry](#)
- [Immunofluorescence](#)
- [Immunoprecipitation](#)
- [Flow Cytometry](#)
- [Cell Culture](#)

CHST2 Polyclonal Antibody - Images**CHST2 Polyclonal Antibody - Background**

Sulfotransferase that utilizes 3'-phospho-5'-adenylyl sulfate (PAPS) as sulfonate donor to catalyze the transfer of sulfate to position 6 of non-reducing N-acetylglucosamine (GlcNAc) residues within keratan-like structures on N-linked glycans and within mucin-associated glycans that can ultimately serve as SELL ligands. SELL ligands are present in high endothelial cells (HEVs) and play a central role in lymphocyte homing at sites of inflammation. Participates in biosynthesis of the SELL ligand sialyl 6-sulfo Lewis X and in lymphocyte homing to Peyer patches. Has no activity toward O-linked sugars. Its substrate specificity may be influenced by its subcellular location. Sulfates GlcNAc residues at terminal, non-reducing ends of oligosaccharide chains.