

CIDE-B Polyclonal Antibody
Catalog # AP69111**Specification****CIDE-B Polyclonal Antibody - Product Information**

Application	WB, IHC-P, IF
Primary Accession	Q9UHD4
Reactivity	Human, Mouse
Host	Rabbit
Clonality	Polyclonal

CIDE-B Polyclonal Antibody - Additional Information**Gene ID** 27141**Other Names**

CIDEB; Cell death activator CIDE-B; Cell death-inducing DFFA-like effector B

Dilution

WB~~Western Blot: 1/500 - 1/2000. Immunohistochemistry: 1/100 - 1/300. Immunofluorescence: 1/200 - 1/1000. ELISA: 1/40000. Not yet tested in other applications.

IHC-P~~N/A

IF~~1:50~200

Format

Liquid in PBS containing 50% glycerol, 0.5% BSA and 0.09% (W/V) sodium azide.

Storage Conditions

-20°C

CIDE-B Polyclonal Antibody - Protein Information**Name** CIDEB {ECO:0000303|PubMed:35939579, ECO:0000312|HGNC:HGNC:1977}**Function**

Lipid transferase specifically expressed in hepatocytes, which promotes unilocular lipid droplet formation by mediating lipid droplet fusion (PubMed:35939579). Lipid droplet fusion promotes their enlargement, restricting lipolysis and favoring lipid storage (PubMed:35939579). Localizes on the lipid droplet surface, at focal contact sites between lipid droplets, and mediates atypical lipid droplet fusion by promoting directional net neutral lipid transfer from the smaller to larger lipid droplets (By similarity). The transfer direction may be driven by the internal pressure difference between the contacting lipid droplet pair (By similarity). Promotes lipid exchange and lipid droplet fusion in both small and large lipid droplet- containing hepatocytes (By similarity). In addition to its role in lipid droplet fusion, also involved in cytoplasmic vesicle biogenesis and transport (By similarity). Required for very-low-density lipoprotein (VLDL) lipidation and maturation (By similarity). Probably involved in the biogenesis of VLDL transport vesicles by forming a COPII

vesicle coat and facilitating the formation of endoplasmic reticulum-derived large vesicles (By similarity). Also involved in sterol-regulated export of the SCAP-SREBP complex, composed of SCAP, SREBF1/SREBP1 and SREBF2/SREBP2, by promoting loading of SCAP-SREBP into COPII vesicles (By similarity). May also activate apoptosis (PubMed:10619428).

Cellular Location

Lipid droplet. Endoplasmic reticulum membrane {ECO:0000250|UniProtKB:O70303}; Peripheral membrane protein {ECO:0000250|UniProtKB:O70303}; Cytoplasmic side {ECO:0000250|UniProtKB:O70303}. Golgi apparatus {ECO:0000250|UniProtKB:O70303}. Cytoplasmic vesicle, COPI-coated vesicle {ECO:0000250|UniProtKB:O70303}. Note=Enriched at lipid droplet contact sites. {ECO:0000250|UniProtKB:O70303}

Tissue Location

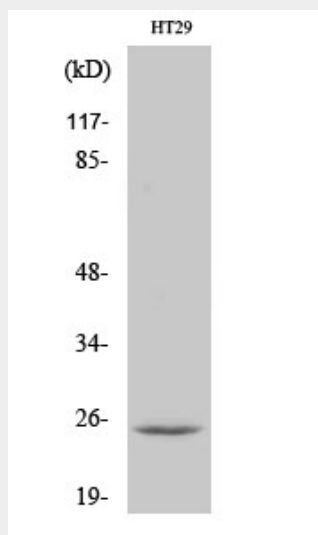
Highly expressed in liver and small intestine and, at lower levels, in colon, kidney and spleen

CIDE-B Polyclonal Antibody - Protocols

Provided below are standard protocols that you may find useful for product applications.

- [Western Blot](#)
- [Blocking Peptides](#)
- [Dot Blot](#)
- [Immunohistochemistry](#)
- [Immunofluorescence](#)
- [Immunoprecipitation](#)
- [Flow Cytometry](#)
- [Cell Culture](#)

CIDE-B Polyclonal Antibody - Images



CIDE-B Polyclonal Antibody - Background

Activates apoptosis.