

**EPS8L3 Antibody (N-term)**  
**Affinity Purified Rabbit Polyclonal Antibody (Pab)**  
**Catalog # AP6911a****Specification**

---

**EPS8L3 Antibody (N-term) - Product Information**

Application	WB, IHC-P, FC,E
Primary Accession	<a href="#">Q8TE67</a>
Other Accession	<a href="#">Q91WL0</a>
Reactivity	Human
Predicted	Mouse
Host	Rabbit
Clonality	Polyclonal
Isotype	Rabbit IgG
Calculated MW	66861
Antigen Region	1-30

**EPS8L3 Antibody (N-term) - Additional Information****Gene ID** 79574**Other Names**

Epidermal growth factor receptor kinase substrate 8-like protein 3, EPS8-like protein 3, Epidermal growth factor receptor pathway substrate 8-related protein 3, EPS8-related protein 3, EPS8L3, EPS8R3

**Target/Specificity**

This EPS8L3 antibody is generated from rabbits immunized with a KLH conjugated synthetic peptide between 1-30 amino acids from the N-terminal region of human EPS8L3.

**Dilution**

WB~~1:1000  
IHC-P~~1:50~100  
FC~~1:10~50

**Format**

Purified polyclonal antibody supplied in PBS with 0.09% (W/V) sodium azide. This antibody is purified through a protein A column, followed by peptide affinity purification.

**Storage**

Maintain refrigerated at 2-8°C for up to 2 weeks. For long term storage store at -20°C in small aliquots to prevent freeze-thaw cycles.

**Precautions**

EPS8L3 Antibody (N-term) is for research use only and not for use in diagnostic or therapeutic procedures.

**EPS8L3 Antibody (N-term) - Protein Information**

**Name** EPS8L3

**Synonyms** EPS8R3

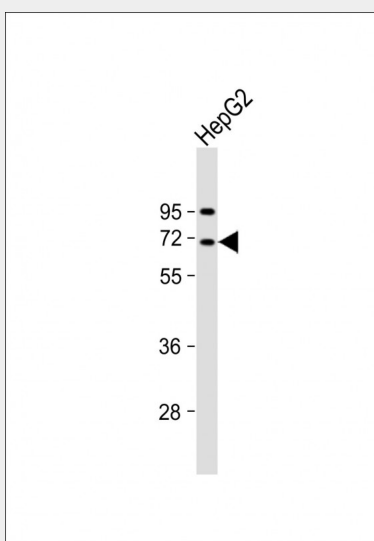
**Cellular Location**  
Cytoplasm.

### EPS8L3 Antibody (N-term) - Protocols

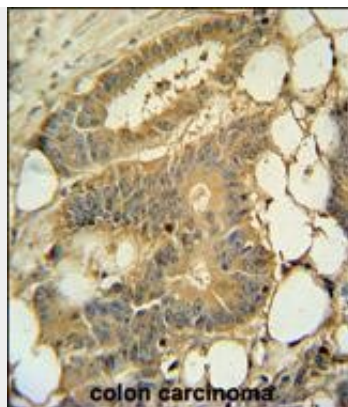
Provided below are standard protocols that you may find useful for product applications.

- [Western Blot](#)
- [Blocking Peptides](#)
- [Dot Blot](#)
- [Immunohistochemistry](#)
- [Immunofluorescence](#)
- [Immunoprecipitation](#)
- [Flow Cytometry](#)
- [Cell Culture](#)

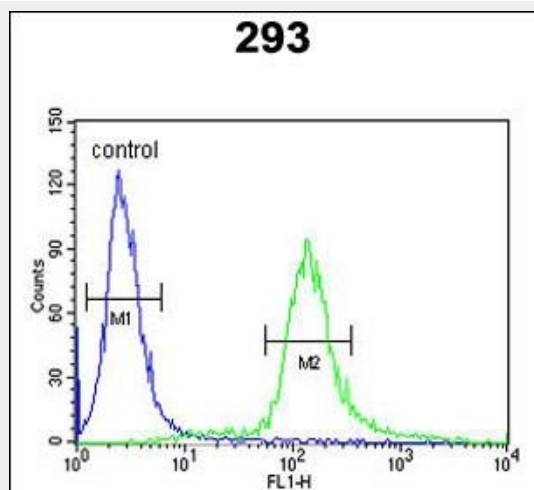
### EPS8L3 Antibody (N-term) - Images



Anti-EPS8L3 Antibody (N-term) at 1:1000 dilution + HepG2 whole cell lysate Lysates/proteins at 20 µg per lane. Secondary Goat Anti-Rabbit IgG, (H+L), Peroxidase conjugated at 1/10000 dilution. Predicted band size : 67 kDa Blocking/Dilution buffer: 5% NFDM/TBST.



EPS8L3 Antibody (N-term) (Cat. #AP6911a) immunohistochemistry analysis in formalin fixed and paraffin embedded human colon carcinoma followed by peroxidase conjugation of the secondary antibody and DAB staining. This data demonstrates the use of the EPS8L3 Antibody (N-term) for immunohistochemistry. Clinical relevance has not been evaluated.



EPS8L3 Antibody (N-term) (Cat. #AP6911a) flow cytometric analysis of 293 cells (right histogram) compared to a negative control cell (left histogram). FITC-conjugated goat-anti-rabbit secondary antibodies were used for the analysis.

#### EPS8L3 Antibody (N-term) - Background

EPS8L3 is related to epidermal growth factor receptor pathway substrate 8 (EPS8), a substrate for the epidermal growth factor receptor. The function of this protein is unknown.

#### EPS8L3 Antibody (N-term) - References

Tocchetti, A., et al., Genomics 81 (2), 234-244 (2003)