

CLC-KA Polyclonal Antibody
Catalog # AP69146**Specification**

CLC-KA Polyclonal Antibody - Product Information

Application	WB
Primary Accession	P51800
Reactivity	Human
Host	Rabbit
Clonality	Polyclonal

CLC-KA Polyclonal Antibody - Additional Information**Gene ID** 1187**Other Names**

CLCNKA; Chloride channel protein CLC-Ka; Chloride channel Ka; CLC-K1

Dilution

WB~~Western Blot: 1/500 - 1/2000. ELISA: 1/40000. Not yet tested in other applications.

Format

Liquid in PBS containing 50% glycerol, 0.5% BSA and 0.09% (W/V) sodium azide.

Storage Conditions

-20°C

CLC-KA Polyclonal Antibody - Protein Information**Name** CLCNKA**Function**

Voltage-gated chloride channel. Chloride channels have several functions including the regulation of cell volume; membrane potential stabilization, signal transduction and transepithelial transport. May be important in urinary concentrating mechanisms.

Cellular Location

Membrane; Multi-pass membrane protein.

Tissue Location

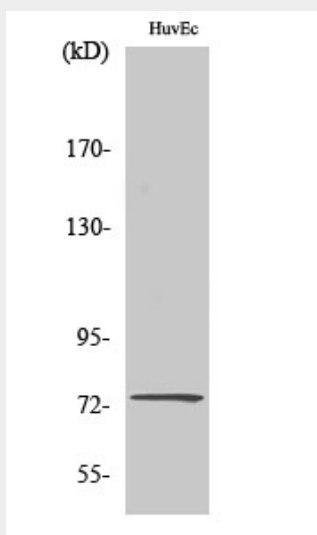
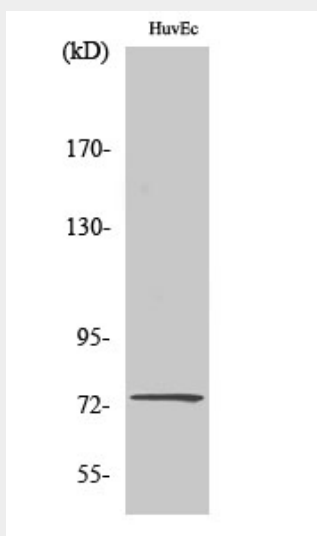
Expressed predominantly in the kidney. All nephron segments expressing BSND also express CLCNK proteins

CLC-KA Polyclonal Antibody - Protocols

Provided below are standard protocols that you may find useful for product applications.

- [Western Blot](#)
- [Blocking Peptides](#)
- [Dot Blot](#)
- [Immunohistochemistry](#)
- [Immunofluorescence](#)
- [Immunoprecipitation](#)
- [Flow Cytometry](#)
- [Cell Culture](#)

CLC-KA Polyclonal Antibody - Images



CLC-KA Polyclonal Antibody - Background

Voltage-gated chloride channel. Chloride channels have several functions including the regulation of cell volume; membrane potential stabilization, signal transduction and transepithelial transport. May be important in urinary concentrating mechanisms.