

CLIP3 Polyclonal Antibody
Catalog # AP69152**Specification**

CLIP3 Polyclonal Antibody - Product Information

Application	WB, IHC-P, IF
Primary Accession	Q96DZ5
Reactivity	Human, Mouse, Rat
Host	Rabbit
Clonality	Polyclonal

CLIP3 Polyclonal Antibody - Additional Information**Gene ID** 25999**Other Names**

CLIP3; CLIPR59; CAP-Gly domain-containing linker protein 3; Cytoplasmic linker protein 170-related 59 kDa protein; CLIP-170-related 59 kDa protein; CLIPR-59

DilutionWB~~Western Blot: 1/500 - 1/2000. Immunohistochemistry: 1/100 - 1/300. Immunofluorescence: 1/200 - 1/1000. ELISA: 1/40000. Not yet tested in other applications.
IHC-P~~N/A
IF~~1:50~200**Format**

Liquid in PBS containing 50% glycerol, 0.5% BSA and 0.09% (W/V) sodium azide.

Storage Conditions

-20°C

CLIP3 Polyclonal Antibody - Protein Information**Name** CLIP3**Synonyms** CLIPR59**Function**

Functions as a cytoplasmic linker protein. Involved in TGN- endosome dynamics. May modulate the cellular compartmentalization of AKT kinase family and promote its cell membrane localization, thereby playing a role in glucose transport in adipocytes.

Cellular Location

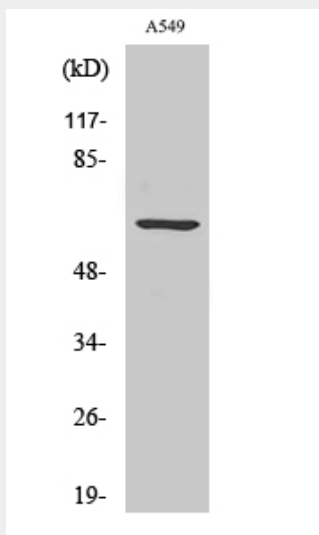
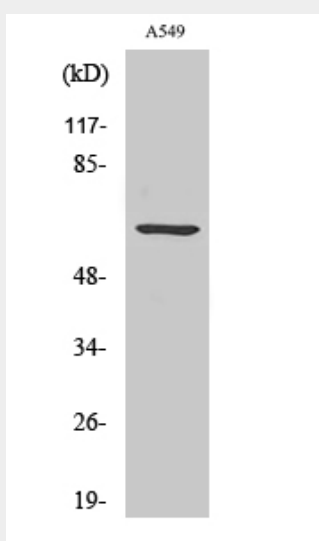
Cell membrane; Lipid-anchor. Cytoplasm. Golgi apparatus, Golgi stack. Note=Localized to Golgi stacks as well as on tubulovesicular elements juxtaposed to Golgi cisternae

CLIP3 Polyclonal Antibody - Protocols

Provided below are standard protocols that you may find useful for product applications.

- [Western Blot](#)
- [Blocking Peptides](#)
- [Dot Blot](#)
- [Immunohistochemistry](#)
- [Immunofluorescence](#)
- [Immunoprecipitation](#)
- [Flow Cytometry](#)
- [Cell Culture](#)

CLIP3 Polyclonal Antibody - Images



CLIP3 Polyclonal Antibody - Background

Functions as a cytoplasmic linker protein. Involved in TGN-endosome dynamics. May modulate the

cellular compartmentalization of AKT kinase family and promote its cell membrane localization, thereby playing a role in glucose transport in adipocytes.