

CLK1 Polyclonal Antibody
Catalog # AP69154**Specification**

CLK1 Polyclonal Antibody - Product Information

Application	WB, IHC-P, IF
Primary Accession	P49759
Reactivity	Human, Mouse
Host	Rabbit
Clonality	Polyclonal

CLK1 Polyclonal Antibody - Additional Information**Gene ID** 1195**Other Names**

CLK1; CLK; Dual specificity protein kinase CLK1; CDC-like kinase 1

Dilution

WB~~Western Blot: 1/500 - 1/2000. Immunohistochemistry: 1/100 - 1/300. Immunofluorescence: 1/200 - 1/1000. ELISA: 1/20000. Not yet tested in other applications.

IHC-P~~N/A

IF~~1:50~200

Format

Liquid in PBS containing 50% glycerol, 0.5% BSA and 0.09% (W/V) sodium azide.

Storage Conditions

-20°C

CLK1 Polyclonal Antibody - Protein Information**Name** CLK1 ([HGNC:2068](#))**Synonyms** CLK**Function**

Dual specificity kinase acting on both serine/threonine and tyrosine-containing substrates. Phosphorylates serine- and arginine- rich (SR) proteins of the spliceosomal complex and may be a constituent of a network of regulatory mechanisms that enable SR proteins to control RNA splicing. Phosphorylates: SRSF1, SRSF3 and PTPN1 (PubMed:10480872, PubMed:19168442). Regulates the alternative splicing of tissue factor (F3) pre-mRNA in endothelial cells (PubMed:19168442).

Cellular Location

Nucleus {ECO:0000250|UniProtKB:P22518}.

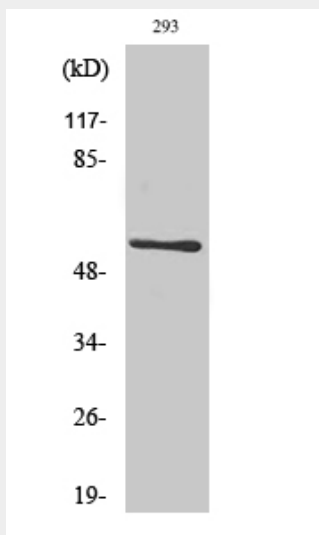
Tissue Location

Endothelial cells..

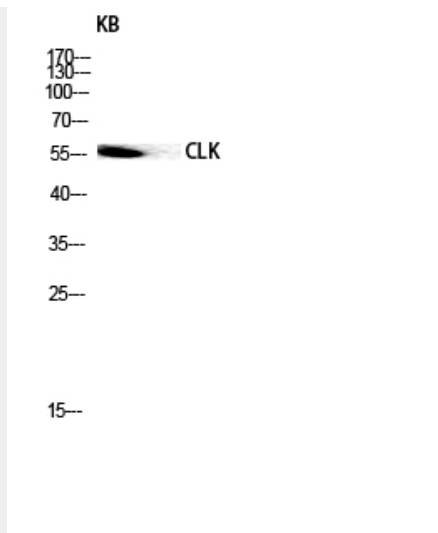
CLK1 Polyclonal Antibody - Protocols

Provided below are standard protocols that you may find useful for product applications.

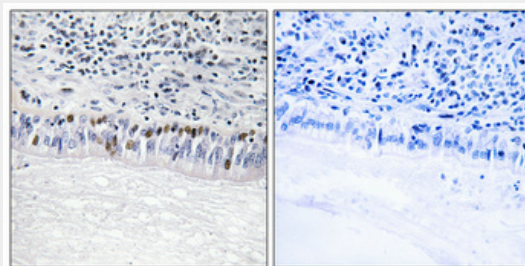
- [Western Blot](#)
- [Blocking Peptides](#)
- [Dot Blot](#)
- [Immunohistochemistry](#)
- [Immunofluorescence](#)
- [Immunoprecipitation](#)
- [Flow Cytometry](#)
- [Cell Culture](#)

CLK1 Polyclonal Antibody - Images

Western Blot analysis of various cells using CLK1 Polyclonal Antibody diluted at 1:500 cells nucleus extracted by Minute TM Cytoplasmic and Nuclear Fractionation kit (SC-003, Invent biotech, MN, USA).



Western blot analysis of KB lysis using CLK1 antibody. Antibody was diluted at 1:500 cells nucleus extracted by Minute TM Cytoplasmic and Nuclear Fractionation kit (SC-003, Invent biotech, MN, USA).



Immunohistochemical analysis of paraffin-embedded Human lung cancer. Antibody was diluted at 1:100 (4°, overnight). High-pressure and temperature Tris-EDTA, pH 8.0 was used for antigen retrieval. Negative control (right) obtained from antibody was pre-absorbed by immunogen peptide.

CLK1 Polyclonal Antibody - Background

Dual specificity kinase acting on both serine/threonine and tyrosine-containing substrates. Phosphorylates serine- and arginine-rich (SR) proteins of the spliceosomal complex and may be a constituent of a network of regulatory mechanisms that enable SR proteins to control RNA splicing. Phosphorylates: SRSF1, SRSF3 and PTPN1. Regulates the alternative splicing of tissue factor (F3) pre-mRNA in endothelial cells and adenovirus E1A pre-mRNA.