

SAR1A Antibody (Center)
Affinity Purified Rabbit Polyclonal Antibody (Pab)
Catalog # AP6915c**Specification**

SAR1A Antibody (Center) - Product Information

Application	WB, IHC-P, FC,E
Primary Accession	Q9NR31
Other Accession	Q52NJ3 , P36536 , Q3T0D7
Reactivity	Human
Predicted	Bovine, Mouse, Pig
Host	Rabbit
Clonality	Polyclonal
Isotype	Rabbit IgG
Calculated MW	22367
Antigen Region	122-149

SAR1A Antibody (Center) - Additional Information**Gene ID** 56681**Other Names**

GTP-binding protein SAR1a, COPII-associated small GTPase, SAR1A, SAR1, SARA, SARA1

Target/Specificity

This SAR1A antibody is generated from rabbits immunized with a KLH conjugated synthetic peptide between 122-149 amino acids from the Central region of human SAR1A.

Dilution

WB~~1:1000
IHC-P~~1:10~50
FC~~1:10~50

Format

Purified polyclonal antibody supplied in PBS with 0.09% (W/V) sodium azide. This antibody is purified through a protein A column, followed by peptide affinity purification.

Storage

Maintain refrigerated at 2-8°C for up to 2 weeks. For long term storage store at -20°C in small aliquots to prevent freeze-thaw cycles.

Precautions

SAR1A Antibody (Center) is for research use only and not for use in diagnostic or therapeutic procedures.

SAR1A Antibody (Center) - Protein Information**Name** SAR1A

Synonyms SAR1, SARA, SARA1

Function Involved in transport from the endoplasmic reticulum to the Golgi apparatus (By similarity). Required to maintain SEC16A localization at discrete locations on the ER membrane perhaps by preventing its dissociation. SAR1A-GTP-dependent assembly of SEC16A on the ER membrane forms an organized scaffold defining endoplasmic reticulum exit sites (ERES).

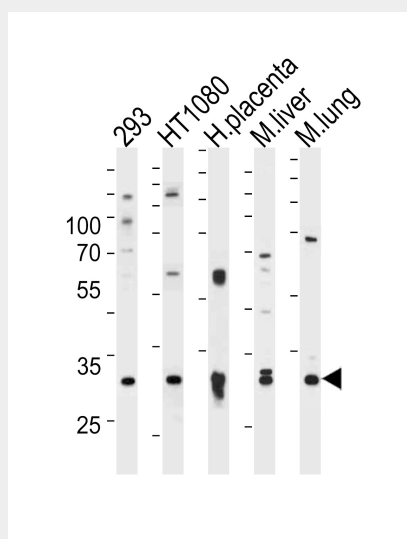
Cellular Location

Endoplasmic reticulum. Golgi apparatus

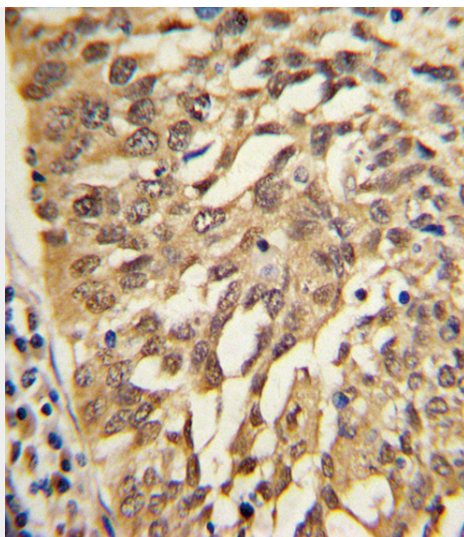
SAR1A Antibody (Center) - Protocols

Provided below are standard protocols that you may find useful for product applications.

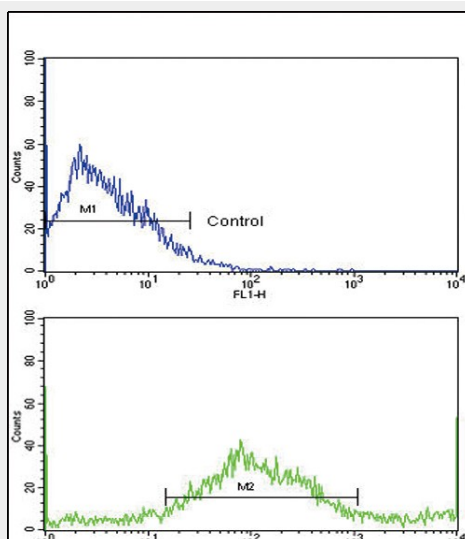
- [Western Blot](#)
- [Blocking Peptides](#)
- [Dot Blot](#)
- [Immunohistochemistry](#)
- [Immunofluorescence](#)
- [Immunoprecipitation](#)
- [Flow Cytometry](#)
- [Cell Culture](#)

SAR1A Antibody (Center) - Images

Western blot analysis of lysates from 293, HT1080 cell line, human placenta, mouse liver and lung tissue (from left to right), using SAR1A Antibody (Center) (Cat. #AP6915c). AP6915c was diluted at 1:1000 at each lane. A goat anti-rabbit IgG H&L (HRP) at 1:5000 dilution was used as the secondary antibody. Lysates at 35ug per lane.



Formalin-fixed and paraffin-embedded human lung carcinoma with SAR1A Antibody (Center), which was peroxidase-conjugated to the secondary antibody, followed by DAB staining. This data demonstrates the use of this antibody for immunohistochemistry; clinical relevance has not been evaluated.



Flow cytometric analysis of NCI-H292 cells using SAR1A Antibody (Center)(bottom histogram) compared to a negative control cell (top histogram). FITC-conjugated goat-anti-rabbit secondary antibodies were used for the analysis.

SAR1A Antibody (Center) - Background

SAR1A is involved in transport from the endoplasmic reticulum to the Golgi apparatus (By similarity) and required to maintain SEC16A localization at discrete locations on the ER membrane perhaps by preventing its dissociation. SAR1A-GTP-dependent assembly of SEC16A on the ER membrane forms an organized scaffold defining endoplasmic reticulum exit sites (ERES).

SAR1A Antibody (Center) - References

Morgan,A.R., et.al., Am. J. Med. Genet. B Neuropsychiatr. Genet. 144B (6), 762-770(2007)