

**TGM4 Antibody (Center)**  
**Affinity Purified Rabbit Polyclonal Antibody (Pab)**  
**Catalog # AP6918c**

**Specification**

---

**TGM4 Antibody (Center) - Product Information**

Application	WB, FC, IHC-P,E
Primary Accession	<a href="#">P49221</a>
Reactivity	Human, Mouse
Host	Rabbit
Clonality	Polyclonal
Isotype	Rabbit IgG
Calculated MW	77145
Antigen Region	135-164

**TGM4 Antibody (Center) - Additional Information**

**Gene ID** 7047

**Other Names**

Protein-glutamine gamma-glutamyltransferase 4, Fibrinolytic, Prostate transglutaminase, Prostate-specific transglutaminase, Transglutaminase P, TG(P), TGP, TGase P, Transglutaminase-4, TGase-4, TGM4

**Target/Specificity**

This TGM4 antibody is generated from rabbits immunized with a KLH conjugated synthetic peptide between 135-164 amino acids from the Central region of human TGM4.

**Dilution**

WB~~1:1000-1:2000

FC~~1:10~50

IHC-P~~1:50~100

E~~Use at an assay dependent concentration.

**Format**

Purified polyclonal antibody supplied in PBS with 0.09% (W/V) sodium azide. This antibody is purified through a protein A column, followed by peptide affinity purification.

**Storage**

Maintain refrigerated at 2-8°C for up to 2 weeks. For long term storage store at -20°C in small aliquots to prevent freeze-thaw cycles.

**Precautions**

TGM4 Antibody (Center) is for research use only and not for use in diagnostic or therapeutic procedures.

**TGM4 Antibody (Center) - Protein Information**

## Name TGM4

**Function** Associated with the mammalian reproductive process. Catalyzes the cross-linking of proteins and the conjugation of polyamines to specific proteins in the seminal tract.

## Tissue Location

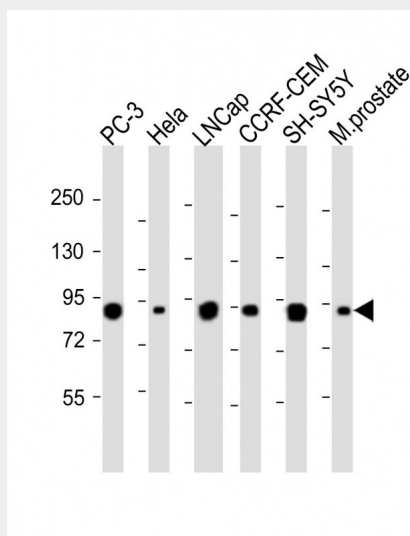
Prostate.

## TGM4 Antibody (Center) - Protocols

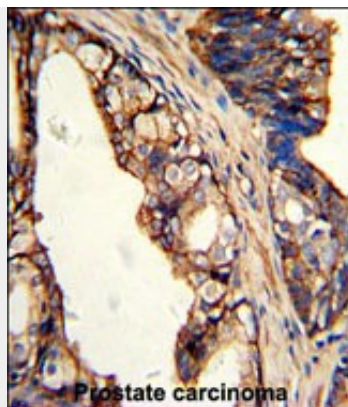
Provided below are standard protocols that you may find useful for product applications.

- [Western Blot](#)
- [Blocking Peptides](#)
- [Dot Blot](#)
- [Immunohistochemistry](#)
- [Immunofluorescence](#)
- [Immunoprecipitation](#)
- [Flow Cytometry](#)
- [Cell Culture](#)

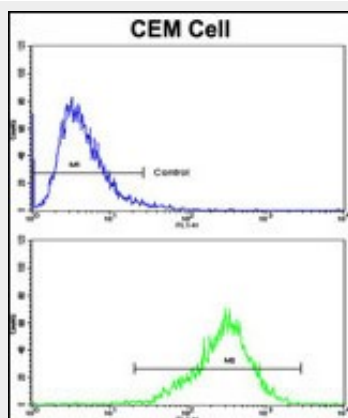
## TGM4 Antibody (Center) - Images



All lanes : Anti-TGM4 Antibody (Center) at 1:1000-1:2000 dilution Lane 1: PC-3 whole cell lysate Lane 2: HeLa whole cell lysate Lane 3: LNCap whole cell lysate Lane 4: CCRF-CEM whole cell lysate Lane 5: SH-SY5Y whole cell lysate Lane 6: Mouse prostate whole tissue lysate Lysates/proteins at 20 µg per lane. Secondary Goat Anti-Rabbit IgG, (H+L), Peroxidase conjugated at 1/10000 dilution. Predicted band size : 77 kDa Blocking/Dilution buffer: 5% NFDM/TBST.



Formalin-fixed and paraffin-embedded human prostate carcinoma with TGM4 Antibody (Center), which was peroxidase-conjugated to the secondary antibody, followed by DAB staining. This data demonstrates the use of this antibody for immunohistochemistry; clinical relevance has not been evaluated.



Flow cytometric analysis of CEM cells using TGM4 Antibody (Center)(bottom histogram) compared to a negative control cell (top histogram). FITC-conjugated goat-anti-rabbit secondary antibodies were used for the analysis.

#### **TGM4 Antibody (Center) - Background**

TGM4 is associated with the mammalian reproductive process and catalyzes the cross-linking of proteins and the conjugation of polyamines to specific proteins in the seminal tract.

#### **TGM4 Antibody (Center) - References**

Jiang, W.G., et.al., Microvasc. Res. 77 (2), 150-157 (2009)