

**Connexin 47 Polyclonal Antibody**  
**Catalog # AP69232****Specification**

---

**Connexin 47 Polyclonal Antibody - Product Information**

|                   |                        |
|-------------------|------------------------|
| Application       | WB, IF                 |
| Primary Accession | <a href="#">Q5T442</a> |
| Reactivity        | Human                  |
| Host              | Rabbit                 |
| Clonality         | Polyclonal             |

**Connexin 47 Polyclonal Antibody - Additional Information****Gene ID** 57165**Other Names**

GJC2; GJA12; Gap junction gamma-2 protein; Connexin-46.6; Cx46.6; Connexin-47; Cx47; Gap junction alpha-12 protein

**Dilution**

WB~~Western Blot: 1/500 - 1/2000. Immunofluorescence: 1/200 - 1/1000. ELISA: 1/10000. Not yet tested in other applications.

IF~~1:50~200

**Format**

Liquid in PBS containing 50% glycerol, 0.5% BSA and 0.09% (W/V) sodium azide.

**Storage Conditions**

-20°C

**Connexin 47 Polyclonal Antibody - Protein Information****Name** GJC2**Synonyms** GJA12**Function**

One gap junction consists of a cluster of closely packed pairs of transmembrane channels, the connexons, through which materials of low MW diffuse from one cell to a neighboring cell. May play a role in myelination in central and peripheral nervous systems.

**Cellular Location**

Cell membrane; Multi-pass membrane protein. Cell junction, gap junction

**Tissue Location**

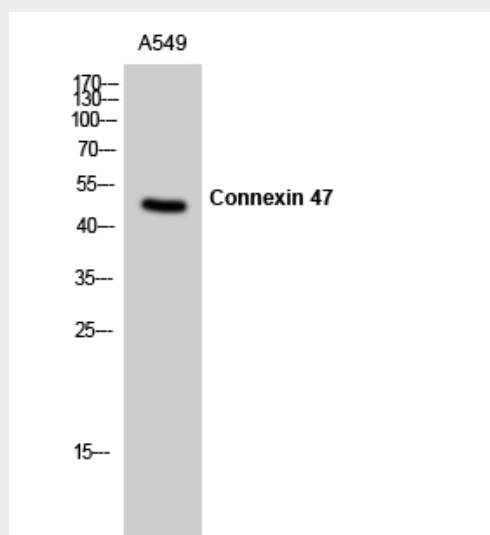
Expressed in central nervous system, in sciatic nerve and sural nerve. Also detected in skeletal muscles

## Connexin 47 Polyclonal Antibody - Protocols

Provided below are standard protocols that you may find useful for product applications.

- [Western Blot](#)
- [Blocking Peptides](#)
- [Dot Blot](#)
- [Immunohistochemistry](#)
- [Immunofluorescence](#)
- [Immunoprecipitation](#)
- [Flow Cytometry](#)
- [Cell Culture](#)

## Connexin 47 Polyclonal Antibody - Images



Western Blot analysis of A549 cells using Connexin 47 Polyclonal Antibody

## Connexin 47 Polyclonal Antibody - Background

One gap junction consists of a cluster of closely packed pairs of transmembrane channels, the connexons, through which materials of low MW diffuse from one cell to a neighboring cell. May play a role in myelination in central and peripheral nervous systems.