

Coronin 1A Polyclonal Antibody
Catalog # AP69244**Specification**

Coronin 1A Polyclonal Antibody - Product Information

Application	WB, IHC-P
Primary Accession	P31146
Reactivity	Human, Mouse, Rat
Host	Rabbit
Clonality	Polyclonal

Coronin 1A Polyclonal Antibody - Additional Information**Gene ID** 11151**Other Names**

CORO1A; CORO1; Coronin-1A; Coronin-like protein A; Clipin-A; Coronin-like protein p57; Tryptophan aspartate-containing coat protein; TACO

Dilution

WB~~Western Blot: 1/500 - 1/2000. Immunohistochemistry: 1/100 - 1/300. ELISA: 1/40000. Not yet tested in other applications.

IHC-P~~N/A

Format

Liquid in PBS containing 50% glycerol, 0.5% BSA and 0.09% (W/V) sodium azide.

Storage Conditions

-20°C

Coronin 1A Polyclonal Antibody - Protein Information**Name** CORO1A**Synonyms** CORO1**Function**

May be a crucial component of the cytoskeleton of highly motile cells, functioning both in the invagination of large pieces of plasma membrane, as well as in forming protrusions of the plasma membrane involved in cell locomotion. In mycobacteria-infected cells, its retention on the phagosomal membrane prevents fusion between phagosomes and lysosomes.

Cellular Location

Cytoplasm, cytoskeleton. Cytoplasm, cell cortex. Cytoplasmic vesicle, phagosome membrane. Note=In non-infected macrophages, associated with the cortical microtubule network. In mycobacteria-infected macrophages, becomes progressively relocalized and retained around the mycobacterial phagosomes. Retention on the phagosomal membrane is strictly dependent on mycobacterial viability and not due to impaired acidification (By similarity).

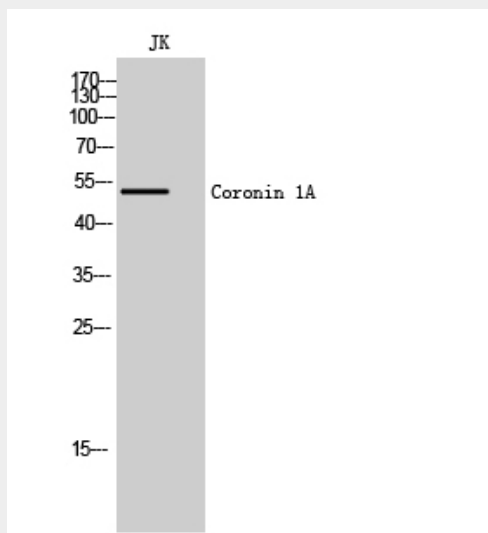
Tissue Location

Expressed in brain, thymus, spleen, bone marrow and lymph node. Low in lung and gut

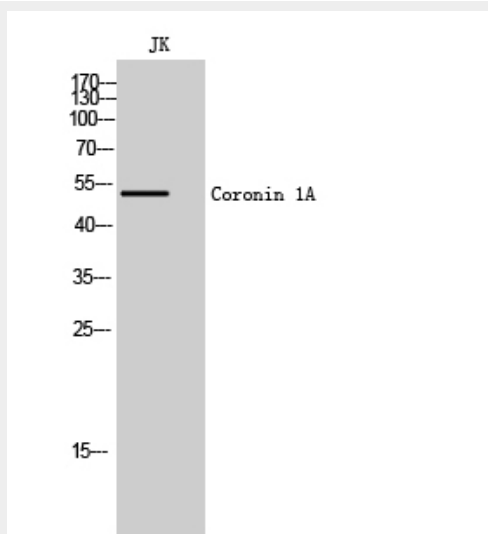
Coronin 1A Polyclonal Antibody - Protocols

Provided below are standard protocols that you may find useful for product applications.

- [Western Blot](#)
- [Blocking Peptides](#)
- [Dot Blot](#)
- [Immunohistochemistry](#)
- [Immunofluorescence](#)
- [Immunoprecipitation](#)
- [Flow Cytometry](#)
- [Cell Culture](#)

Coronin 1A Polyclonal Antibody - Images

Western Blot analysis of JK cells using Coronin 1A Polyclonal Antibody



Western Blot analysis of JK cells using Coronin 1A Polyclonal Antibody

Coronin 1A Polyclonal Antibody - Background

May be a crucial component of the cytoskeleton of highly motile cells, functioning both in the invagination of large pieces of plasma membrane, as well as in forming protrusions of the plasma membrane involved in cell locomotion. In mycobacteria- infected cells, its retention on the phagosomal membrane prevents fusion between phagosomes and lysosomes.